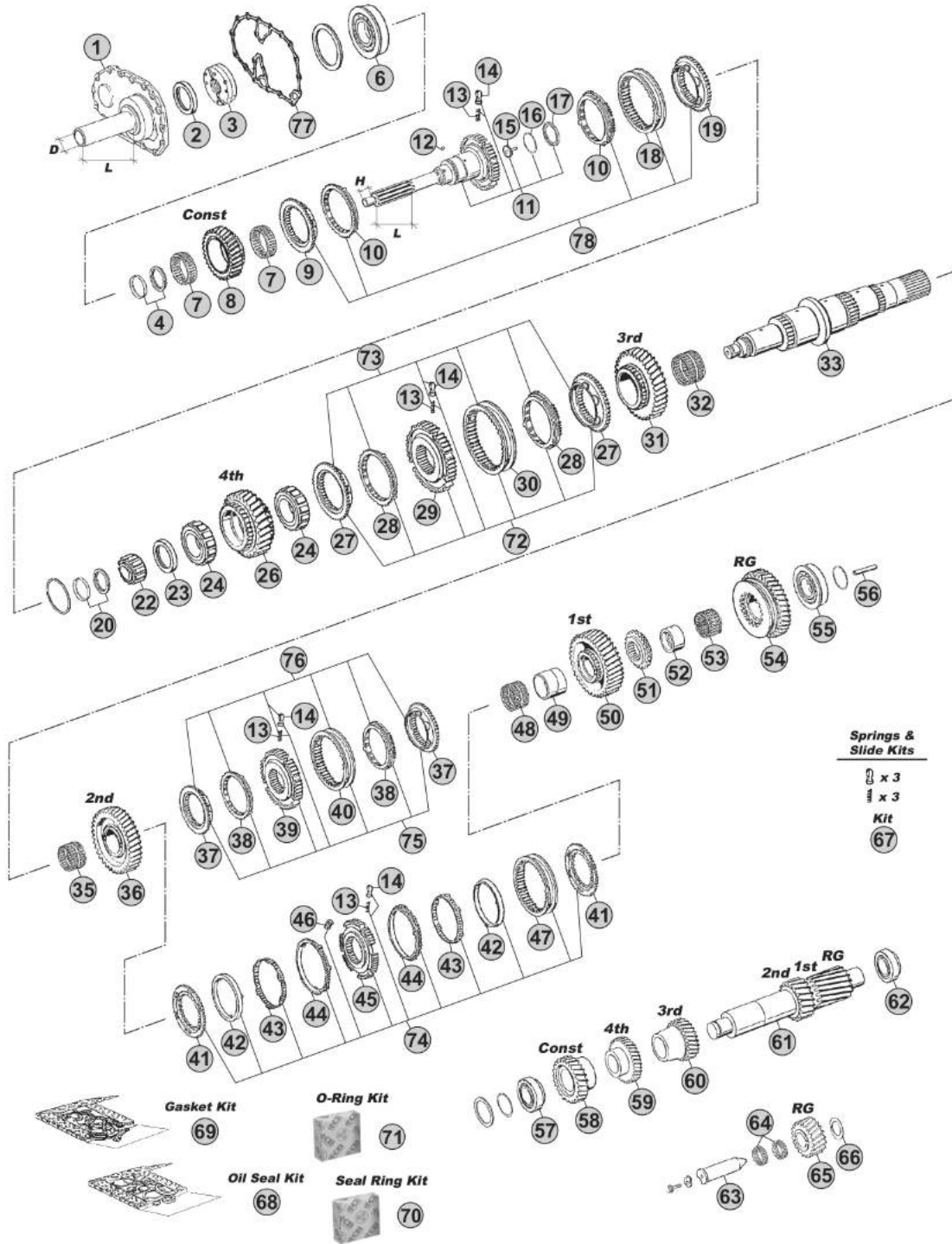


MODELS:

- ECOSPLIT I-II

VERSIONS:

- 16S150 (1313 xxx xxx)



Notes

(B) R. 13,80-0,84

(C) R. 16,47-1,00

Our spare parts are not the originals but interchangeable with the originals ones. All original equipment manufacturers' numbers, pictures and models used in this catalogue are for reference only. Our products bear our trade-mark.

Our spare parts are not the originals but interchangeable with the originals ones. All original equipment manufacturers' numbers, pictures and models used in this catalogue are for reference only. Our products bear our trade-mark.

Fig.	CEI no.	ZF no.	Description	Q.ty	Notes	165150				
1	128.346	1312 302 036	Front Cover	1	L=170 -D=60	●				
1	128.347	1312 302 096	Front Cover	1	L=147-D=60	●				
1	128.371	1312 302 054	Front Cover	1		●				
2	139.879	0734 310 387	Oil Seal 55x75x8	1		●				
2	239.003	0634 100 182	Oil Seal	1	(13)	●				
3	280.348	1295 202 041	Oil Pump	1		●				
4	298.408	1499 298 136	Shims Kit Th. 4,35mm	1		●				
4	298.409	1499 298 135	Shims Kit Th. 4,30mm	1		●				
4	298.410	1499 298 134	Shims Kit Th. 4,25mm	1		●				
4	298.411	1499 298 133	Shims Kit Th. 4,20mm	1		●				
4	298.412	1499 298 132	Shims Kit Th. 4,15mm	1		●				
4	298.413	1499 298 131	Shims Kit Th. 4,10mm	1		●				
4	298.419	1499 298 130	Shims Kit Th. 4,05mm	1		●				
4	298.420	1499 298 129	Shims Kit Th.4,00 mm	1		●				
4	298.421	1499 298 128	Shims Kit Th.3,95 mm	1		●				
4	298.422	1499 298 127	Shims Kit Th.3,90 mm	1		●				
4	298.423	1499 298 126	Shims Kit Th.3,85 mm	1		●				
4	298.424	1499 298 125	Shims Kit Th.3,80 mm	1		●				
6	130.306	0750 117 431	Bearing 75x150x30,50	1		●				
7	137.148	0750 115 310	Needle Cage D.93x101x25	2		●				
8	145.557	1313 302 036	Constant Gear 34 T	1	B	●				
8	145.525	1313 302 035	Constant Gear 30 T	1	C	●				
9	109.134	1312 304 027	Synchronizer Cone	1		●				
10	119.119	1297 304 402	Synchronizer Ring	2	Old Type	●				
10	119.167	1297 304 484	Synchronizer Ring	2	New Type	●				
11	102.234	1313 202 013	Input Shaft	1	L=115 H=32	●				
11	102.590	1313 202 016	Input Shaft	1		●				
11	102.591	1313 221 004	Input Shaft	1	NMV130 (Clutch PTO)	●				
11	102.241	1313 202 015	Input Shaft	1		●				
11		1313 202 017	Input Shaft	1		●				
12	171.084	0635 470 012	Needle D.7x7	1		●				
13	156.140	0732 040 409	Spring De.6,5x23,50	3	3x3 pcs.	●				
14	160.189	1297 304 436	Pressure Piece	3	3x3 pcs.	●				
15	189.630	1315 302 196	Tube	1		●				
16	189.631	0630 502 027	Ring	1		●				
17	189.632	0501 314 060	Diaphragm	1		●				
18	154.135	1310 304 202	Sliding Sleeve	1		●				
19	109.133	1312 304 056	Synchronizer Cone	1		●				
20	298.392	1499 298 027	Shims Kit Th=5,00mm	1		●				
20	298.393	1499 298 026	Shims Kit Th=4,90mm	1		●				
20	298.394	1499 298 025	Shims Kit Th=4,80mm	1		●				
20	298.395	1499 298 024	Shims Kit Th=4,70mm	1		●				
20	298.396	1499 298 023	Shims Kit Th=4,60mm	1		●				

ECOSPLIT I-II
16S150

Date

09/2014

Notes

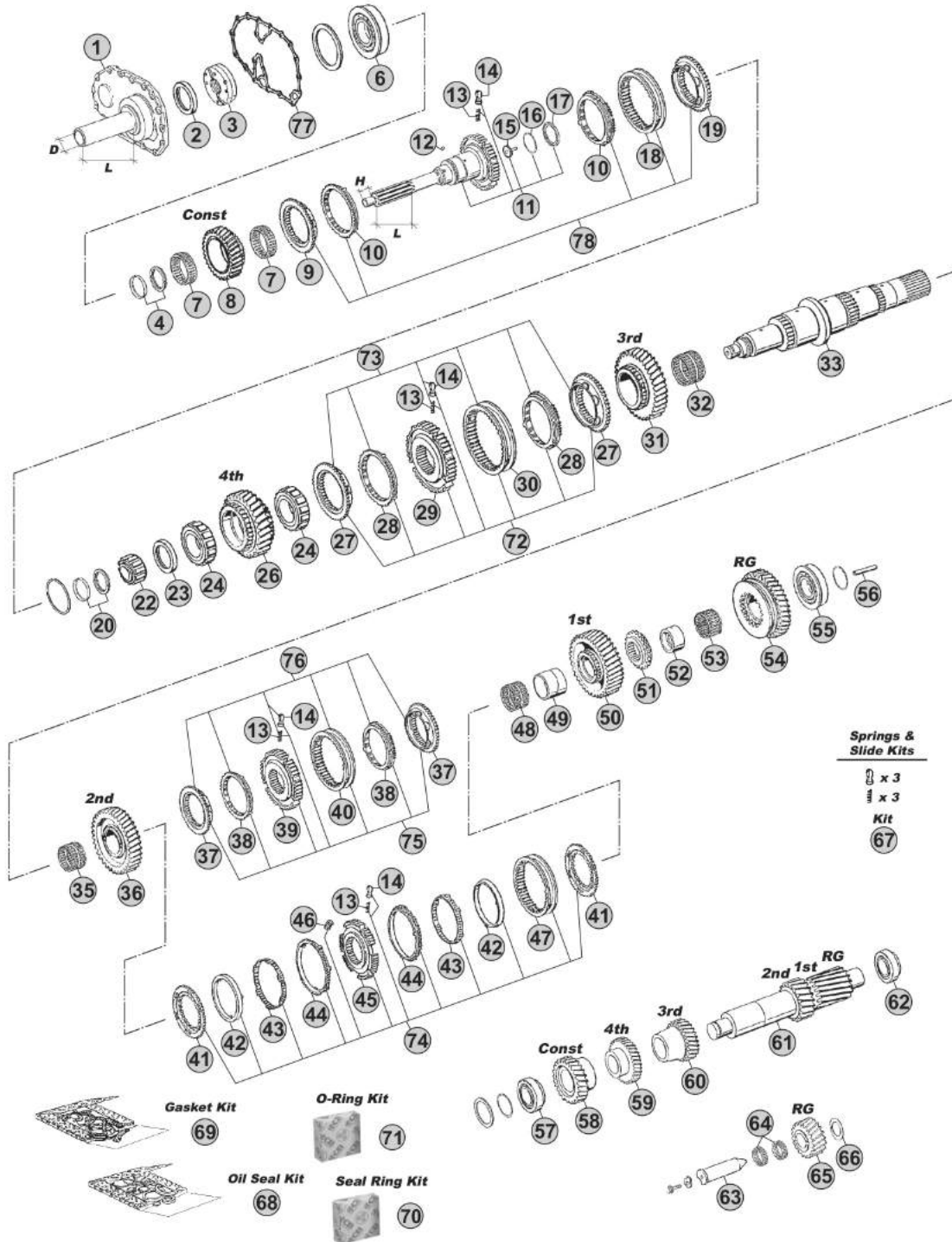
(13) For Input shaft 1313 221 004

MODELS:

- ECOSPLIT I-II

VERSIONS:

- 16S150 (1313 xxx xxx)



Notes

(B) R. 13,80-0,84

(C) R. 16,47-1,00

Our spare parts are not the originals but interchangeable with the originals ones. All original equipment manufacturers' numbers, pictures and models used in this catalogue are for reference only. Our products bear our trade-mark.

Our spare parts are not the originals but interchangeable with the originals ones. All original equipment manufacturers' numbers, pictures and models used in this catalogue are for reference only. Our products bear our trade-mark.

Fig.	CEI no.	ZF no.	Description	Q.ty	Notes	16S150			
22	137.150	0750 117 232	Roller Bearing 42x40,30	1		●			
23	111.445	1315 304 051	Ring	1	S.8,30 mm	●			
24	137.156	0750 118 198	Roller Cage 67x101x32	2		●			
26	146.476	1313 304 005	Gear 4th Speed 30 T	1	B	●			
26	146.442	1296 304 131	Gear 4th Speed 34 T	1	C	●			
27	109.134	1312 304 027	Synchronizer Cone	2	(20)	●			
27	109.385	1316 304 159	Synchronizer Cone	2	(21)	●			
27	109.839	1316 304 190	Synchronizer Cone	2	(22)	●			
27	109.208	1356 304 025	Synchronizer Cone	2	(23)	●			
28	119.119	1297 304 402	Synchronizer Ring	2	(20) Old Type	●			
28	119.167	1297 304 484	Synchronizer Ring	2	(20) New Type	●			
28	119.217	1316 304 168	Synchronizer Ring	2	(21)	●			
28	119.308	1316 304 189	Synchronizer Ring	2	(22)	●			
28	119.327	1316 304 196	Synchronizer Ring	2	(23)	●			
29	157.180	1312 304 052	Synchronizer Hub	1	(20)	●			
29	157.227	1316 304 162	Synchronizer Hub	1	(21)	●			
29	155.291	1356 304 019	Synchronizer Hub	1	(22-23)	●			
30	154.135	1310 304 202	Sliding Sleeve	1	(20)	●			
30	154.357	1316 304 167	Sliding Sleeve	1	(21)	●			
30	154.482	1356 304 023	Sliding Sleeve	1	(22-23)	●			
31	145.496	1313 304 080	Gear 3rd Speed 32 T	1	B	●			
31	145.526	1313 304 081	Gear 3rd Speed 34 T	1	C	●			
32	137.137	0735 321 087	Needle Cage 92x100x53	1		●			
33	103.135	1315 304 130	Main Shaft	1		●			
35	137.137	0735 321 087	Needle Cage 92x100x53	1		●			
36	145.502	1313 304 078	Gear 2nd Speed 37 T	1	B	●			
36	145.527	1313 304 077	Gear 2nd Speed 38 T	1	C	●			
37	109.132	1313 304 009	Synchronizer Cone	2	(31)	●			
37	109.386	1316 304 156	Synchronizer Cone	2	(32-33)	●			
37	109.824	1356 304 026	Synchronizer Cone	2	(34)	●			
38	119.122	1297 304 401	Synchronizer Ring	2	(31) Old Type	●			
38	119.166	1297 304 485	Synchronizer Ring	2	(31) New Type	●			
38	119.218	1316 304 170	Synchronizer Ring	2	(32-33)	●			
38	119.302	1316 304 173	Synchronizer Ring	2	(34)	●			
39	157.189	1313 304 008	Synchronizer Hub	1	(31)	●			
39	157.228	1316 304 163	Synchronizer Hub	1	(32)	●			
39	155.290	1356 304 022	Synchronizer Hub	1	(33-34)	●			
40	154.202	1316 304 078	Sliding Sleeve	1	(31)	●			
40	154.358	1316 304 169	Sliding Sleeve	1	(32)	●			
40	154.456	1356 304 024	Sliding Sleeve	1	(33-34)	●			
41	109.176	1312 304 106	Synchronizer Cone	2	(30)	●			
42	119.152	1268 304 424	Intermediate Synchro Ring	2	(30)	●			
43	119.153	1268 304 494	Intermediate Synchro Ring	2	(30)	●			

Date

09/2014

Notes

(20) Only for 3rd/4th Speed - First version - Do not mix

(21) Only for 3rd/4th Speed - Second version - Do not mix

(22) Only for 3rd/4th Speed - Latest type - Do not mix

(23) Only for 3rd/4th Speed - Latest type - Do not mix - Carbon version

(31) Only for 1st/2nd speed - First version (single cone) - Do not mix

(32) Only for 1st/2nd speed - Second version (Single cone) - Do not mix

(33) Only for 1st/2nd speed - Latest type (single cone) - Do not mix

(34) Only for 1st/2nd speed - Latest type (single cone) - Do not mix - Carbon version

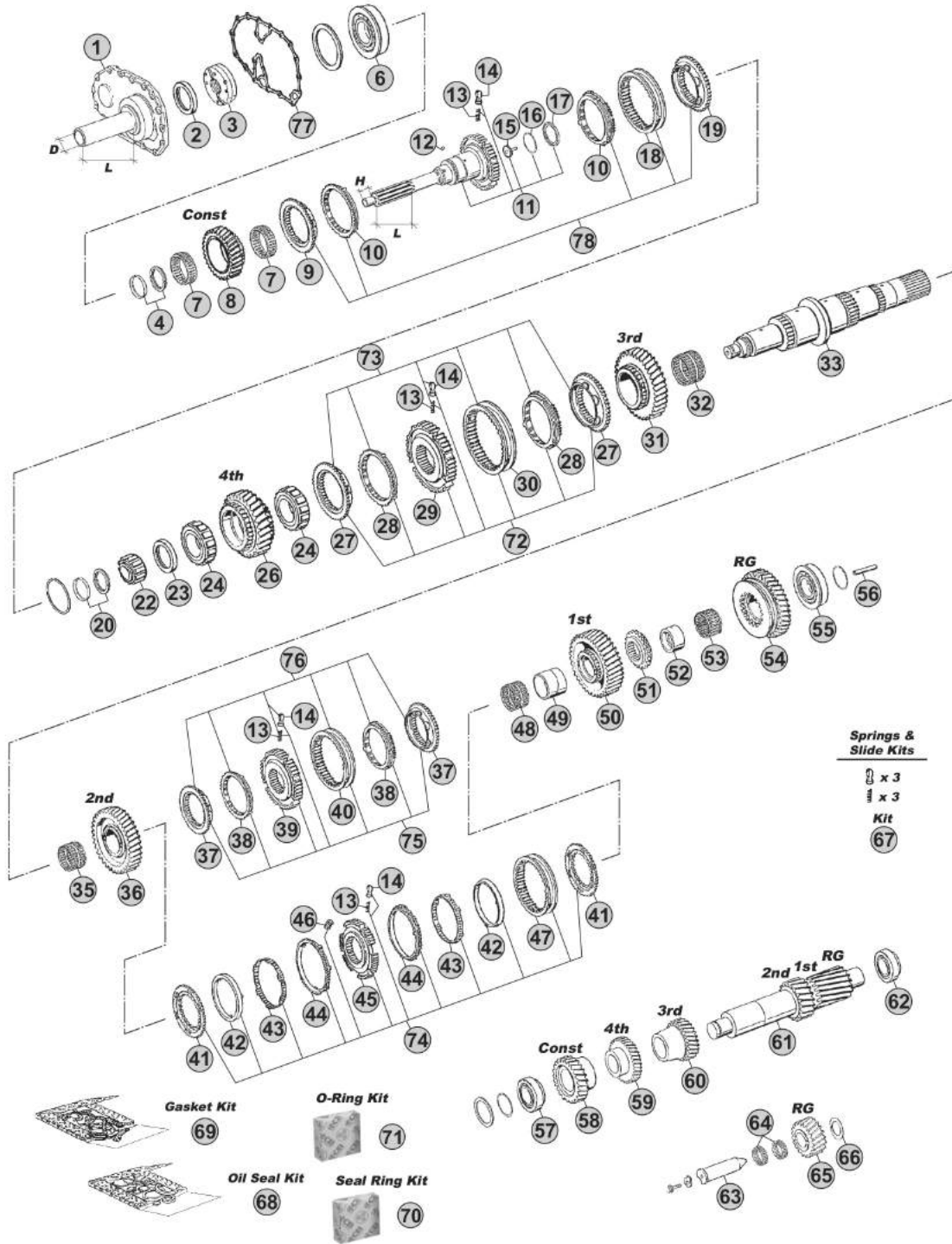
(30) Only for 1st/2nd speed - First version (triple cone) - Do not mix

MODELS:

- ECOSPLIT I-II

VERSIONS:

- 16S150 (1313 xxx xxx)



Notes

(B) R. 13,80-0,84

(C) R. 16,47-1,00

Our spare parts are not the originals but interchangeable with the originals ones. All original equipment manufacturers' numbers, pictures and models used in this catalogue are for reference only. Our products bear our trade-mark.

Fig.	CEI no.	ZF no.	Description	Q.ty	Notes	16S150				
44	119.144	1268 304 525	Synchronizer Ring	2	(30)	●				
45	157.181	1312 304 158	Synchronizer Hub	1	(30)	●				
46	156.176	1312 304 159	Slide	3	(30)	●				
47	154.190	1310 304 175	Sliding Sleeve	1	(30)	●				
48	137.160	0750 115 325	Needle Cage 96x104x55	1		●				
49	117.294	1313 304 038	Bush 95,94x85x54,95	1		●				
50	145.508	1313 304 039	Gear 1st Speed 44 T	1	B	●				
50	145.528	1313 304 070	Gear 1st Speed 47 T	1	C	●				
51	109.177	1313 304 037	Synchronizer cone	1		●				
52	117.293	1315 304 132	Bush 89,94x80x40,95	1		●				
53	137.162	0750 115 324	Roller Cage 90x98x41	1		●				
54	147.137	1313 304 042	Reverse Gear 39 T	1	B	●				
54	147.147	1313 304 041	Reverse Gear 38 T	1	C	●				
55	130.309	0750 117 677	Bearing 80x130x36	1		●				
56	188.209	1312 304 150	Oil Tube	1		●				
57	130.242	0750 117 010	Bearing 50,80x100x35	1		●				
58	146.475	1313 303 004	Constant Gear 37 T	1	B	●				
58	146.443	1296 303 037	Constant Gear 39 T	1	C	●				
59	146.414	1313 303 003	Gear 4th Speed 39 T	1	B	●				
59	146.444	1296 303 036	Gear 4th Speed 37 T	1	C	●				
60	146.420	1313 303 002	Gear 3rd Speed 28 T	1	B	●				
60	146.445	1296 303 035	Gear 3rd Speed 26 T	1	C	●				
61	105.106	1313 303 010	Countershaft 19/23 T	1	B	●				
61	105.113	1313 303 011	Countershaft 17/20 T	1	C	●				
62	130.307	0750 117 011	Bearing 50,8x104,7x39,6	1		●				
63	107.108	1295 305 056	Reverse Gear Pin	1		●				
64	137.007	0750 115 011	Needle Cage 45x53x21	2		●				
65	147.132	1313 305 002	Reverse Gear 21 T	1	B	●				
65	147.148	1313 305 001	Reverse Gear 24 T	1	C	●				
66	169.234	0730 150 064	Thrust Washer	1		●				
67	198.843		Spring Slide kit	1		●				
68	298.881	1312 298 902	Oil Seal Kit	1		●				
69	198.427	1295 298 915	Gasket Kit	1		●				
70	298.427	1312 298 901	Seal Ring Kit	1		●				
71	298.405	1295 298 916	O-Ring Kit	1		●				
72	198.812	1315 298 018	Synchro Kit	1	(20)	●				
72	298.021	1315 298 061	Synchro Kit	1	(21)	●				
73	298.291	1315 298 067	Synchro Kit	1	(21)	●				
73	298.288	1325 298 008	Synchro Kit	1	(22)	●				
73	196.442	1316 298 037	Synchro Kit	1	(23)	●				
74	198.969	1312 298 911	Synchro Kit	1	(30)	●				
75	198.972	1313 298 909	Synchro Kit	1	(31)	●				
75	298.020	1315 298 060	Synchro Kit	1	(32)	●				

ECOSPLIT I-II
16S150

Date

09/2014

Notes

(30) Only for 1st/2nd speed - First version (triple cone) - Do not mix

(20) Only for 3rd/4th Speed - First version - Do not mix

(21) Only for 3rd/4th Speed - Second version - Do not mix

(22) Only for 3rd/4th Speed - Latest type - Do not mix

(23) Only for 3rd/4th Speed - Latest type - Do not mix - Carbon version

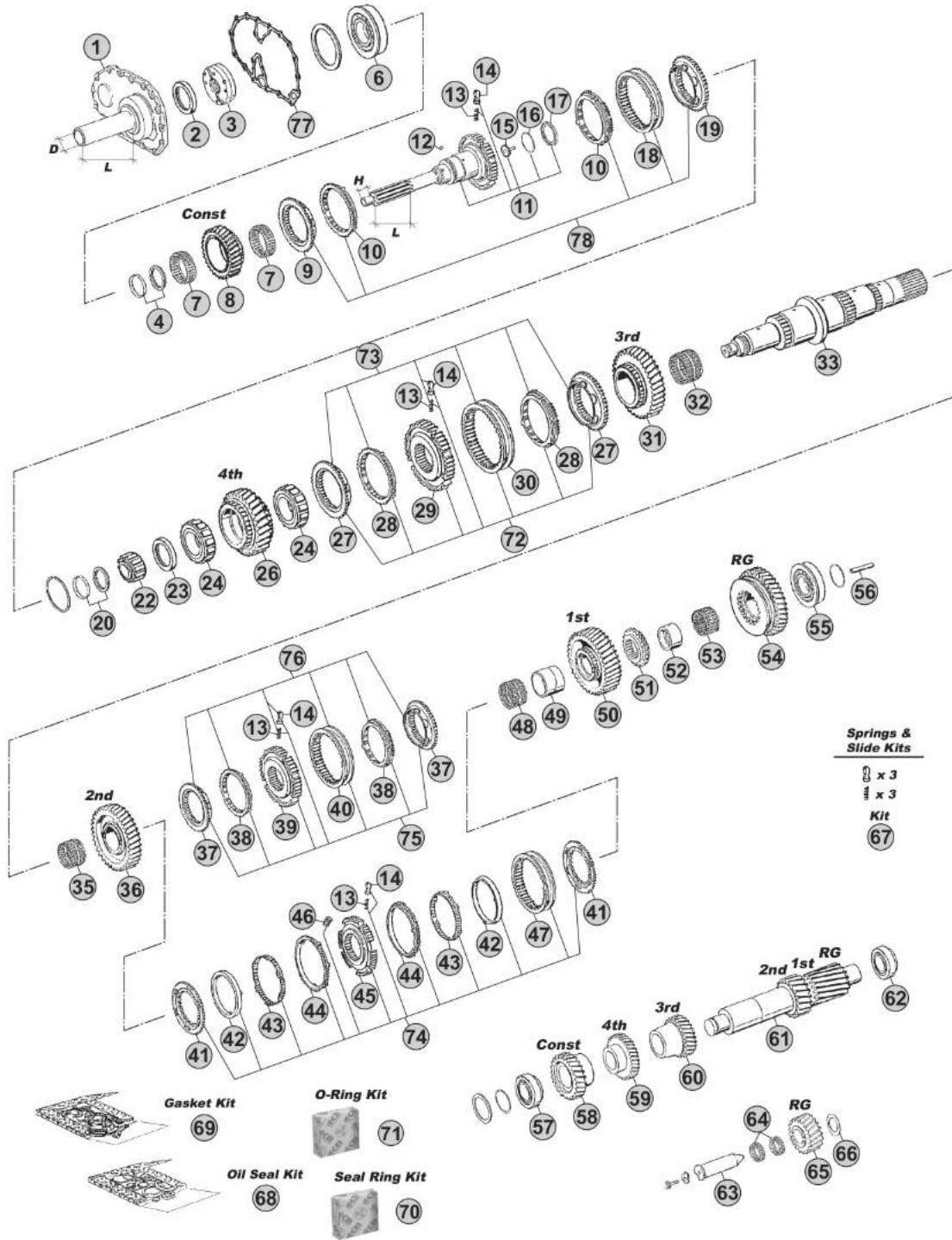
(31) Only for 1st/2nd speed - First version (single cone) - Do not mix

MODELS:

- ECOSPLIT I-II

VERSIONS:

- 16S150 (1313 xxx xxx)



Our spare parts are not the originals but interchangeable with the originals ones. All original equipment manufacturers' numbers, pictures and models used in this catalogue are for reference only. Our products bear our trade-mark.

Notes

(B) R. 13,80-0,84

(C) R. 16,47-1,00

Our spare parts are not the originals but interchangeable with the originals ones. All original equipment manufacturers' numbers, pictures and models used in this catalogue are for reference only. Our products bear our trade-mark.

Fig.	CEI no.	ZF no.	Description	Q.ty	Notes	165150				
76	298.286	1315 298 066	Synchro Kit	1	(32)	●				
76	298.287	1325 298 007	Synchro Kit	1	(33)	●				
76	196.440	1316 298 036	Synchro Kit	1	(34)	●				
77	139.686	1313 302 014	Gasket	1		●				
78	298.319	1297 298 955	Synchro Kit	1	W/"New Type" synchro rings	●				

ECOSPLIT I-II
16S150

Date _____ Notes _____

09/2014

- (32) Only for 1st/2nd speed - Second version (Single cone) - Do not mix
- (33) Only for 1st/2nd speed - Latest type (single cone) - Do not mix
- (34) Only for 1st/2nd speed - Latest type (single cone) - Do not mix - Carbon version

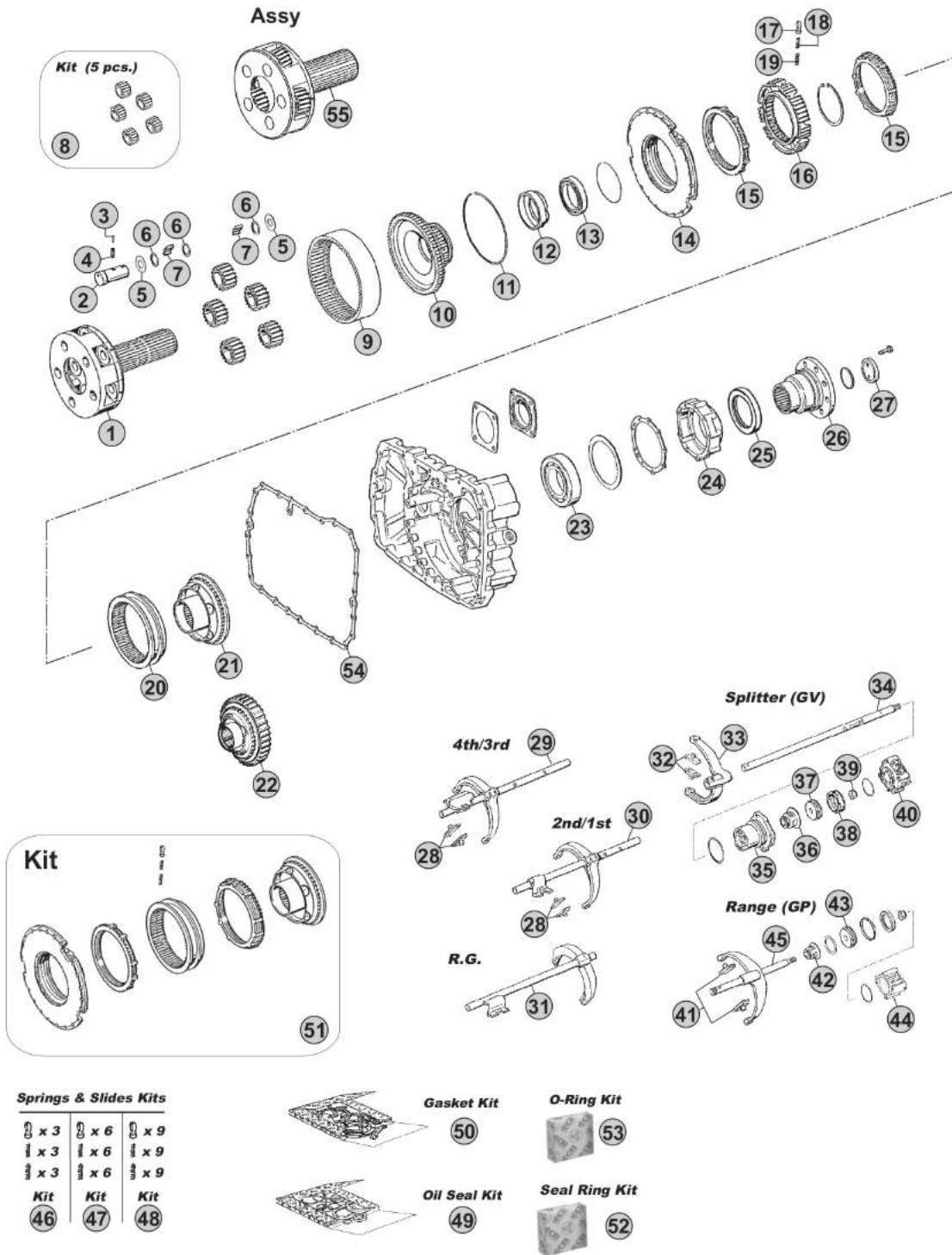


MODELS:

- ECOSPLIT I-II

VERSIONS:

- 16S150 (1313 xxx xxx)



Notes

- (B) R. 13,80-0,84
- (C) R. 16,47-1,00

Our spare parts are not the originals but interchangeable with the originals ones. All original equipment manufacturers' numbers, pictures and models used in this catalogue are for reference only. Our products bear our trade-mark.

Our spare parts are not the originals but interchangeable with the originals ones. All original equipment manufacturers' numbers, pictures and models used in this catalogue are for reference only. Our products bear our trade-mark.

Fig.	CEI no.	ZF no.	Description	Q.ty	Notes	16S150			
1	190.393	1315 232 023	Planetary Carrier	1		●			
2	107.164	1296 332 005	Planet Shaft	5		●			
3	160.195	0631 329 167	Lock Pin 3x26	5		●			
4	160.194	0631 329 051	Lock Pin 5x26	5		●			
5	169.759	0501 308 981	Thrust Washer	10		●			
6	169.744	0730 107 168	Spacer Ring	15		●			
7	171.046	0735 470 164	Roller D.10x15	140		●			
8	198.800	1313 232 003	Planetary Gear Set (5 pcs)	1		●			
9	123.208	1295 332 086	Crown Gear 86 T	1		●			
10	150.133	1313 332 020	Carrier Hub 86 T	1		●			
11	111.198	0730 505 056	Locking Wire	1		●			
12	119.255	1297 332 122	Intermediate Ring	1		●			
13	130.310	0750 116 165	Bearing 80x110x16	1		●			
14	198.358	1296 233 006	Synchro Cone	1		●			
15	119.085	1296 333 022	Synchronizer Ring	2	Old Type	●			
15	119.172	1296 333 045	Synchronizer Ring	2	New Type	●			
16	157.182	1313 333 001	Synchronizer Hub	1		●			
17	160.116	1240 304 278	Pressure Piece	9		●			
18	156.036	0732 040 386	Inner Spring De.3x34	9		●			
19	156.037	0732 040 385	Outer Spring De.6x34	9		●			
20	154.098	1296 333 023	Sliding Sleeve	1	(60)	●			
20	154.434	1316 333 034	Sliding Sleeve	1	(61)	●			
21	198.374	1313 233 001	Synchronizer Cone (38 Spl.)	1	(60)	●			
21	109.775	1315 233 030	Synchronizer Cone (38 Spl.)	1	(61)	●			
22	109.772	1297 333 118	Synchronizer Cone (38 Spl.)	1	(60) With Retarder	●			
23	130.245	0750 116 394	Bearing 90x160x30	1		●			
24	128.098	1315 301 220	Cover	1		●			
25	139.878	0750 111 341	Oil Seal 105x130x12	1		●			
26	197.251	1313 338 002	Output Flange	1	D.180-4 H.	●			
26	197.252	1313 338 011	Output Flange	1	D.204-4 H.	●			
27	188.077	1295 332 051	Stop Washer	1		●			
28	141.163	1297 306 120	Slide	2	2x2 pcs.	●			
29		1313 206 002	Fork	1		●			
29		1313 206 005	Fork	1		●			
29		1313 206 011	Fork	1	(10)	●			
30		1313 206 001	Fork	1		●			
30		1313 206 004	Fork	1		●			
30		1313 206 031	Fork	1	(10)	●			
31		1313 206 015	Fork	1		●			
31		1313 206 016	Fork	1		●			
31		1313 206 026	Fork	1	(10)	●			
32	141.163	1297 306 120	Slide	2		●			
33	141.086	1313 312 002	Shift Yoke	1		●			

 ECOSPLIT I-II
16S150
Date

09/2014

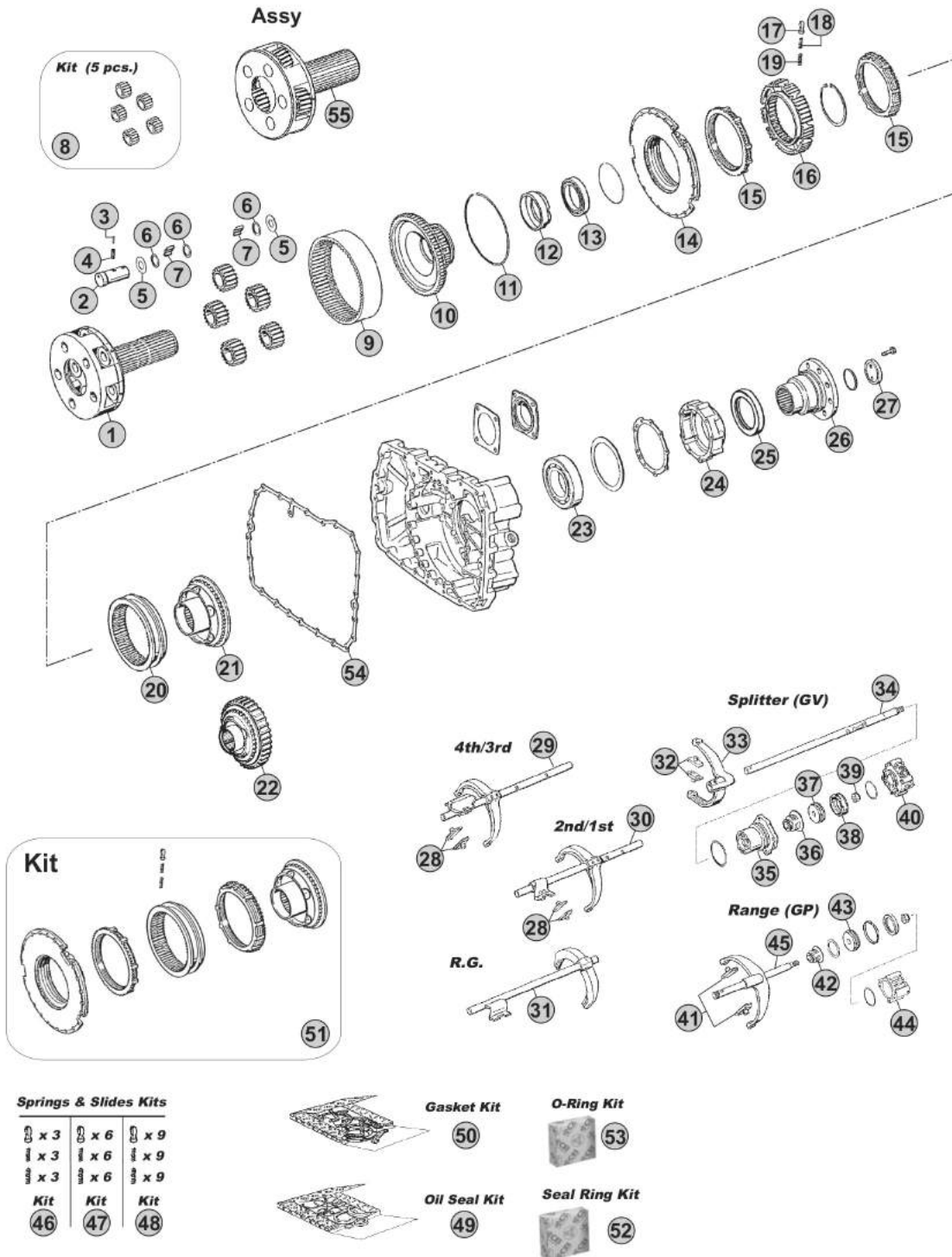
Notes
 (60) Only for old version
 (61) Only for new version
 (10) Only pneumatic version

MODELS:

- ECOSPLIT I-II

VERSIONS:

- 16S150 (1313 xxx xxx)



Our spare parts are not the originals but interchangeable with the originals ones. All original equipment manufacturers' numbers, pictures and models used in this catalogue are for reference only. Our products bear our trade-mark.

Notes

(B) R. 13,80-0,84

(C) R. 16,47-1,00

