

Adattabile a : **SCANIA**  
Suitable To :

**GS770**

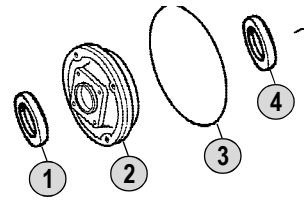
**Oil Pump  
41**



**Oil Filter  
42**



**Oil Seal Kit  
40**



**Note (A)  
7°**

**Note (B)  
6°**

**Const.**

**4th**

**1st**

**2nd**

**3rd**

**Planetary  
Gear  
(GP)**

**RG**

**1st RG**

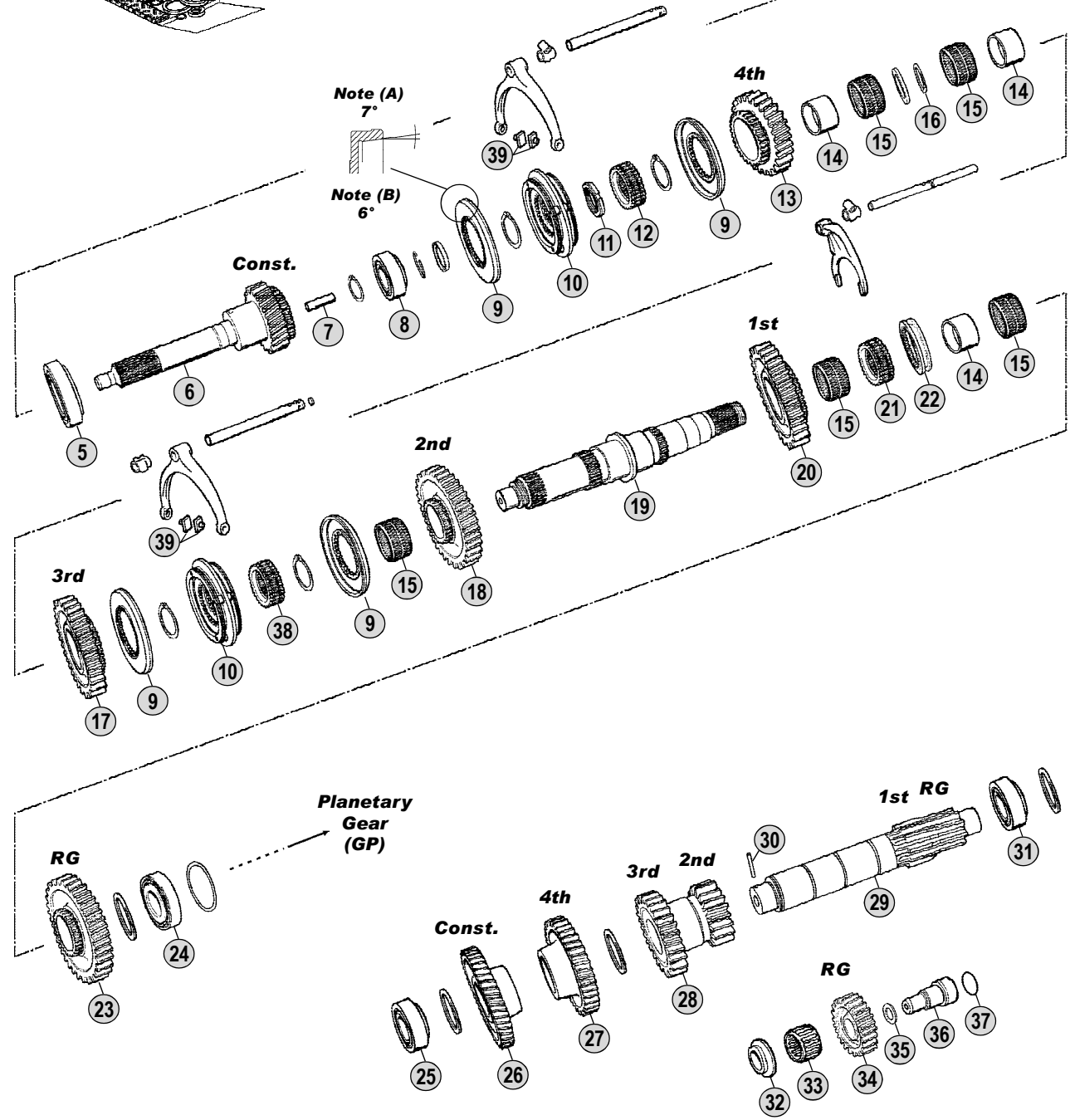
**Const.**

**4th**

**3rd**

**2nd**

**RG**



All original equipment manufacturer's numbers, symbols, pictures, models and description are for reference only, and it is not implied that any part listed is the product of these manufacturers. Tutti i nostri particolari non sono originali ma con essi intercambiabili. I riferimenti originali, le figure, i modelli sono esposti a semplice titolo indicativo. La nostra produzione riporta il nostro marchio.

**Models**

**Serie 1 - Serie 2**

LB81(H) - LB/S/T86(H)

G82 - P82 - G112 - P112 - R112 - T112



Fig.	CEI no.	Rif. SCANIA	Description	Q.ty	Note	GS770				
1	139.420	315270	V-Ring	1		●				
2	135.157	315002	Front Cover	1		●				
3	139.417	194414	O Ring 203x3 mm	1		●				
4	139.418	388528	Oil Seal Ring D.45x65x9	1		●				
5	130.611	1121538	Bearing 76,22x139,7x36	1		●				
6	102.325	294899	Input Shaft 23 T	1		●				
7	189.502	315060	Oil tube	1		●				
8	130.614	284843	Bearing 40x80x32	1		●				
9	109.118	325113	Synchronizer Cone	4	(A)	●				
9	109.117	332118	Synchronizer Cone	4	(B)	●				
10	196.105	244990	Synchronizer Assy.	2	(A)	●				
10	196.216	328117	Synchronizer Assy.	2	(B)	●				
11	187.464	194484	Nut M50x1,5	1		●				
12	157.135	224086	Synchronizer Hub	1		●				
13	145.413	234914	Gear 4th Speed 26 T	1		●				
14	117.361	194376	Bush	3		●				
15	137.238	194413	Needle Cage D.70x78x46	5		●				
16	111.231	264225	Ring	1		●				
17	145.437	325252	Gear 3rd Speed 29 T	1		●				
18	145.733	328382	Gear 2nd Speed 35 T	1		●				
19		294638	Main Shaft	1		●				
20	145.734	264883	Gear 1st Speed 39 T	1		●				
21	157.658	224125	Hub	1		●				
22	154.328	194578	Sliding Sleeve	1		●				
23	147.197	254527	Reverse Gear 39 T	1		●				
24	130.615	284997	Bearing 57x119,9x32,7	1		●				
25	130.616	317350	Bearing 50x90x28	1		●				
26	146.535	304622	Constant Gear 43 T	1		●				
27	146.537	194564	Gear 4th Speed 37 T	1		●				
28	143.095	325255	Double Gear 2nd/3rd Sp.-17/25 T	1		●				
29	105.163	284807	Countershaft 10/10 T	1		●				
30	187.645	340430	Pin	1		●				
31	130.617	294023	Bearing	1		●				
32	169.901	194798	Washer	1		●				
33	137.234	174371	Needle Cage D.38x50x32,8	1		●				
34	147.198	264688	Reverse Gear 23 T	1		●				
35	111.232	194400	Spacer Ring	1		●				
36	107.186	358046	Reverse Pin	1		●				
37	169.902	810974	O-Ring	1		●				
38	157.134	224087	Guide Sleeve	1		●				
39	141.169	244090	Slide	4		●				
40	198.621	550520	Oil Seals Kit	1	(1)	●				
40	198.978	550537	Oil Seals Kit	1	(2)	●				
41	280.609	194838	Oil Pump	1		●				
42	280.610	224367	Oil Filter	1		●				

## Notes

- (A) Use items marked (A) together  
 (B) Use items marked (B) together  
 (1) Containing 1 pc. 194414 Size 203x3 (Fig.3)  
 (2) Containing 1 pc. 1309563 Size 203x5

## Date

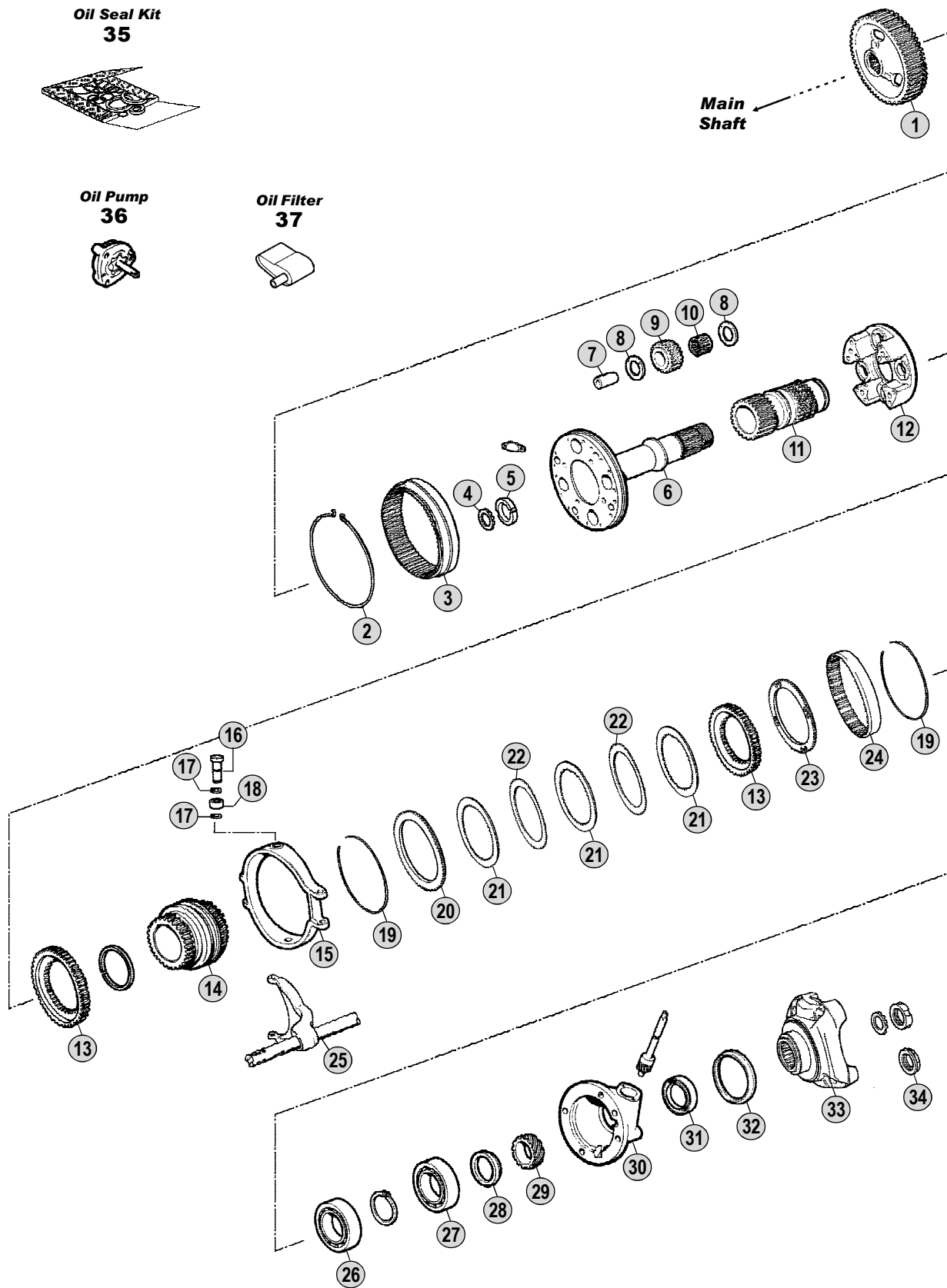
05 / 2010

## Table

0040

Adattabile a : **SCANIA**  
Suitable To :

**GS770**



All original equipment manufacturers numbers, symbols and description used in this catalogue are for reference only, and it is not implied that any part listed is the product of these manufactures. Tutti i nostri particolari non sono originali ma con essi intercambiabili. I riferimenti originali, le figure, i modelli sono esposti a semplice titolo indicativo. La nostra produzione riporta il nostro marchio.

Models

**Serie 1 - Serie 2**

LB81(H) - LB/S/T86(H)

G82 - P82 - G112 - P112 - R112 - T112



Fig.	CEI no.	Rif. SCANIA	Description	Q.ty	Note	GS770			
1		164014	Gear	1		●			
2	111.233	164939	Retainer Ring	1		●			
3	123.251	164016	Crown Gear 89 T	1		●			
4	169.900	184055	Washer	1		●			
5	187.461	184054	Grooved Nut M50x1,5	1		●			
6		274077	Planetary Carrier	1		●			
7		164032	Pin	4		●			
8		164033	Washer	8		●			
9	157.660	164030	Planetary Gear 19 T	4		●			
10	137.234	174371	Needle Cage D.38x50x32,8	4		●			
11		264115	Sun Gear	1		●			
12		264801	Planetary Plate	1		●			
13		194821	Hub	2		●			
14		254987	Coupling Sleeve	1		●			
15		184498	Collar	1		●			
16		184905	Pin	2		●			
17		194298	Ring	4		●			
18		214088	Bearing	2		●			
19	111.145	184492	Lock Ring D.2mm	4		●			
20		194822	Pressure Ring	2		●			
21	109.082	194429	Inner Disk 50 T	6		●			
22	109.081	325114	Outer Disk 68 T	4		●			
23		234882	Gear Disk	2		●			
24	123.168	184490	Disk Housing	2		●			
25		274001	Fork	1	Complete	●			
26		164042	Bearing	1		●			
27	130.620	32302	Bearing	1		●			
28		151099	Spacer	1		●			
29	126.027	174806	Speedometer Gear	1		●			
30		194893	Cover	1		●			
31	139.384	1335243	Oil Seal Ring D.80x100x10 (Green)	1	Old Style (Green)	●			
31	139.544	338643	Oil Seal Ring (Brown)	1	New Style (Brown)	●			
32	189.481	1307760	Dust Cover	1		●			
33	197.065	169133	Output Flange	1	T-TA 60/T62	●			
33	197.100	208513	Output Flange	1	T-TA 70	●			
33	197.101	315548	Output Flange	1	(3) P/PF40	●			
33	197.102	338234	Output Flange	1	(4) P/PF40	●			
34	187.468	315085	Grooved Nut M50x1,5	1		●			
35	198.621	550520	Oil Seals Kit	1	(1)	●			
35	198.978	550537	Oil Seals Kit	1	(2)	●			
36	280.609	194838	Oil Pump	1		●			
37	280.610	224367	Oil Filter	1		●			

## Notes

- (1) Containing 1 pc. **194414** Size **203x3**  
(2) Containing 1 pc. **1309563** Size **203x5**  
(3) Old Type with spider straight housing (0°)  
(4) New Type with spider elical housing (4,5°)

## Date

05 / 2010

## Table

0045