

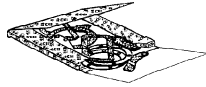
Adattabile a : **SCANIA**
 Suitable To :

Modelli Cambio/ Gearbox Models
GR880(T) - GRH880

**Oil Seal Kit
64**



**Gasket Kit
65**



**Oil Pump
66**

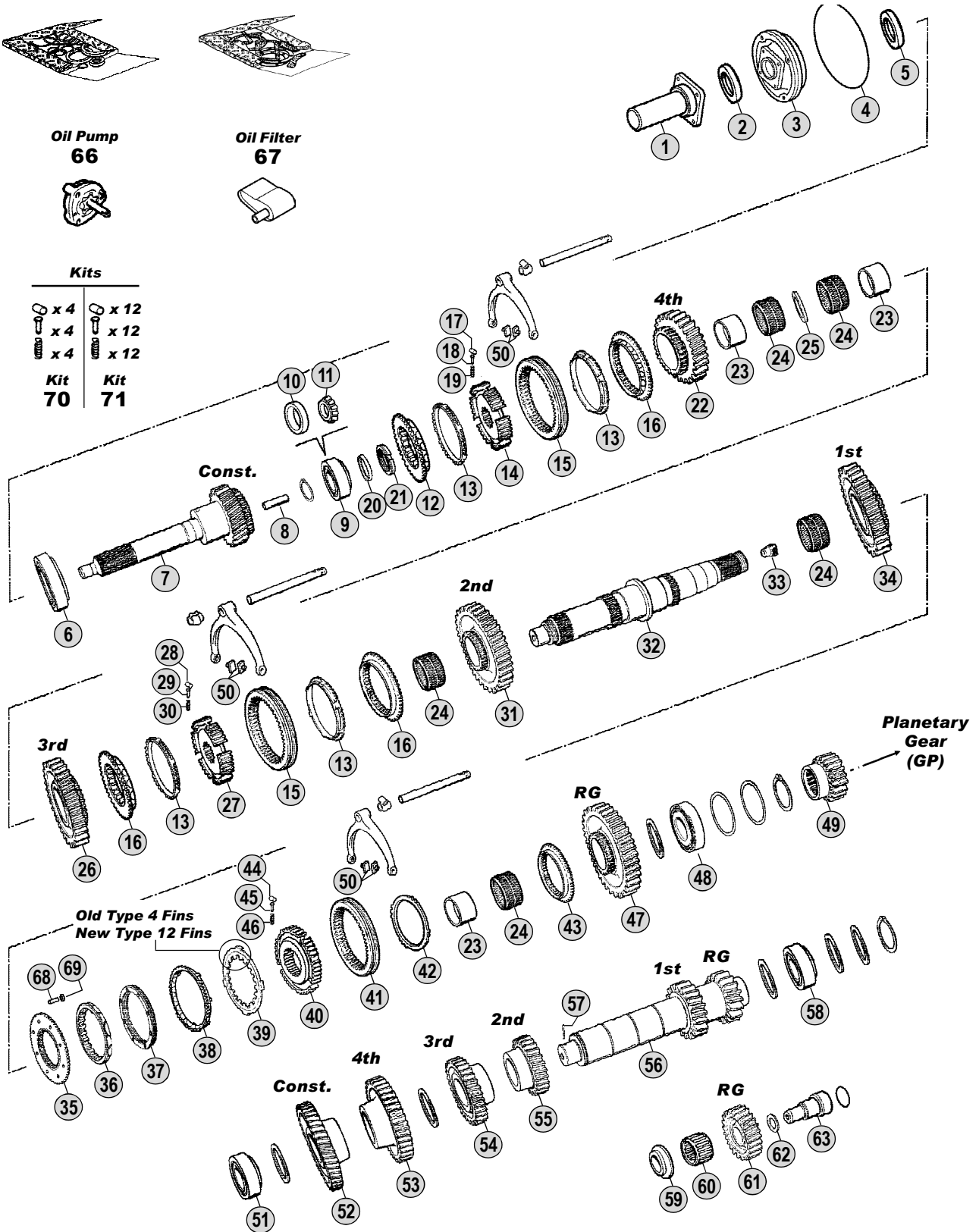


**Oil Filter
67**



Kits

- | | | | |
|------------|-----------|------------|-----------|
| | x 4 | | x 12 |
| | x 4 | | x 12 |
| | x 4 | | x 12 |
| Kit | 70 | Kit | 71 |



Models

Serie 2 - Serie 3

R142 - T142

P113 - R113 - T113 - R143 - T143



All original equipment manufacturer's numbers, symbols, models and description are for reference only, and it is not implied that any part listed is the product of these manufacturers. Tutti i nostri particolari non sono originali ma con essi intercambiabili. I riferimenti originali, le figure, i modelli sono esposti a semplice titolo indicativo. La nostra produzione riporta il nostro marchio.

Fig.	CEI no.	Rif. SCANIA	Description	Q.ty	Note					
						GR880	GR880T	GRH880		
1	135.150	1103619	Front Cover	1		●	●	●		
2	139.420	315270	V-Ring	1		●	●	●		
3	135.158	375761	Front Cover	1	Up to 6619486	●	●	●		
3	135.159	1312884	Front Cover	1	From 6619487	●	●	●		
4	139.417	194414	O Ring 203x3 mm	1	Up to 6619486	●	●	●		
4	139.725	1309563	O-Ring 203x3 mm	1	From 6619487	●	●	●		
5	139.418	388528	Oil Seal Ring D.45x65x9	1		●	●	●		
6	130.611	1121538	Bearing 76,22x139,7x36	1		●	●	●		
7	102.333	1308366	Input Shaft 25 T	1		●	●	●		
8	189.502	315060	Oil tube	1		●	●	●		
9	130.621	361043	Bearing 40x85x33	1	Oem Old Type	●	●	●		
9	530.621	361043	Bearing 40x85x33	1	A.Market Old Type	●	●	●		
10	130.529	1548819	Bearing Cone 85 mm	1	Oem New Type	●	●	●		
10	530.529	1548819	Bearing Cone 85 mm	1	A.Market New Type	●	●	●		
11	130.530	1883975	Roller Bearing 40x30 mm	1	New Type	●	●	●		
12	109.369	371687	Synchronizer Cone	1		●	●	●		
13	119.145	1382465	Synchronizer Ring	4	(A)	●	●	●		
13	119.236	1756447	Synchronizer Ring	4	(B)	●	●	●		
14	157.665	369905	Synchronizer Hub	1		●	●	●		
15	154.194	369906	Sliding Sleeve	2	(A)	●	●	●		
15	154.386	1529939	Sliding Sleeve	2	(B)	●	●	●		
16	109.370	369908	Synchronizer Cone	3		●	●	●		
17	160.198	374334	Roller	4		●	●	●		
18	160.199	369910	Pin	4		●	●	●		
19	156.177	369911	Spring	4		●	●	●		
20	111.234	358404	Ring	1		●	●	●		
21	187.464	194484	Nut M50x1,5	1		●	●	●		
22	145.746	365736	Gear 4th Speed 28 T	1		●	●	●		
23	117.361	194376	Bush	3		●	●	●		
24	137.238	194413	Needle Cage D.70x78x46	5		●	●	●		
25	111.231	264225	Ring	1		●	●	●		
26	145.747	365735	Gear 3rd Speed 30 T	1		●	●	●		
27	157.666	369904	Synchronizer Hub	1		●	●	●		
28	160.198	374334	Roller	4		●	●	●		
29	160.199	369910	Pin	4		●	●	●		
30	156.177	369911	Spring	4		●	●	●		
31	145.748	365734	Gear 2nd Speed 33 T	1		●	●	●		
32	103.106	331880	Main Shaft	1	(1)	●	●	●		
32	103.176	1333269	Main Shaft	1	(2)	●	●	●		
33	189.619	374326	Plug	1		●	●	●		
34	145.749	365733	Gear 1st Speed 35 T	1		●	●	●		
35	109.371	381226	Synchronizer Cone	1		●	●	●		
36	119.203	1438526	Synchronizer Ring	1		●	●	●		
37	119.147	1383895	Intermediate Synchro Ring	1	(A)	●	●	●		
37	119.235	1466318	Intermediate Synchro Ring	1	(B)	●	●	●		

Notes

- (A) Standard Generation. Use items marked (A) together.
 (B) LATEST GENERATION. Use items marked (B) together.
 (1) Old style Mainshaft. This Old type can use both Old (339800) and New (1333270) Style sun gear
 (2) New style Mainshaft. This New type can use Only New style sun gear (1333270)
 (3) Old style with 4 fins not listed in the catalogue. The old ring 391804 (fig.39) and the old Synchro ring 373272 (fig.38) can be replaced by :
 1 pc. 169.740 - 1401622 (Fig.39) + 1 pc. 119.146 - 1401620 (Fig.38)

Date

05 / 2010

Table

0120

Fig.	CEI no.	Rif. SCANIA	Description	Q.ty	Note						
						GR880	GR880T	GRH880			
38	119.146	1401620	Synchronizer Ring	1	(A)(3) New Style 12 Fins	●	●	●			
38	119.202	1529950	Synchronizer Ring	1	(B)	●	●	●			
39	169.740	1401622	Driver Plate	1	(A)(3) New Style 12 Fins	●	●	●			
39	169.848	1533848	Driver Plate	1	(B)	●	●	●			
40	157.667	383095	Synchronizer Hub	1		●	●	●			
41	154.196	371692	Sliding Sleeve	1	(A)	●	●	●			
41	154.386	1529939	Sliding Sleeve	1	(B)	●	●	●			
42	111.237	395759	Ring	1		●	●	●			
43	109.372	369909	Synchronizer Cone	1		●	●	●			
44	160.198	374334	Roller	4		●	●	●			
45	160.199	369910	Pin	4		●	●	●			
46	156.177	369911	Spring	4		●	●	●			
47	147.206	365737	Reverse Gear 30 T	1		●	●	●			
48	130.615	284997	Bearing 57x119,9x32,7	1		●	●	●			
49	157.145	339800	Sun Gear 17 T	1	(1)	●	●	●			
49	157.664	1333270	Sun Gear 17 T	1	(2)	●	●	●			
50	141.176	352889	Slide	6		●	●	●			
51	130.295	1903570	Bearing D.50x100x37,65	1	Oem	●	●	●			
51	530.295	1903570	Bearing D.50x100x37,65	1	A.Market	●	●	●			
52	146.543	1308365	Constant Gear 39 T	1		●	●	●			
53	146.544	368913	Gear 4th Speed 34 T	1		●	●	●			
54	146.545	368912	Gear 3rd Speed 27 T	1		●	●	●			
55	146.546	368911	Gear 2nd Speed 22 T	1		●	●	●			
56	105.167	372386	Countershaft 15/17 T	1		●	●	●			
57	187.645	340430	Pin	1		●	●	●			
58	130.623	284992	Bearing 69,8x120x29,8	1		●	●	●			
59	169.901	194798	Washer	1		●	●	●			
60	137.241	361044	Needle Cage	1		●	●	●			
61	147.207	368921	Reverse Gear 21 T	1		●	●	●			
62	111.232	194400	Spacer Ring	1		●	●	●			
63	107.190	369569	Reverse Gear Pin	1		●	●	●			
64	198.985	550535	Oil Seal Kit	1	Up to 6619486	●	●	●			
64	198.986	550538	Oil Seal Kit	1	From 6619487	●	●	●			
65	198.987	550536	Gasket Kit	1		●	●	●			
66	280.609	194838	Oil Pump	1		●	●	●			
67	280.610	224367	Oil Filter	1		●	●	●			
68	160.193	1340002	Pin	8		●	●	●			
69	111.197	383138	Lock Ring	8		●	●	●			
70	198.847	CEI 198847	Roller-Pins and Springs kit	1		●	●	●			
71	198.848	CEI 198848	Roller-Pins and Springs kit	1		●	●	●			

All original equipment manufacturers numbers, symbols, pictures, models and description used in this catalogue are for reference only, and it is not implied that any part listed is the product of these manufactures.
Tutti i nostri particolari non sono originali ma con essi intercambiabili. I riferimenti originali, le figure, i modelli sono esposti a semplice titolo indicativo. La nostra produzione riporta il nostro marchio.

Notes

- (A) Standard Generation. Use items marked (A) together.
 (B) LATEST GENERATION. Use items marked (B) together.
 (1) Old style Mainshaft. This Old type can use both Old (339800) and New (1333270) Style sun gear
 (2) New style Mainshaft. This New type can use Only New style sun gear (1333270)
 (3) Old style with 4 fins not listed in the catalogue. The old ring 391804 (fig.39) and the old Synchro ring 373272 (fig.38) can be replaced by :
 1 pc. 169.740 - 1401622 (Fig.39) + 1 pc. 119.146 - 1401620 (Fig.38)

Date

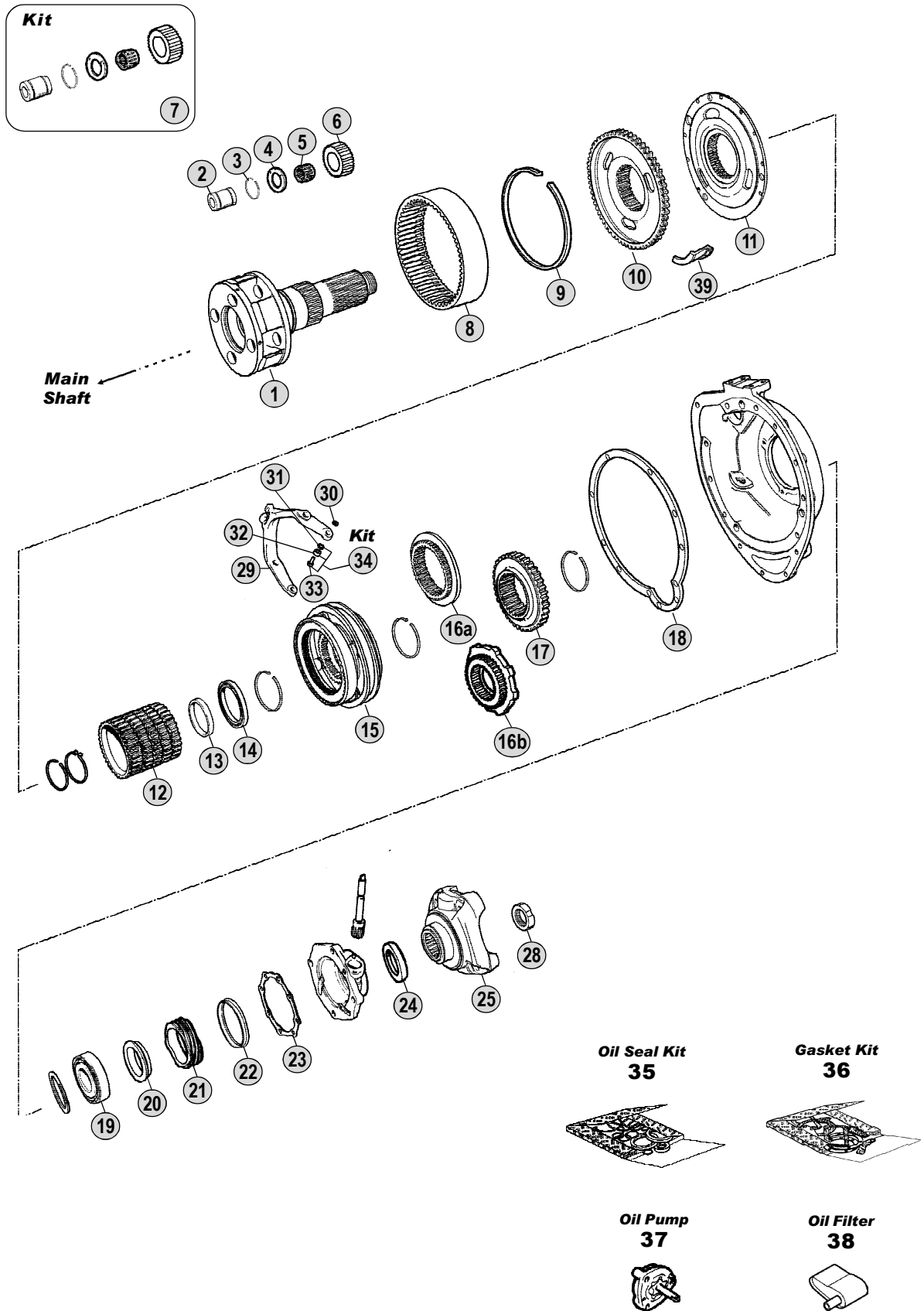
05 / 2010

Table

0120

Adattabile a : **SCANIA**
 Suitable To :

Modelli Cambio/ Gearbox Models
GR880(T) - GRH880



All original equipment manufacturers' numbers, symbols, pictures, models and description used in this catalogue are for reference only, and it is not implied that any part listed is the product of these manufacturers. Tutti i nostri particolari non sono originali ma con essi intercambiabili. I riferimenti originali, le figure, i modelli sono esposti a semplice titolo indicativo. La nostra produzione riporta il nostro marchio.

Models

Serie 2 - Serie 3

R142 - T142

P113 - R113 - T113 - R143 - T143



Fig.	CEI no.	Rif. SCANIA	Description	Q.ty	Note					
						GR880	GR880T	GRH880		
1	103.177	392363	Output Shaft	1		●	●	●		
2	107.118	234184	Planetary Pin	4		●	●	●		
3	111.162	234193	Snap Ring	8		●	●	●		
4	169.490	254669	Thrust Washer	8		●	●	●		
5	137.114	194381	Needle Cage D.49x65x38	4		●	●	●		
6	157.144	358360	Side Pinion 19 T	4		●	●	●		
7	198.577	CEI 198577	Repair Kit	4		●	●	●		
8	123.189	194349	Crown Gear 55 T	1		●	●	●		
9	111.235	284444	Retainer Ring	1		●	●	●		
10	150.124	338867	Carrier Hub	1		●	●	●		
11	150.120	1103707	Carrier Hub	1		●	●	●		
12	157.148	284675	Guide Sleeve	1		●	●	●		
13	111.236	244537	Ring	1		●	●	●		
14	130.624	244610	Bearing 75x95x10	1		●	●	●		
15	196.158	244622	Synchronizer Assy.	1		●	●	●		
16A	109.080	333547	Synchronizer Cone	1	Up to 6621133	●	●	●		
16B	109.141	360627	Synchronizer Cone	1	From 6621134	●	●	●		
17	157.149	1114838	Hub	1		●	●	●		
18	139.722	387300	Gasket	1		●	●	●		
19	130.625	194508	Bearing 75x130x25	1		●	●	●		
20	169.909	315977	Spacer	1		●	●	●		
21	126.027	174806	Speedometer Gear	1		●	●	●		
22	189.481	1307760	Dust Cover	1		●	●	●		
23	139.723	387302	Gasket	1		●	●	●		
24	139.384	1335243	Oil Seal Ring D.80x100x10 (Green)	1	Old Style (Green)	●	●	●		
24	139.544	338643	Oil Seal Ring (Brown)	1	New Style (Brown)	●	●	●		
25	197.077	338235	Output Flange	1	P/PF50	●	●	●		
25	197.109	373825	Output Flange	1	P/PF60	●	●	●		
28	187.486	1525988	Nut M44x1,5	1		●	●	●		
29	141.138	397406	Fork	1		●	●	●		
30	111.169	804768	Lock Ring	2		●	●	●		
31	169.641	214075	Spacer	2		●	●	●		
32	137.116	244437	Needle Bearing	2		●	●	●		
33	160.173	234017	Pin	2		●	●	●		
34	198.638	CEI 198638	Fork Repair Kit	1	2pcs. fig.31+32+33	●	●	●		
35	198.985	550535	Oil Seal Kit	1	Up to 6619486	●	●	●		
35	198.986	550538	Oil Seal Kit	1	Fom 6619487	●	●	●		
36	198.987	550536	Gasket Kit	1		●	●	●		
37	280.609	194838	Oil Pump	1		●	●	●		
38	280.610	224367	Oil Filter	1		●	●	●		
39	139.726	1101657	Oil Collector	1		●	●	●		

Notes

Date

05 / 2010

Table

0125

All original equipment manufacturer's numbers, symbols, pictures, models and description used in this catalogue are for reference only, and it is not implied that any part listed is the product of these manufactures.
 Tutti i nostri particolari non sono originali ma con essi intercambiabili. I riferimenti originali, le figure, i modelli sono esposti a semplice titolo indicativo. La nostra produzione riporta il nostro marchio.