

Adattabile a : **SCANIA** **GRS890 - GRS890R** (W/Retarder)
 Suitable To :

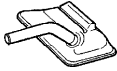
Oil Seal & Gasket Kit
88 - 89 - 90



Oil Pump
83



Oil Filter
84

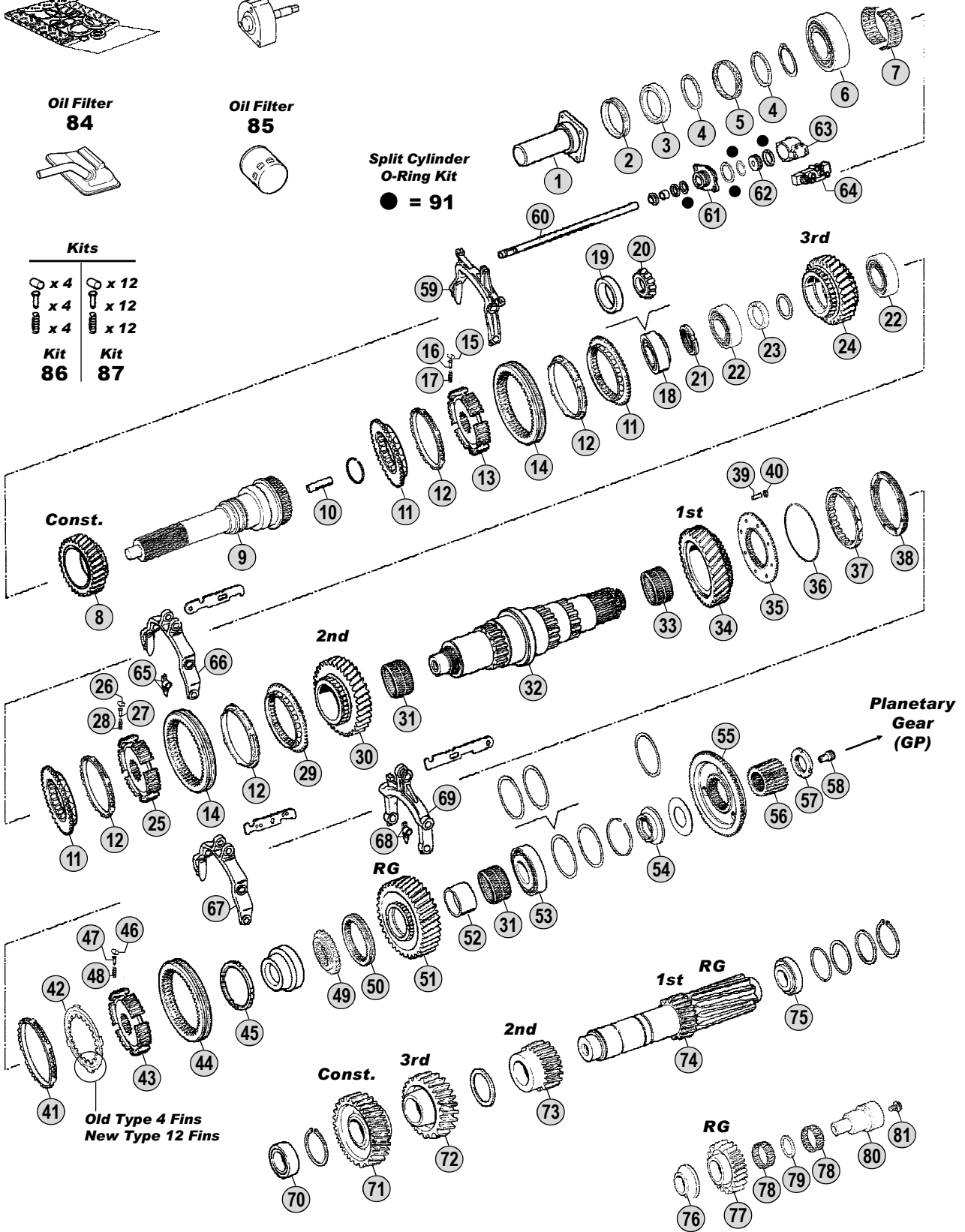


Oil Filter
85



Split Cylinder
O-Ring Kit
 ● = 91

| Kits | |
|-------------------------|-------------------------|
| x 4 | x 12 |
| x 4 | x 12 |
| x 4 | x 12 |
| Kit 86 | Kit 87 |



All original equipment manufacturers numbers, symbols, pictures and description used in this catalogue are for reference only, and it is not implied that any part listed is the product of these manufactures. Tutti i nostri particolari non sono originali ma con essi intercambiabili. I riferimenti originali, le figure, i modelli sono esposti a semplice titolo indicativo. La nostra produzione riporta il nostro marchio.

Models

Serie 4

94C - 94D - 94G - 94L

114C - 114G - 114L - 124C - 124G - 124L



| Fig. | CEI no. | Rif. SCANIA | Description | Q.ty | Note | GRS890 | GRS890R | | | |
|------|---------|-------------|-------------------------|------|-------------------|--------|---------|--|--|--|
| 1 | 135.156 | 1103934 | Cover | 1 | | ● | ● | | | |
| 2 | 139.569 | 378613 | V-Ring D.45 | 1 | Excl.EK models | ● | ● | | | |
| 3 | 139.567 | 1318388 | Oil Seal 55x75x9 | 1 | | ● | ● | | | |
| 4 | 139.582 | 1515004 | Ring | 2 | | ● | ● | | | |
| 5 | 139.583 | 1114315 | Ring | 1 | | ● | ● | | | |
| 6 | 130.528 | 1327878 | Bearing D.65x150x40 | 1 | Oem | ● | ● | | | |
| 6 | 530.528 | 1327878 | Bearing D.65x150x40 | 1 | A.Market | ● | ● | | | |
| 7 | 137.169 | 372778 | Needle Cage 92X100X44 | 1 | | ● | ● | | | |
| 8 | 145.572 | 1116457 | Constant Gear 29 T | 1 | | ● | ● | | | |
| 9 | 102.264 | 1377307 | Input Shaft | 1 | | ● | ● | | | |
| 9 | 102.334 | 1378579 | Input Shaft | 1 | EK-PTO | ● | ● | | | |
| 10 | 189.502 | 315060 | Oil tube | 1 | | ● | ● | | | |
| 11 | 109.167 | 1116475 | Synchronizer Cone | 3 | | ● | ● | | | |
| 12 | 119.145 | 1382465 | Synchronizer Ring | 4 | (G) | ● | ● | | | |
| 12 | 119.236 | 1756447 | Synchronizer Ring | 4 | (H) | ● | ● | | | |
| 13 | 157.552 | 1376499 | Synchronizer Hub | 1 | | ● | ● | | | |
| 14 | 154.194 | 369906 | Sliding Sleeve | 2 | (G) | ● | ● | | | |
| 14 | 154.386 | 1529939 | Sliding Sleeve | 2 | (H) | ● | ● | | | |
| 15 | 160.198 | 374334 | Roller | 4 | | ● | ● | | | |
| 16 | 160.199 | 369910 | Pin | 4 | | ● | ● | | | |
| 17 | 156.177 | 369911 | Spring | 4 | | ● | ● | | | |
| 18 | 130.621 | 361043 | Bearing 40x85x33 | 1 | Oem Old Type | ● | ● | | | |
| 18 | 530.621 | 361043 | Bearing 40x85x33 | 1 | A.Market Old Type | ● | ● | | | |
| 19 | 130.529 | 1548819 | Bearing Cone 85 mm | 1 | Oem New Type | ● | ● | | | |
| 19 | 530.529 | 1548819 | Bearing Cone 85 mm | 1 | A.Market New Type | ● | ● | | | |
| 20 | 130.530 | 1883975 | Roller Bearing 40x30 mm | 1 | New Type | ● | ● | | | |
| 21 | 187.647 | 1461414 | Nut | 1 | | ● | ● | | | |
| 22 | 130.531 | 1548056 | Bearing | 2 | Oem | ● | ● | | | |
| 22 | 530.531 | 1548056 | Bearing | 2 | A.Market | ● | ● | | | |
| 23 | 111.238 | 1302731 | Spacer T.9,50 mm | 1 | | ● | ● | | | |
| 23 | 111.239 | 1302732 | Spacer T.9,52 mm | 1 | | ● | ● | | | |
| 23 | 111.240 | 1302733 | Spacer T.9,54 mm | 1 | | ● | ● | | | |
| 23 | 111.241 | 1302734 | Spacer T.9,56 mm | 1 | | ● | ● | | | |
| 23 | 111.242 | 1302735 | Spacer T.9,58 mm | 1 | | ● | ● | | | |
| 24 | 145.573 | 1116459 | Gear 3rd Speed | 1 | (A) | ● | ● | | | |
| 24 | 145.511 | 1367794 | Gear 3rd Speed 32 T | 1 | (B) | ● | ● | | | |
| 25 | 157.553 | 1405981 | Synchronizer Hub | 1 | | ● | ● | | | |
| 26 | 160.198 | 374334 | Roller | 4 | | ● | ● | | | |
| 27 | 160.199 | 369910 | Pin | 4 | | ● | ● | | | |
| 28 | 156.177 | 369911 | Spring | 4 | | ● | ● | | | |
| 29 | 109.165 | 1116477 | Synchronizer Cone | 1 | | ● | ● | | | |
| 30 | 145.512 | 1116461 | Gear 2nd Speed 35 T | 1 | | ● | ● | | | |
| 31 | 137.170 | 378628 | Needle Cage D.80x88x40 | 2 | | ● | ● | | | |
| 32 | 103.178 | 1325344 | Main Shaft | 1 | (C) | ● | ● | | | |
| 32 | 103.136 | 1382978 | Main Shaft | 1 | (D) | ● | ● | | | |

Notes

(A) Up to Gearbox 6745013 (B) From Gearbox 6745014 (C) Up to Gearbox 6757126
 (D) From Gearbox 6757127 (E) Up to Gearbox 6932500 (F) From Gearbox 6932501

(G - H) To be coupled together

(I) Old style with 4 fins not listed in the catalogue. The old ring 391804 (fig.42) and the old Synchro ring 373272 (fig.41) can be replaced by:
 1 pc. 169.740 - 1401622 (Fig.42) + 1 pc. 119.146 - 1401620 (Fig.41)

(*) Old and New Generation. Can be replaced by Synchro rebuilt kit 298.188 (Latest Gen.) shown in the next table.

(@) LATEST GENERATION. To be coupled together.

Date

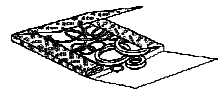
05 / 2010

Table

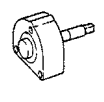
0130

Adattabile a : **SCANIA** **GRS890 - GRS890R** (W/Retarder)
 Suitable To :

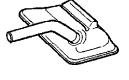
Oil Seal & Gasket Kit
88 - 89 - 90



Oil Pump
83



Oil Filter
84



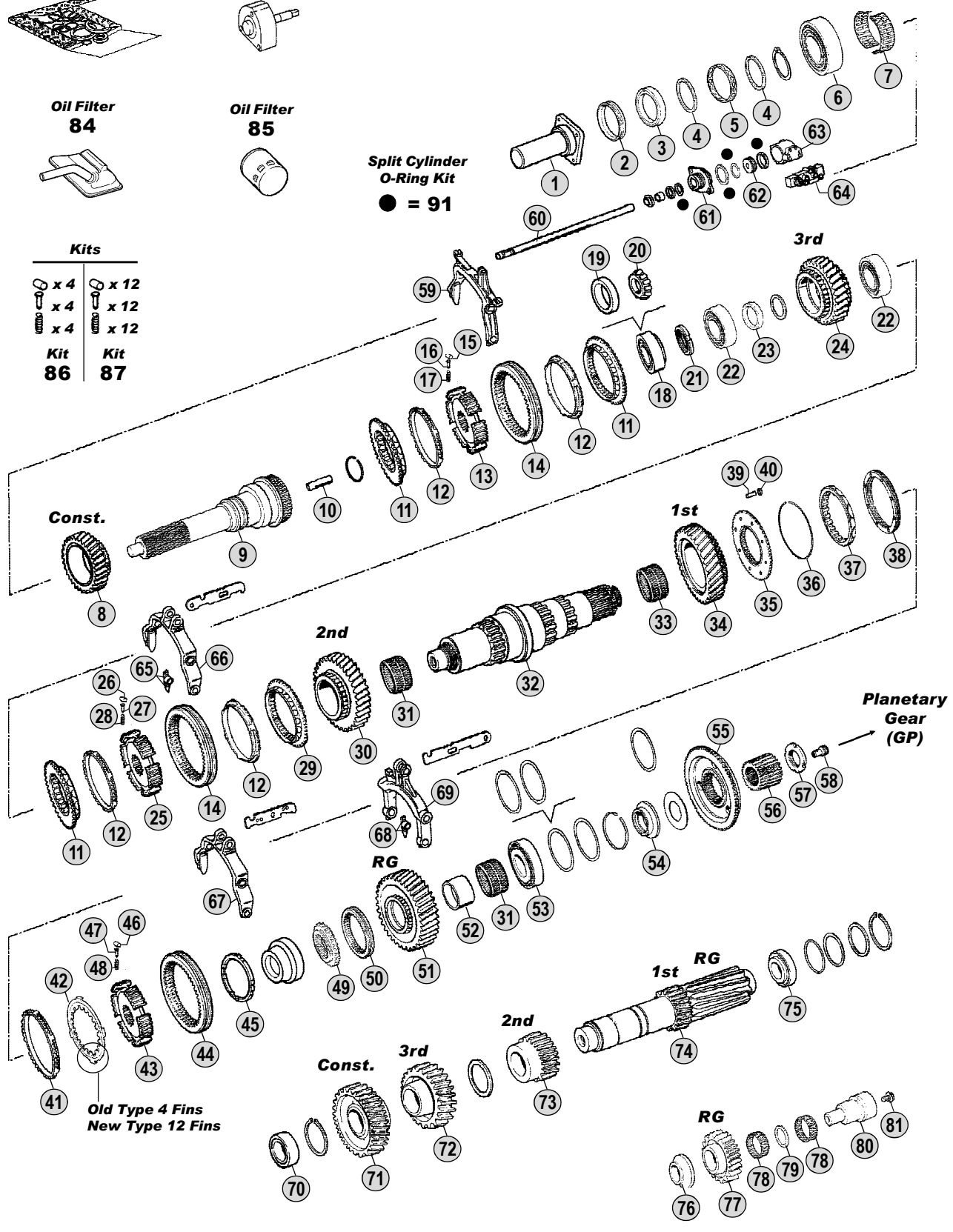
Oil Filter
85



Split Cylinder
O-Ring Kit
 ● = 91

Kits

| | |
|-------------------------|-------------------------|
| x 4 | x 12 |
| x 4 | x 12 |
| x 4 | x 12 |
| Kit 86 | Kit 87 |



All original equipment manufacturer's numbers, symbols, pictures and description are for reference only, and it is not implied that any part listed is the product of these manufactures. Tutti i nostri particolari non sono originali ma con essi intercambiabili. I riferimenti originali, le figure, i modelli sono esposti a semplice titolo indicativo. La nostra produzione riporta il nostro marchio.

Models

Serie 4

94C - 94D - 94G - 94L

114C - 114G - 114L - 124C - 124G - 124L



GRS890

GRS890R

| Fig. | CEI no. | Rif. SCANIA | Description | Q.ty | Note | | | | |
|------|---------|-------------|---------------------------|------|--------------------------|---|---|--|--|
| 33 | 137.171 | 378616 | Needle Cage D.80x88x55 | 1 | | ● | ● | | |
| 34 | 145.574 | 1373172 | Gear 1st Speed 39 T | 1 | (E) | ● | ● | | |
| 34 | 145.575 | 1393876 | Gear 1st Speed 44 T | 1 | (F) | ● | ● | | |
| 35 | 109.166 | 1300061 | Synchronizer Cone | 1 | | ● | ● | | |
| 36 | 111.243 | 1300065 | Lock Ring | 1 | (E) | ● | ● | | |
| 37 | 119.203 | 1438526 | Synchronizer Ring | 1 | | ● | ● | | |
| 38 | 119.147 | 1383895 | Intermediate Synchro Ring | 1 | (G) | ● | ● | | |
| 38 | 119.235 | 1466318 | Intermediate Synchro Ring | 1 | (H) | ● | ● | | |
| 39 | 160.193 | 1340002 | Pin | 8 | | ● | ● | | |
| 40 | 111.197 | 383138 | Lock Ring | 8 | | ● | ● | | |
| 41 | 119.146 | 1401620 | Synchronizer Ring | 1 | (G)(1) New Style 12 Fins | ● | ● | | |
| 41 | 119.202 | 1529950 | Synchronizer Ring | 1 | (H) | ● | ● | | |
| 42 | 169.740 | 1401622 | Driver Plate | 1 | (G)(1) New Style 12 Fins | ● | ● | | |
| 42 | 169.848 | 1533848 | Driver Plate | 1 | (H) | ● | ● | | |
| 43 | 157.553 | 1405981 | Synchronizer Hub | 1 | | ● | ● | | |
| 44 | 154.196 | 371692 | Sliding Sleeve | 1 | (G) | ● | ● | | |
| 44 | 154.386 | 1529939 | Sliding Sleeve | 1 | (H) | ● | ● | | |
| 45 | 111.237 | 395759 | Ring | 1 | | ● | ● | | |
| 46 | 160.198 | 374334 | Roller | 4 | | ● | ● | | |
| 47 | 160.199 | 369910 | Pin | 4 | | ● | ● | | |
| 48 | 156.177 | 369911 | Spring | 4 | | ● | ● | | |
| 49 | 157.668 | 378627 | Fixed Hub | 1 | | ● | ● | | |
| 50 | 154.330 | 378646 | Sliding Sleeve | 1 | | ● | ● | | |
| 51 | 147.208 | 378633 | Reverse Gear 36 T | 1 | | ● | ● | | |
| 52 | 117.365 | 1304853 | Bush | 1 | | ● | ● | | |
| 53 | 130.528 | 1327878 | Bearing D.65x150x40 | 1 | Oem | ● | ● | | |
| 53 | 530.528 | 1327878 | Bearing D.65x150x40 | 1 | A.Market | ● | ● | | |
| 54 | 169.910 | 1113910 | Spacer | 1 | | ● | ● | | |
| 55 | 109.190 | 1304850 | Synchronizer Cone | 1 | (*) Old Generation | ● | ● | | |
| 55 | 109.420 | 1789444 | Synchronizer Cone | 1 | (*) New Generation | ● | ● | | |
| 55 | 109.755 | 1883354 | Synchronizer Cone | 1 | (@) Latest Generation | ● | ● | | |
| 56 | 157.549 | 1459308 | Sun Gear 24 T | 1 | | ● | | | |
| 56 | 157.554 | 1459309 | Sun Gear 24 T | 1 | | | ● | | |
| 57 | 187.648 | 1461417 | Nut | 1 | | ● | | | |
| 57 | 187.649 | 1461416 | Nut | 1 | | | ● | | |
| 58 | 189.616 | 1314986 | Oil Plug | 1 | (C) | ● | ● | | |
| 58 | 189.617 | 1387297 | Oil Plug | 1 | (D) | ● | ● | | |
| 59 | 198.845 | 1335671 | Fork | 1 | | ● | ● | | |
| 60 | 149.261 | 1335174 | Rod | 1 | | ● | ● | | |
| 61 | 132.059 | 1305977 | Intermediate Element | 1 | | ● | ● | | |
| 62 | 189.620 | 1337894 | Piston | 1 | | ● | ● | | |
| 63 | 132.060 | 1345149 | Cylinder | 1 | | ● | ● | | |
| 64 | 280.548 | 1488083 | Solenoid Valve | 1 | | ● | ● | | |
| 65 | 141.172 | 1423484 | Slide | 2 | Standard | ● | ● | | |
| 65 | 141.173 | 1423485 | Slide | 2 | Size -0,2 | ● | ● | | |

Notes

(A) Up to Gearbox 6745013 (B) From Gearbox 6745014 (C) Up to Gearbox 6757126
 (D) From Gearbox 6757127 (E) Up to Gearbox 6932500 (F) From Gearbox 6932501

(G - H) To be coupled together

(I) Old style with 4 fins not listed in the catalogue. The old ring 391804 (fig.42) and the old Synchro ring 373272 (fig.41) can be replaced by:
 1 pc. 169.740 - 1401622 (Fig.42) + 1 pc. 119.146 - 1401620 (Fig.41)

(*) Old and New Generation. Can be replaced by Synchro rebuilt kit 298.188 (Latest Gen.) shown in the next table.

(@) LATEST GENERATION. To be coupled together.

Date

05 / 2010

Table

0130

Adattabile a : **SCANIA** **GRS890 - GRS890R** (W/Retarder)
 Suitable To :

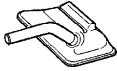
Oil Seal & Gasket Kit
88 - 89 - 90



Oil Pump
83



Oil Filter
84

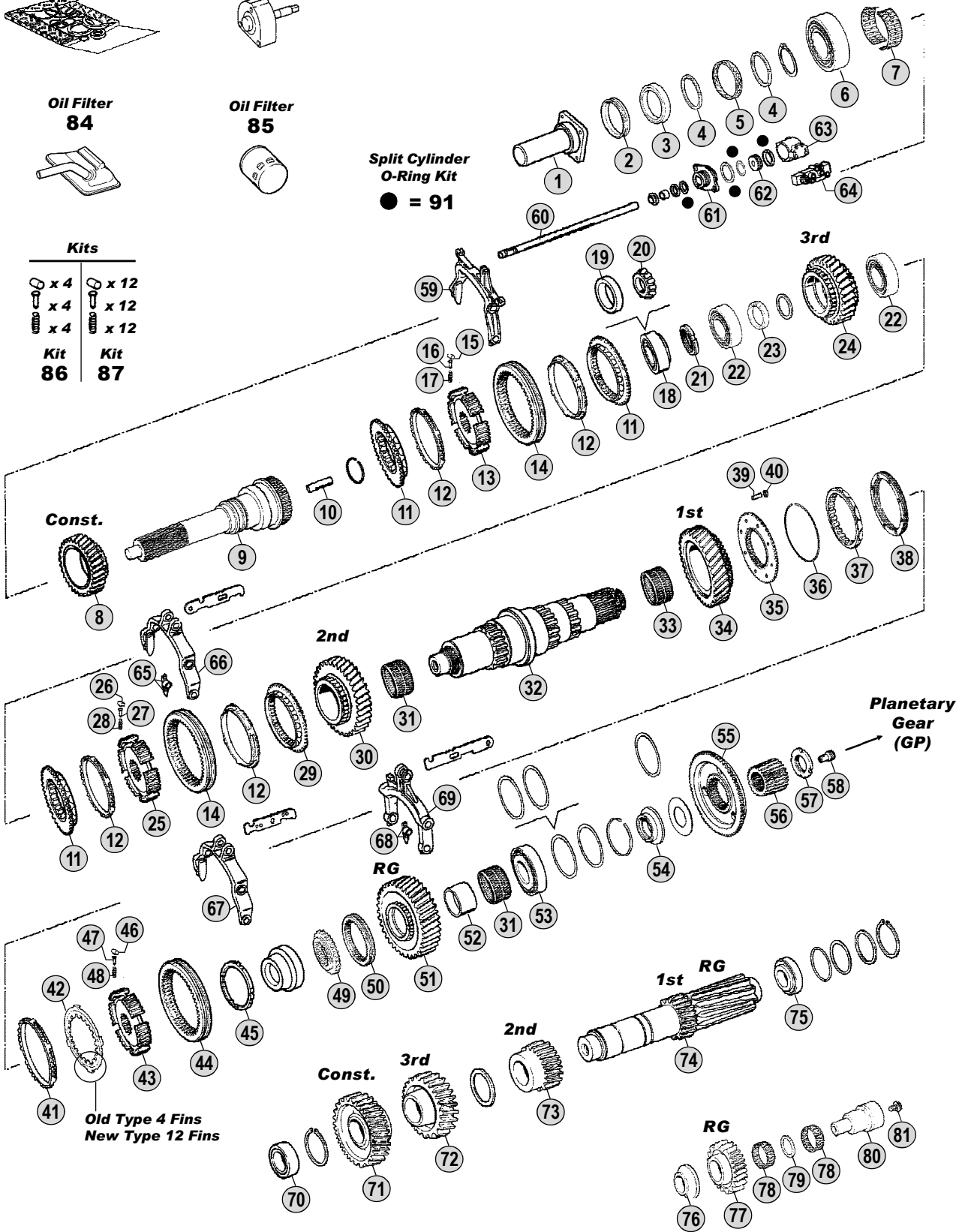


Oil Filter
85



Split Cylinder
O-Ring Kit
 ● = 91

| Kits | |
|-------------------------|-------------------------|
| x 4 | x 12 |
| x 4 | x 12 |
| x 4 | x 12 |
| Kit 86 | Kit 87 |



All original equipment manufacturer's numbers, symbols, pictures and description used in this catalogue are for reference only, and it is not implied that any part listed is the product of these manufactures. Tutti i nostri particolari non sono originali ma con essi intercambiabili. I riferimenti originali, le figure, i modelli sono esposti a semplice titolo indicativo. La nostra produzione riporta il nostro marchio.

Models

Serie 4

94C - 94D - 94G - 94L

114C - 114G - 114L - 124C - 124G - 124L



| Fig. | CEI no. | Rif. SCANIA | Description | Q.ty | Note | GRS890 | GRS890R | | | |
|------|---------|-------------|-----------------------------|------|----------------|--------|---------|--|--|--|
| 65 | 141.164 | 1423486 | Slide | 2 | Size +0,2 | ● | ● | | | |
| 66 | 141.177 | 1301860 | Fork | 1 | | ● | ● | | | |
| 67 | 141.177 | 1301860 | Fork | 1 | (E) | ● | ● | | | |
| 67 | 141.178 | 1479151 | Fork | 1 | (F) | ● | ● | | | |
| 68 | 141.179 | 1423958 | Slide | 2 | | ● | ● | | | |
| 69 | 141.180 | 1305971 | Fork | 1 | | ● | ● | | | |
| 70 | 130.295 | 1903570 | Bearing D.50x100x37,65 | 1 | Oem | ● | ● | | | |
| 70 | 530.295 | 1903570 | Bearing D.50x100x37,65 | 1 | A.Market | ● | ● | | | |
| 71 | 146.496 | 1116469 | Constant Gear 38 T | 1 | | ● | ● | | | |
| 72 | 146.547 | 1116471 | Gear 3rd Speed | 1 | (A) | ● | ● | | | |
| 72 | 146.430 | 1367796 | Gear 3rd Speed 34 T | 1 | (B) | ● | ● | | | |
| 73 | 146.497 | 1116473 | Gear 2nd Speed 24 T | 1 | | ● | ● | | | |
| 74 | 105.125 | 1373173 | Countershaft 17/12 T | 1 | (E) | ● | ● | | | |
| 74 | 105.126 | 1393880 | Countershaft 19/12 T | 1 | (F) | ● | ● | | | |
| 75 | 130.532 | 1357711 | Bearing 60X130X33,5 | 1 | Oem | ● | ● | | | |
| 75 | 530.532 | 1357711 | Bearing 60X130X33,5 | 1 | A.Market | ● | ● | | | |
| 76 | 169.907 | 378614 | Washer | 1 | | ● | ● | | | |
| 77 | 147.209 | 380110 | Reverse Gear | 1 | | ● | ● | | | |
| 78 | 137.172 | 378615 | Needle Cage D.50x62x21,5 | 2 | | ● | ● | | | |
| 79 | 169.908 | 380109 | Spacer | 1 | | ● | ● | | | |
| 80 | 147.203 | 1510337 | Reverse Pin | 1 | | ● | ● | | | |
| 81 | 187.650 | 812534 | Screw | 1 | | ● | ● | | | |
| 83 | 280.540 | 1426449 | Oil Pump | 1 | | ● | ● | | | |
| 84 | 280.611 | 1307097 | Oil Filter | 1 | | ● | ● | | | |
| 85 | 280.612 | 1768402 | Oil Filter | 1 | | ● | ● | | | |
| 86 | 198.847 | CEI 198847 | Roller-Pins and Springs kit | 1 | | ● | ● | | | |
| 87 | 198.848 | CEI 198848 | Roller-Pins and Springs kit | 1 | | ● | ● | | | |
| 88 | 198.850 | CEI 198850 | Gasket kit | 1 | Only gaskets | ● | ● | | | |
| 89 | 198.851 | CEI 198851 | Oil Seals Kit | 1 | Only oil seals | ● | ● | | | |
| 90 | 198.846 | 550577 | Oil Seal and Gasket Kit | 1 | Complete | ● | ● | | | |
| 91 | 198.956 | CEI 198956 | Split Cylinder O-Ring Kit | 1 | | ● | ● | | | |

All original equipment manufacturer's numbers, symbols, pictures, models and description used in this catalogue are for reference only, and it is not implied that any part listed is the product of these manufacturers. Tutti i nostri particolari non sono originali ma con essi intercambiabili. I riferimenti originali, le figure, i modelli sono esposti a semplice titolo indicativo. La nostra produzione riporta il nostro marchio.

Notes

(A) Up to Gearbox 6745013 (B) From Gearbox 6745014 (C) Up to Gearbox 6757126
 (D) From Gearbox 6757127 (E) Up to Gearbox 6932500 (F) From Gearbox 6932501

(G - H) To be coupled together

(I) Old style with 4 fins not listed in the catalogue. The old ring 391804 (fig.42) and the old Synchro ring 373272 (fig.41) can be replaced by:
 1 pc. 169.740 - 1401622 (Fig.42) + 1 pc. 119.146 - 1401620 (Fig.41)

(*) Old and New Generation. Can be replaced by Synchro rebuilt kit 298.188 (Latest Gen.) shown in the next table.

(@) LATEST GENERATION. To be coupled together.

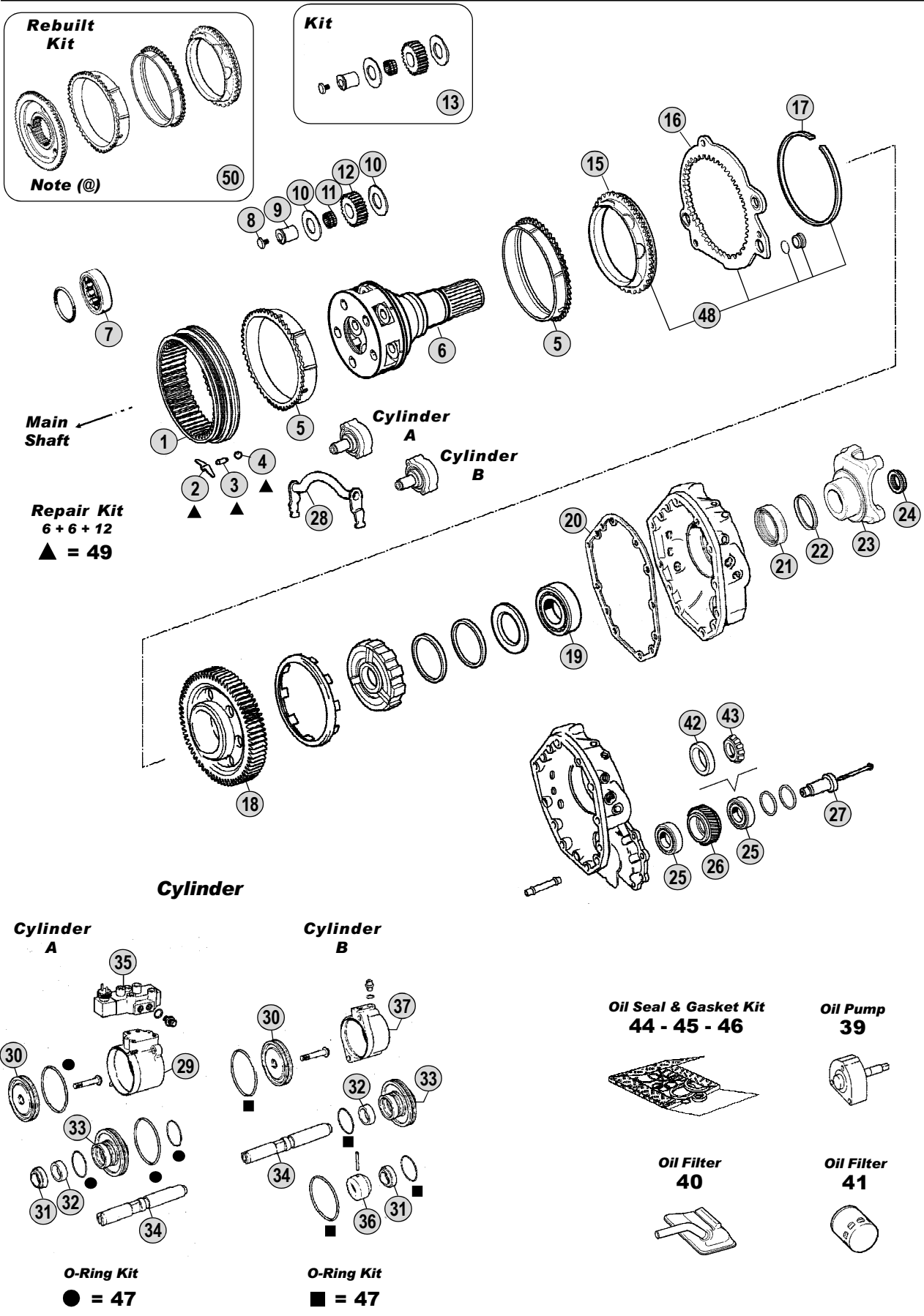
Date

05 / 2010

Table

0130

Adattabile a : **SCANIA** **GRS890 - GRS890R** (W/Retarder)
Suitable To :



All original equipment manufacturers numbers, symbols, pictures, models and description used in this catalogue are for reference only, and it is not implied that any part listed is the product of these manufacturers. Tutti i nostri particolari non sono originali ma con essi intercambiabili. I riferimenti originali, le figure, i modelli sono esposti a semplice titolo indicativo. La nostra produzione riporta il nostro marchio.

Models

Serie 4

94C - 94D - 94G - 94L

114C - 114G - 114L - 124C - 124G - 124L



| Fig. | CEI no. | Rif. SCANIA | Description | Q.ty | Note | GRS890 | GRS890R | | | |
|------|---------|-------------|-------------------------|------|-----------------------|--------|---------|--|--|--|
| 1 | 123.216 | 1118030 | Crown Gear 66 T | 1 | | ● | ● | | | |
| 2 | 156.185 | 1395039 | Spring | 6 | | ● | ● | | | |
| 3 | 160.215 | 1332508 | Pin | 6 | | ● | ● | | | |
| 4 | 160.216 | 871702 | Ball | 12 | | ● | ● | | | |
| 5 | 119.121 | 1395624 | Synchronizer Ring | 2 | (*) Old Generation | ● | ● | | | |
| 5 | 119.249 | 1770058 | Synchronizer Ring | 2 | (*) New Generation | ● | ● | | | |
| 5 | 119.288 | 1883363 | Synchronizer Ring | 2 | (@) Latest Generation | ● | ● | | | |
| 6 | 190.332 | 1318221 | Planetary Carrier | 1 | Complete | ● | | | | |
| 6 | 190.333 | 1318225 | Planetary Carrier | 1 | Complete | | ● | | | |
| 7 | 130.622 | 1300596 | Bearing | 1 | | | ● | | | |
| 8 | 187.606 | 1318714 | Screw | 5 | | ● | ● | | | |
| 9 | 107.171 | 1318713 | Pin | 5 | | ● | ● | | | |
| 10 | 169.796 | 389419 | Washer | 10 | | ● | ● | | | |
| 11 | 137.168 | 389434 | Needle Bearing | 5 | | ● | ● | | | |
| 12 | 157.199 | 1373174 | Planet Pinion 20 T | 5 | | ● | ● | | | |
| 13 | 198.849 | CEI 198849 | Repair kit | 5 | | ● | ● | | | |
| 15 | 109.168 | 1323147 | Synchronizer Cone | 1 | (*) Old Generation | ● | ● | | | |
| 15 | 109.421 | 1788170 | Synchronizer Cone | 1 | (*) New Generation | ● | ● | | | |
| 15 | 109.756 | 1883350 | Synchronizer Cone | 1 | (@) Latest Generation | ● | ● | | | |
| 16 | 135.126 | 1323145 | Saddle Plate | 1 | | ● | ● | | | |
| 17 | 111.207 | 1302665 | Snap Ring | 1 | | ● | ● | | | |
| 18 | 145.743 | 1426758 | Retarder Gear 70 T | 1 | | | ● | | | |
| 19 | 130.533 | 1783324 | Bearing D.60x130x31 | 1 | | ● | ● | | | |
| 20 | 139.574 | 1305139 | Gasket | 1 | | ● | ● | | | |
| 21 | 139.568 | 1502384 | Oil Seal 85x105x13 | 1 | | ● | ● | | | |
| 22 | 139.481 | 1300977 | Dust Cover | 1 | | ● | ● | | | |
| 23 | 197.106 | 1340753 | Output Flange | 1 | P30/300 | ● | ● | | | |
| 23 | 155.198 | 1422427 | Output Flange | 1 | P40/400 | ● | ● | | | |
| 23 | 197.107 | 1422430 | Output Flange | 1 | P50/P500 | ● | ● | | | |
| 23 | 197.076 | 1319646 | Output Flange | 1 | P60/P600 | ● | ● | | | |
| 24 | 187.486 | 1525988 | Nut M44x1,5 | 1 | | ● | ● | | | |
| 25 | 130.621 | 361043 | Bearing 40x85x33 | 2 | Oem Old Type | | ● | | | |
| 25 | 530.621 | 361043 | Bearing 40x85x33 | 2 | A.Market Old Type | | ● | | | |
| 26 | 145.744 | 1373704 | Gear 34 T | 1 | | | ● | | | |
| 27 | 107.188 | 1304747 | Pin | 1 | | | ● | | | |
| 28 | 141.175 | 1491403 | Fork | 1 | | ● | ● | | | |
| 29 | 132.056 | 1484808 | Cylinder | 1 | | ● | ● | | | |
| 30 | 189.618 | 1303960 | Piston | 2 | | ● | ● | | | |
| 31 | 139.601 | 1515869 | Oil Seal Ring 22X28X5/8 | 2 | | ● | ● | | | |
| 32 | 117.362 | 1303799 | Bush | 2 | | ● | ● | | | |
| 33 | 132.057 | 1321239 | Intermediate Element | 2 | | ● | ● | | | |
| 34 | 107.189 | 1332131 | Shaft | 2 | | ● | ● | | | |
| 35 | 280.548 | 1488083 | Solenoid Valve | 1 | | ● | ● | | | |
| 36 | 117.363 | 1337828 | Sleeve | 1 | | ● | ● | | | |
| 36 | 117.364 | 1382339 | Sleeve | 1 | | ● | ● | | | |

Notes

(*) Old and New Generation. Can be replaced by Synchro rebuilt kit 298.188 (Fig.50).
 (@) LATEST GENERATION. To be coupled together.

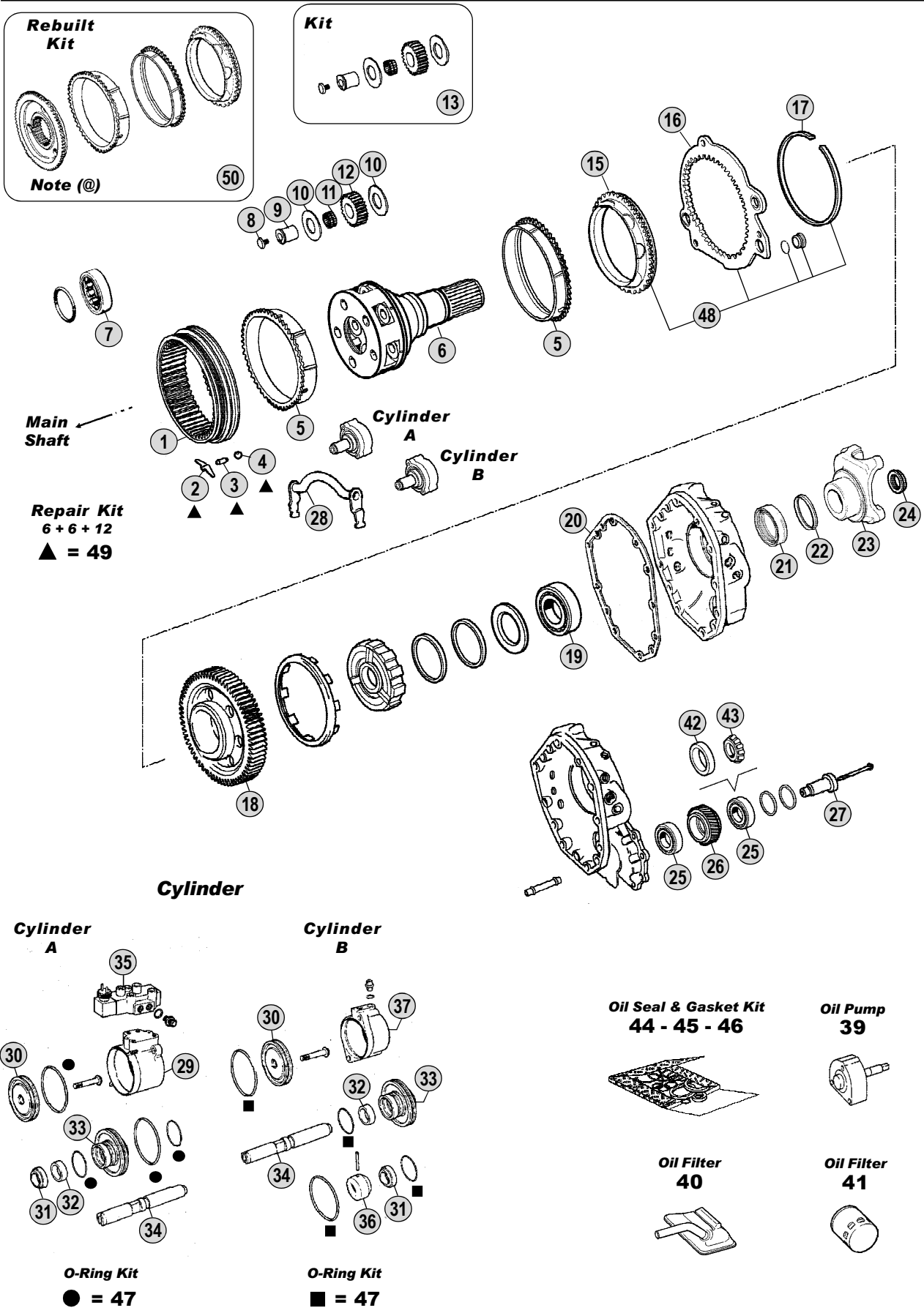
Date

05/ 2010

Table

0135

Adattabile a : **SCANIA GRS890 - GRS890R (W/Retarder)**
Suitable To :



All original equipment manufacturer's numbers, symbols, pictures, models and description used in this catalogue are for reference only, and it is not implied that any part listed is the product of these manufacturers. Tutti i nostri particolari non sono originali ma con essi intercambiabili. I riferimenti originali, le figure, i modelli sono esposti a semplice titolo indicativo. La nostra produzione riporta il nostro marchio.

Models

Serie 4

94C - 94D - 94G - 94L

114C - 114G - 114L - 124C - 124G - 124L



