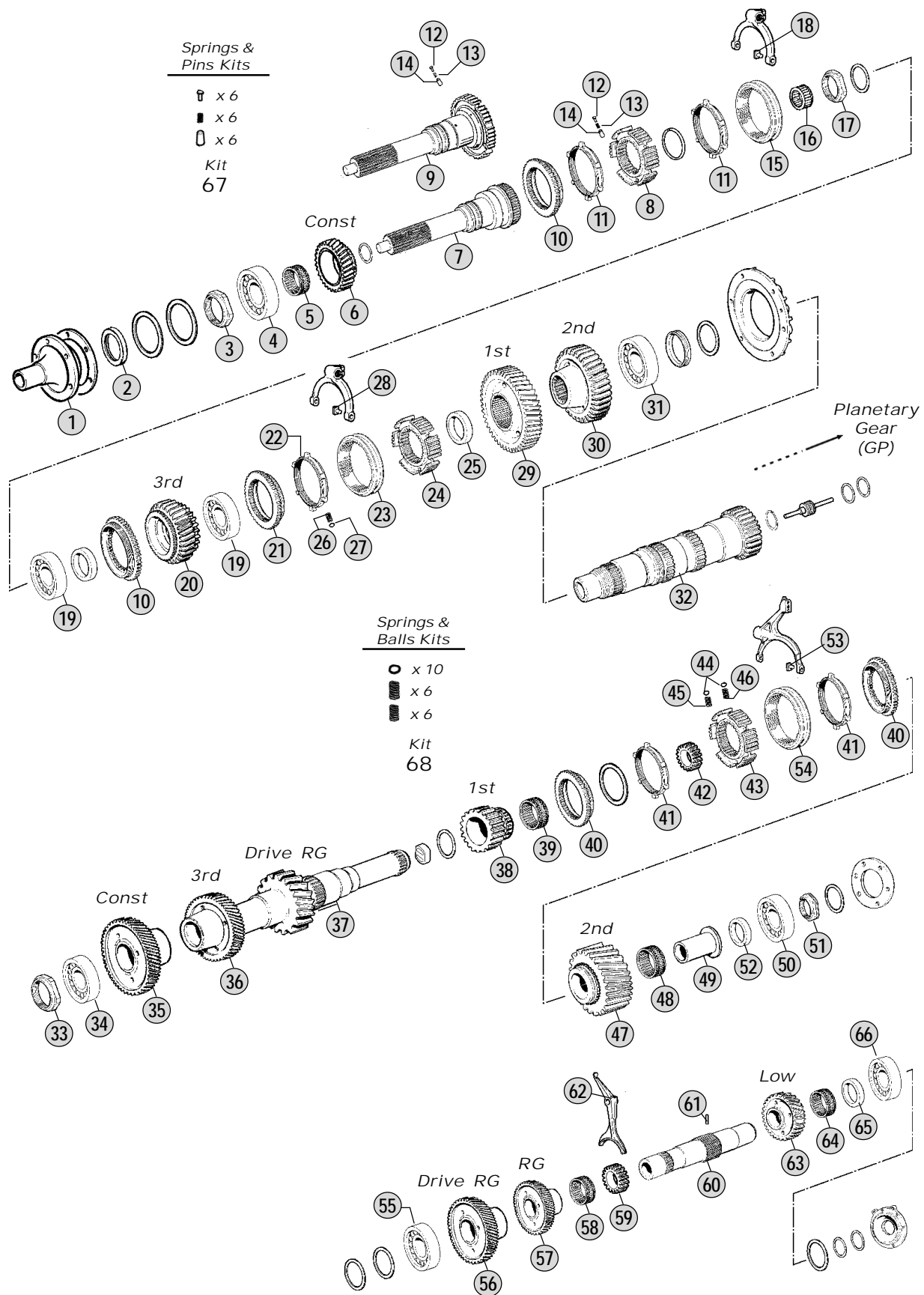


Adattabile a : **VOLVO**
 Suitable To :

Modelli Cambio/ Gearbox Models
SR70 - SR71



All original equipment manufacturers' numbers, symbols, pictures, models and description used in this catalogue are for reference only, and it is not implied that any part listed is the product of these manufactures. Tutti i nostri particolari non sono originali ma con essi intercambiabili. I riferimenti originali, le figure, i modelli sono esposti a serrapice titolo indicativo. La nostra produzione riporta il nostro marchio.

Models

SR70	F12 - N12
SR71	F12 - N12

Fig.	CEI no.	Rif. VOLVO	Description	Q.ty	Note	SR70	SR71			
1	128.258	267965	Front Cover	1		●	●			
2	139.913	948826	Oil Seal	1		●	●			
3	287.092	1526145	Nut	1		●	●			
4	130.929	1527268	Bearing	1		●	●			
5		1526184	Needle Bearing	1		●	●			
6		1655310	Constant Gear 30 T	1		●	●			
7	102.538	1526546	Input Shaft	1	Old Type - Repl.by 1 pc.fig.9	●	●			
8		266926	Synchronizer Hub	1	Old Type -Repl.by 1 pc.fig.9	●	●			
9	102.405	1527080	Input Shaft	1	New Type Assy	●	●			
10	109.087	266925	Synchronizer cone	2		●	●			
11	119.177	266920	Synchronizer Ring (Steel)	2		●	●			
12	160.256	266898	Pin	6		●	●			
13	156.197	267848	Spring	6		●	●			
14	160.257	1527391	Pin	6		●	●			
15	154.115	267234	Sliding Sleeve	1		●	●			
16		1526385	Bearing	1		●	●			
17	187.610	8171334	Grooved Nut	1		●	●			
18	141.045	382565	Sliding Block	2		●	●			
19		183766	Bearing	2		●	●			
20	145.903	1527394	Gear 30 T	1		●	●			
21	109.088	267242	Synchronizer Cone	1		●	●			
22	119.114	1527403	Synchronizer Ring	1		●	●			
23	154.114	266994	Sliding Sleeve	1		●	●			
24		266995	Synchronizer Hub	1		●	●			
25	117.461	266949	Bush	1		●	●			
26		267800	Spring	6		●	●			
27		181445	Ball	6		●	●			
28	141.045	382565	Sliding Block	2		●	●			
29	146.273	266948	Gear 1st Speed 39 T	1		●	●			
30	146.274	266947	Gear 2nd Speed 33 T	1		●	●			
31	130.928	1527413	Bearing	1		●	●			
32	103.199	266946	Main Shaft	1		●	●			
33		1527241	Nut	1		●	●			
34		20428192	Bearing	1		●	●			
35	146.275	266955	Constant Gear 47 T	1		●	●			
36		1527441	Gear 38 T	1		●	●			
37	105.276	1527392	Countershaft	1		●	●			
37	105.277	1655153	Countershaft	1			●			
38	145.350	266957	Gear 1st Speed 24 T	1		●	●			
39		1527316	Needle Bearing	1		●	●			
40	109.086	266923	Synchronizer Cone	2		●	●			
41	119.114	1527403	Synchronizer Ring	2		●	●			
42		1527240	Hub	1		●	●			
43	155.110	266921	Synchronizer Hub	1		●	●			
44	171.014	190288	Ball D.6	10		●	●			

Notes

Date

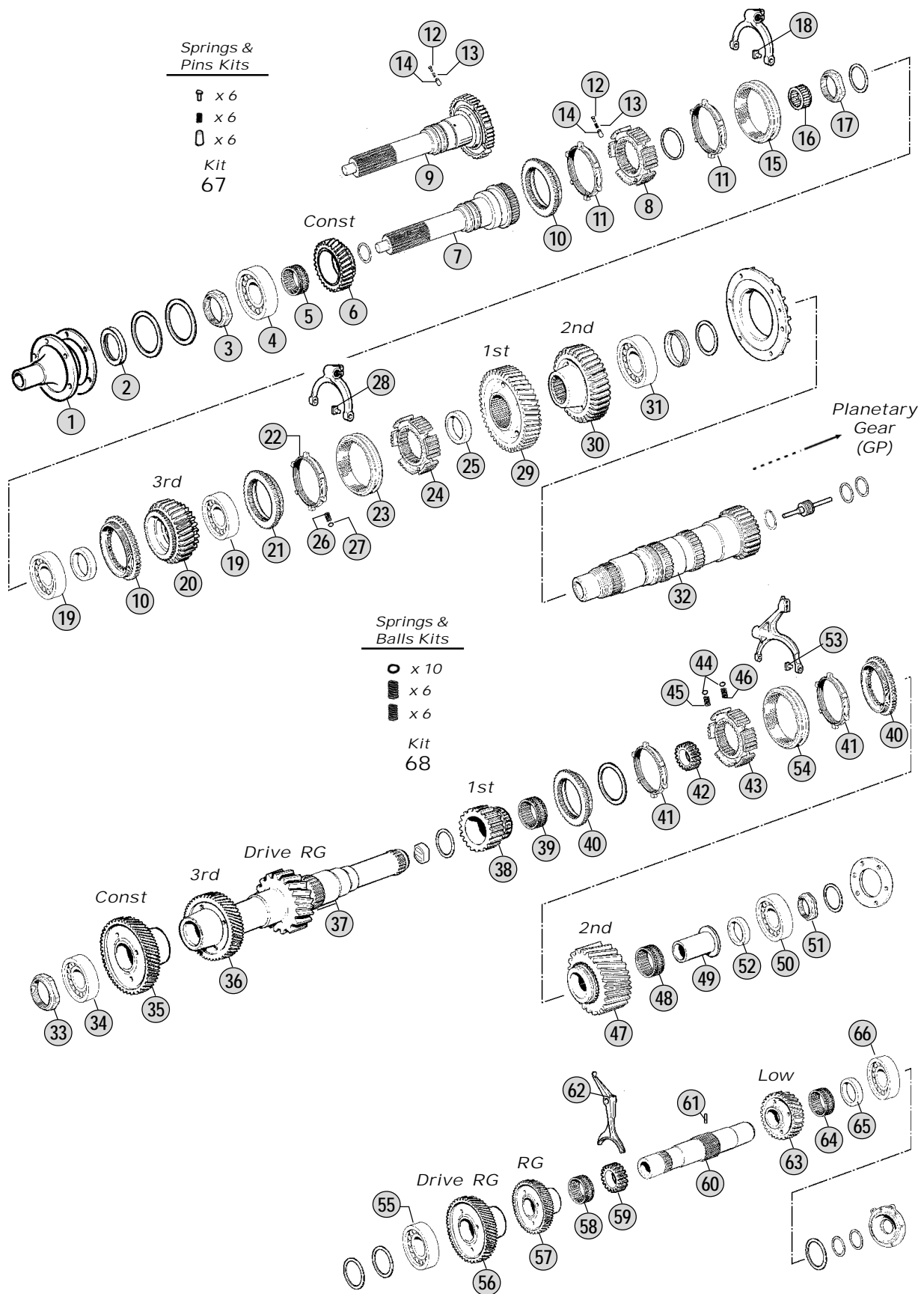
04 / 2012

Table

050

Adattabile a : **VOLVO**
 Suitable To :

Modelli Cambio/ Gearbox Models
SR70 - SR71



All original equipment manufacturers' numbers, symbols, pictures, models and description used in this catalogue are for reference only, and it is not implied that any part listed is the product of these manufactures. Tutti i nostri particolari non sono originali ma con essi intercambiabili. I riferimenti originali, le figure, i modelli sono esposti a serrapice titolo indicativo. La nostra produzione riporta il nostro marchio.

Models

SR70	F12 - N12
SR71	F12 - N12

Fig.	CEI no.	Rif. VOLVO	Description	Q.ty	Note		SR70	SR71		
45	156.108	1667511	Spring D.5,85x17,50	6		●	●			
46	156.117	382127	Spring De.5,85x25	2		●	●			
47	145.351	266958	Gear 2nd Speed 27 T	1		●	●			
48		1527316	Needle Bearing	1		●	●			
49	117.462	21 416 557	Bush	1		●	●			
50		20428192	Bearing	1		●	●			
51		1527245	Nut	1		●	●			
52		1527814	Washer	1		●	●			
53	141.045	382565	Sliding Block	2		●	●			
54	154.113	266922	Sliding Sleeve	1		●	●			
55		183430	Bearing	1		●	●			
56		266962	Gear	1		●				
56		1655123	Gear	1			●			
57		266960	Gear	1		●	●			
58		1526391	Needle Bearing	1		●	●			
59	157.225	266961	Sliding Sleeve	1		●	●			
60		266959	Reverse Shaft	1	Old Type W/out pin (Fig.61)	●	●			
60		1655169	Reverse Shaft	1	New Type with pin (Fig.61)	●	●			
61		968916	Pin	1		●	●			
62	141.187	267892	Reverse Fork	1		●	●			
63		267810	Gear	1		●	●			
64		1526391	Needle Bearing	1		●	●			
65		266622	Washer	1		●	●			
66		183430	Bearing	1		●	●			
67	298.136	CEI 298136	Pins/Springs Kit	1	(Fig.12+Fig.13+Fig.14)	●	●			
68	198.891	CEI 198891	Springs/Balls Kit	1	(Fig.44+Fig.45+Fig.46)	●	●			

Notes

Date

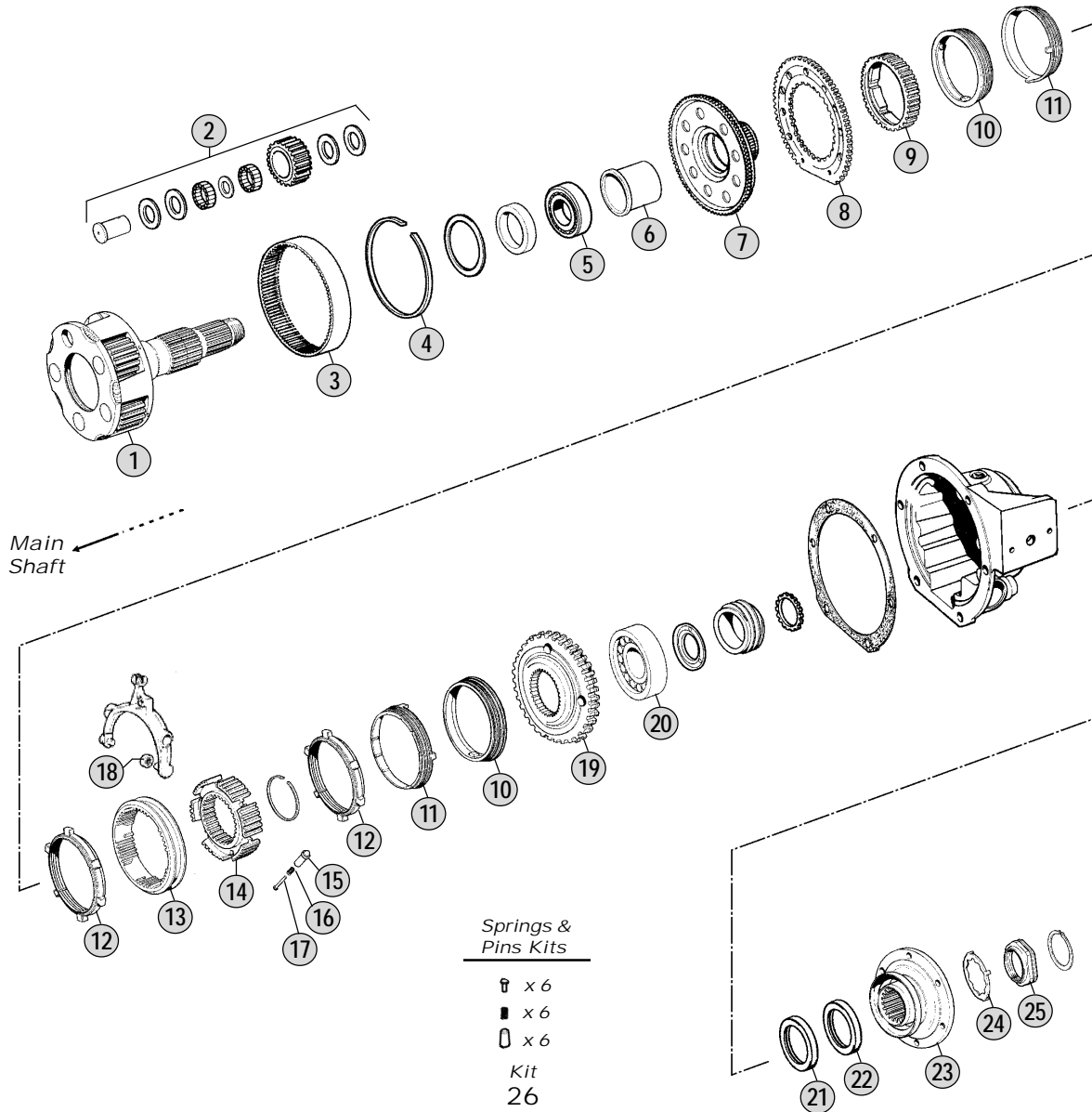
04 / 2012

Table

050

Adattabile a : **VOLVO**
 Suitable To :

Modelli Cambio/ Gearbox Models
 R70 - SR70 - SR71



All original equipment manufacturers' numbers, symbols, models and description used in this catalogue are for reference only, and it is not implied that any part listed is the product of these manufactures. Tutti i nostri particolari non sono originali ma con essi intercambiabili. I riferimenti originali, le figure, i modelli sono esposti a semplice titolo indicativo. La nostra produzione riporta il nostro marchio.

Models

R70	F12 - N12
SR70	F12 - N12
SR71	F12 - N12

Fig.	CEI no.	Rif. VOLVO	Description	Q.ty	Note	R70	SR70	SR71		
1		1526277	Planetary Carrier	1	Empty	●	●	●		
2		273781	Repair Kit	1	5 Series per Kit	●	●	●		
3	123.324	266966	Crown Gear	1		●	●	●		
4	111.396	266924	Ring	1		●	●	●		
5		267974	Bearing	1		●	●	●		
6	117.463	267976	Bush	1		●	●	●		
7		266967	Flange Gear	1		●	●	●		
8		267960	Flange Gear Support	1		●	●	●		
9	109.842	267809	Engaging Ring	1		●	●	●		
10	119.192	1527429	Synchronizer Ring	2		●	●	●		
11	119.193	1527404	Synchronizer Ring	2		●	●	●		
12	119.194	1655129	Synchronizer Ring	2		●	●	●		
13	154.384	267807	Sliding Sleeve	1		●	●	●		
14		266598	Synchronizer Hub	1		●	●	●		
15	160.258	267419	Pin	6		●	●	●		
16	156.198	1526260	Spring	6		●	●	●		
17	160.169	266899	Pin	6		●	●	●		
18		1527513	Roller	2		●	●	●		
19	109.843	1527053	Engaging Ring	1		●	●	●		
20	130.680	184413	Bearing 85x150x28	1		●	●	●		
21		1669618	Oil Seal	1		●	●	●		
22	139.561	1652622	Oil Seal 90x111x6/8	1		●	●	●		
23	197.094	1524358	Output Flange D.203	1		●	●	●		
23	197.227	1523272	Output Flange	1		●	●	●		
24	169.804	1523318	Thrust Washer	1		●	●	●		
24		1523319	Lock Washer	1		●	●	●		
25	187.610	8171334	Grooved Nut	1		●	●	●		
26	298.137	CEI 298137	Pins/Springs Kit	1		●	●	●		

Notes

Date

04 / 2012

Table

060

All original equipment manufacturers' numbers, symbols, pictures, models and description used in this catalogue are for reference only, and it is not implied that any part listed is the product of these manufactures.
Tutti i nostri particolari non sono originali ma con essi intercambiabili. I riferimenti originali, le figure, i modelli sono esposti a semplice titolo indicativo. La nostra produzione riporta il nostro marchio.