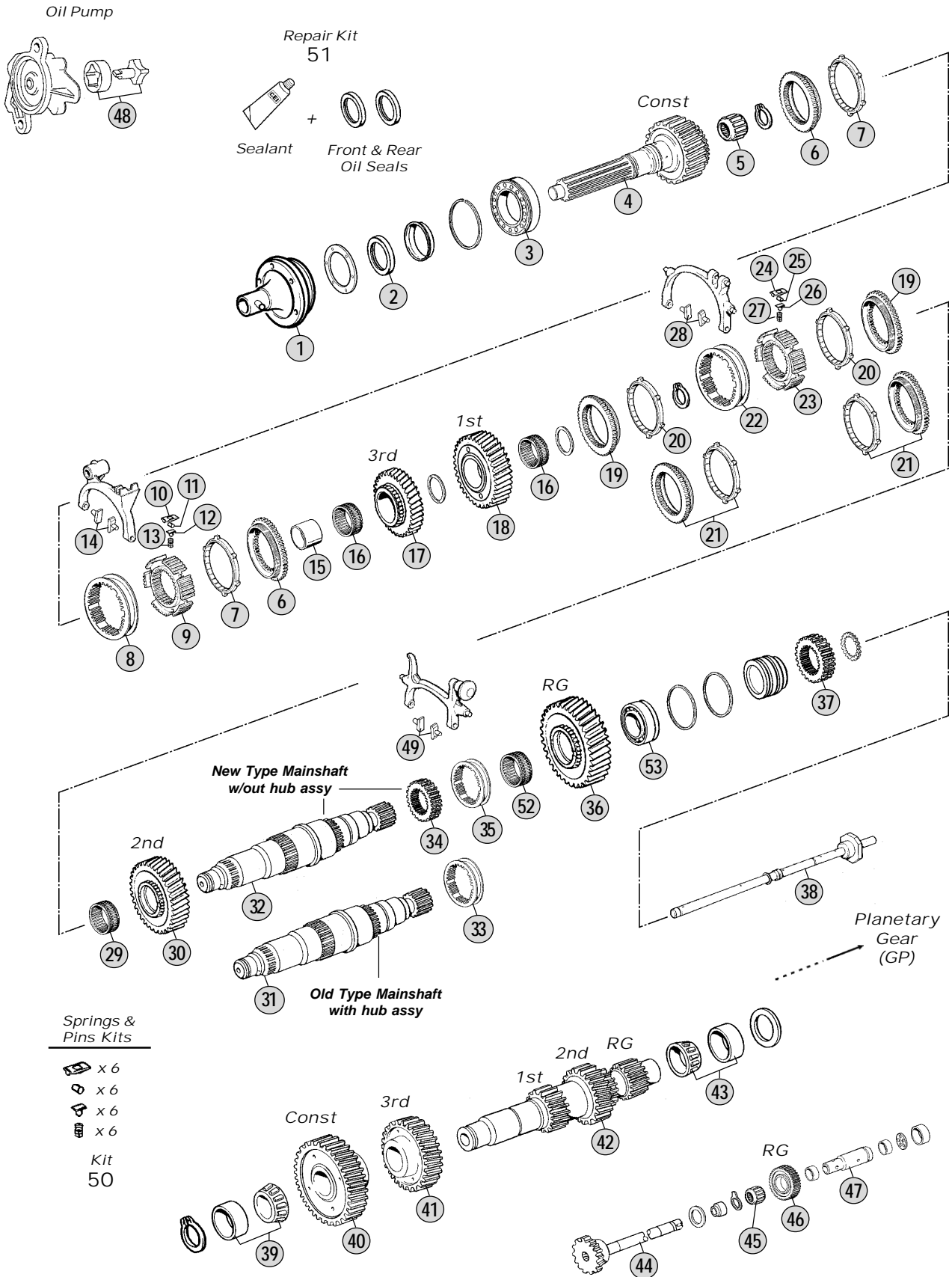


Adattabile a : **VOLVO**
Suitable To :



All original equipment manufacturers' numbers, symbols and description used in this catalogue are for reference only, and it is not implied that any part listed is the product of these manufacturers. Tutti i nostri particolari non sono originali ma con essi intercambiabili. I riferimenti originali, le figure, i modelli sono esposti a semplice titolo indicativo. La nostra produzione riporta il nostro marchio.

Models

G7 Buses B10B - B10BLE - B10M - B12(BR)

G8 Buses B7F - B7R - B10R(BR) - B10BLE - B10M B12

Fig.	CEI no.	Rif. VOLVO	Description	Q.ty	Note	G7	G8			
1	135.136	1656121	Front Cover	1		●	●			
2	139.391	267268	Oil Seal 65x90x10 B1SL	1		●	●			
3	130.570	18459	Bearing 85x150x30,5	1		●	●			
4	102.291	1672236	Input shaft 33 T	1		●	●			
5	130.591	184679	Bearing	1	Up to Gearbox 3396	●	●			
5	130.568	1656104	Bearing 45x35	1	From Gearbox 3397	●	●			
6	109.116	1653920	Synchronizer Cone	2		●	●			
7	119.139	1653960	Synchronizer Ring	2		●	●			
8	154.132	1653240	Sliding Sleeve	1		●	●			
8	154.345	1653940	Sliding Sleeve	1	Old-Repl.by 1653240+1668213	●	●			
9	155.171	1668213	Synchronizer Hub	1		●	●			
10	160.200	1653990	Slide	6		●	●			
11	160.202	1653900	Pin	6		●	●			
12	160.201	1668280	Slide	6		●	●			
13	156.179	1653901	Spring	6		●	●			
14	141.045	382565	Sliding Block	2		●	●			
15	117.328	1655569	Bush	1		●	●			
16	137.197	1655563	Needle Cage	2		●	●			
17	145.624	1672238	Gear 3r Speed 37 T	1		●	●			
18	244.090	1669416	Gear 1st Speed 44 T	1	(C) Old Type	●	●			
18	145.625	1673853	Gear 1st Speed 44 T	1	(D) New Type	●	●			
19	109.115	1653924	Synchronizer Cone	2	(A)	●	●			
20	119.140	1653964	Synchronizer Ring	2	(A)	●	●			
21	198.806	1669360	Synchro kit 1st/2nd Speed	2	(B)	●	●			
22	154.133	1668244	Sliding Sleeve	1	(A)	●	●			
22	154.344	1653944	Sliding Sleeve 1st-2nd Speed	1	(A) Old-Repl.by 1668244+1668214	●	●			
22	154.300	1669034	Sliding Sleeve	1	(B)	●	●			
23	155.172	1668214	Synchronizer Hub	1		●	●			
24	160.200	1653990	Slide	6		●	●			
25	160.202	1653900	Pin	6		●	●			
26	160.201	1668280	Slide	6		●	●			
27	156.179	1653901	Spring	6		●	●			
28	141.045	382565	Sliding Block	2		●	●			
29	137.196	1652575	Needle Cage 90x98x45,50	1		●	●			
30	145.482	1653376	Gear 2nd Speed 39 T	1		●	●			
31	103.156	1668065	Main Shaft	1	Old Type with RG hub assy	●	●			
32	103.152	20366733	Main Shaft 34/42/28/28 T	1	New Type W/out RG hub assy	●	●			
33	154.192	1656266	Sliding Sleeve	1	(1) Old Type	●	●			
34	157.185	20366731	Fixed Hub	1	New Type	●	●			
35	154.198	20366826	Sliding Sleeve	1	New Type	●	●			
36	147.168	1669450	Reverse gear 43 T	1		●	●			
37	157.610	1656226	Sun Gear 24 T	1		●	●			
38	188.182	1668074	Oil Tube	1		●	●			
39	130.565	1652563	Bearing Cone 110x60x39,50	1		●	●			
40	146.508	1672237	Constant Gear 42 T	1		●	●			

Notes

- (A) Use items marked (A) together
 (B) Use items marked (B) together
 (C) Old Type (D) New Type with helical RG
 (1) Old type having Mainshaft with hub assy

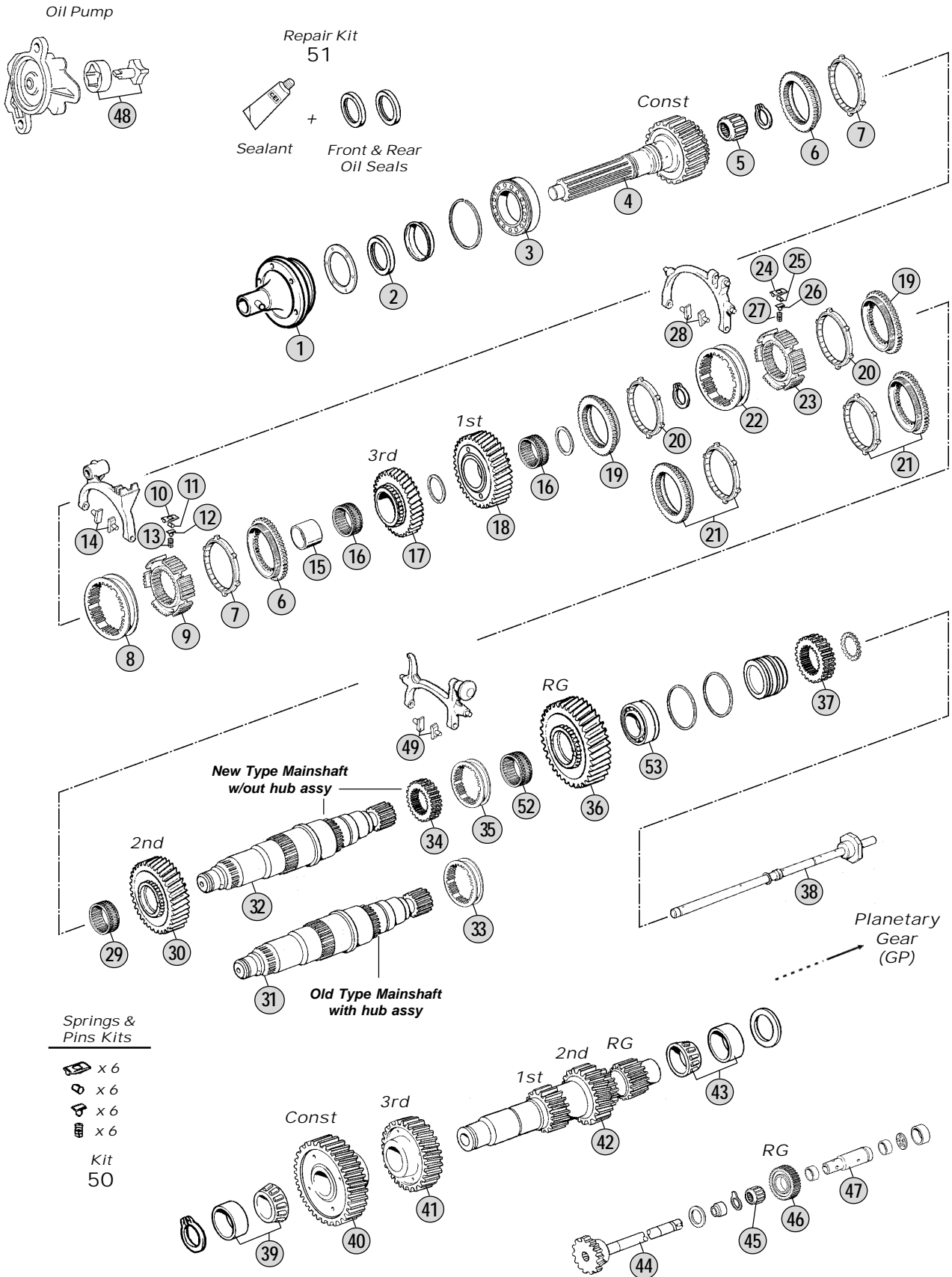
Date

04 / 2012

Table

070/A

Adattabile a : **VOLVO**
Suitable To :



All original equipment manufacturers' numbers, symbols and description used in this catalogue are for reference only, and it is not implied that any part listed is the product of these manufacturers. Tutti i nostri particolari non sono originali ma con essi intercambiabili. I riferimenti originali, le figure, i modelli sono esposti a semplice titolo indicativo. La nostra produzione riporta il nostro marchio.

Models

- G7 Buses B10B - B10BLE - B10M - B12(BR)
- G8 Buses B7F - B7R - B10R(BR) - B10BLE - B10M B12



Fig.	CEI no.	Rif. VOLVO	Description	Q.ty	Note	G7	G8		
41	146.507	1672239	Gear 3rd Speed 37 T	1		●	●		
42	105.134	1669415	Countershaft 29/23/15 T	1	(C) Old Type	●	●		
42	105.150	20366930	Countershaft 23/29/12 T	1	(D) New Type	●	●		
43	130.567	1652099	Bearing Cone	1		●	●		
44	107.176	1667078	Reverse Shaft	1		●	●		
45	137.194	1652147	Needle Cage	1		●	●		
46	147.167	1672244	Reverse Gear 20 T	1		●	●		
46	147.298	1655559	Reverse Gear 20 T	1	(C) Old Type	●	●		
46	147.167	1672244	Reverse Gear 20 T	1	(D) New Type	●	●		
47	107.175	1655527	Reverse Shaft	1		●	●		
48	198.821	1652671	Oil Pump Gear Kit	1		●	●		
49	141.045	382565	Sliding Block	2		●	●		
50	198.893	CEI 198893	Springs/Slides Kit	1		●	●		
51	198.894	CEI 198894	Sealant and Oil Seals Kit	1	(Models w/out retarder)	●	●		
52	137.195	1652261	Needle Cage 90x98x40	1		●	●		
53	130.569	1652123	Bearing 70x150x30,5	1		●	●		

All original equipment manufacturers' numbers, symbols, pictures, models and description used in this catalogue are for reference only, and it is not implied that any part listed is the product of these manufactures. Tutti i nostri particolari non sono originali ma con essi intercambiabili. I riferimenti originali, le figure, i modelli sono esposti a semplice titolo indicativo. La nostra produzione riporta il nostro marchio.

Notes

- (A) Use items marked (A) together
- (B) Use items marked (B) together
- (C) Old Type (D) New Type with helical RG
- (1) Old type having Mainshaft with hub Assy

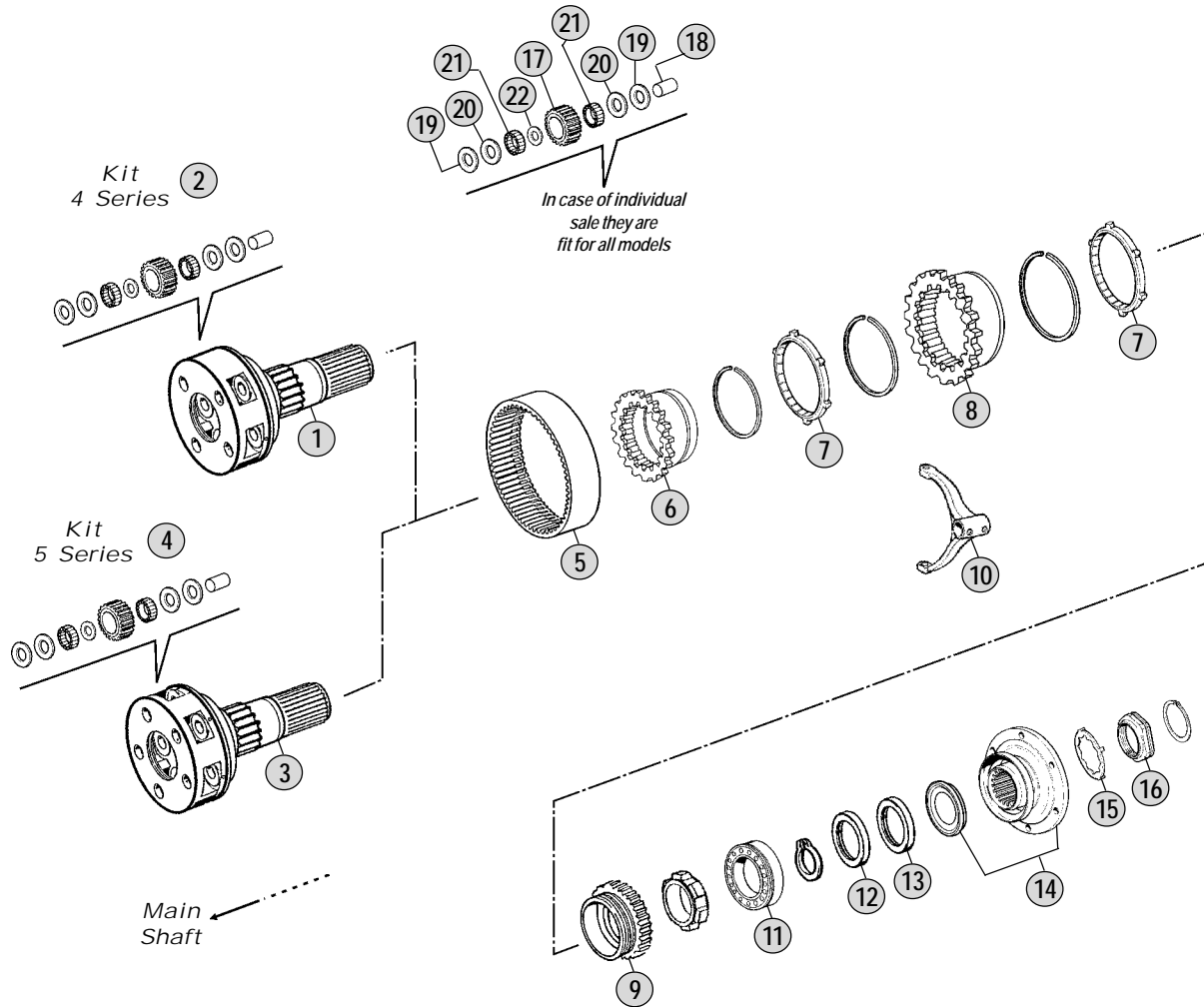
Date

04 / 2012

Table

070/A





All original equipment manufacturers' numbers, symbols, pictures, models and description used in this catalogue are for reference only, and it is not implied that any part listed is the product of these manufactures. Tutti i nostri particolari non sono originali ma con essi intercambiabili. I riferimenti originali, le figure, i modelli sono esposti a semplice titolo indicativo. La nostra produzione riporta il nostro marchio.

Models

G7	Buses B10B - B10BLE - B10M - B12(BR)
R62	Buses B7F - B7R - B10R(BR) - B10BLE - B10M - B12

Fig.	CEI no.	Rif. VOLVO	Description	Q.ty	Note	G7	G8			
1	190.340	1656299	Planetary Carrier	1	Complete-Without retarder	●	●			
2	198.833	276114	Repair Kit	1	Without Retarder	●	●			
3	190.341	1667188	Planetary Carrier	1	Complete-With Hydr.Retarder	●	●			
3	190.342	1656298	Planetary Carrier	1	Complete-With Electro-Retarder	●	●			
4	198.834	276115	Pins/Sides Kit	1	With Retarder(Hydr.& Electro)	●	●			
5	123.233	1656209	Crown Gear 66 T	1		●	●			
6	157.609	1668452	Synchronizer Hub	1		●	●			
7	119.159	1668456	Synchronizer Ring	2		●	●			
8	150.146	1068946	Carrier Hub GP	1		●	●			
9	109.185	1668450	Synchronizer Cone	1		●	●			
10	141.167	1652919	Fork	1	Without Retarder	●	●			
10	141.166	1667193	Fork	1	With Retarder (Hydr.& Electro)	●	●			
11	130.566	1652604	Bearing 70x140x26	1	Without Retarder	●	●			
11	130.575	1669258	Bearing	1	With Electro-Retarder	●	●			
12	139.560	1652776	Oil Seal 90x145x10	1		●	●			
12	139.562	1667065	Oil Seal	1	With Hydraulic Retarder	●	●			
13	139.561	1652622	Oil Seal 90x111x6/8	1		●	●			
13	139.562	1667065	Oil Seal	1	With Hydraulic Retarder	●	●			
13	139.559	424763	Oil Seal	1	With Electro-Retarder	●	●			
14	197.086	3192075	Output Flange	1	Without Retarder	●	●			
14	197.086	3192075	Output Flange	1	With Hydraulic Retarder	●	●			
14	197.087	1669238	Output Flange	1	With Electro-Retarder	●	●			
15	169.804	1523318	Thrust Washer	1		●	●			
16	187.610	8171334	Grooved Nut	1		●	●			
17	157.975	CEI 157975	Planet Pinion 19 T	1	Use 4 or 5 pcs.	●	●			
18	107.250	CEI 107250	Planetary Pin	1	Use 4 or 5 pcs.	●	●			
19	169.780	8171167	Washer 33,5x61x1 (Bronze)	1	Use 8 or 10 pcs.	●	●			
20	169.779	8171165	Washer 33,5x61x1 (Steel)	1	Use 8 or 10 pcs.	●	●			
21	171.051	1656113	Needle 6x18,80	1	Use 160 or 200 pcs.	●	●			
22	169.781	267375	Spacer 36x44x2	1	Use 4 or 5 pcs.	●	●			

Notes

Date

04 / 2012

Table

070/B

All original equipment manufacturers' numbers, symbols, pictures, models and description used in this catalogue are for reference only, and it is not implied that any part listed is the product of these manufacturers.
Tutti i nostri particolari non sono originali ma con essi intercambiabili. I riferimenti originali, le figure, i modelli sono esposti a semplice titolo indicativo. La nostra produzione riporta il nostro marchio.