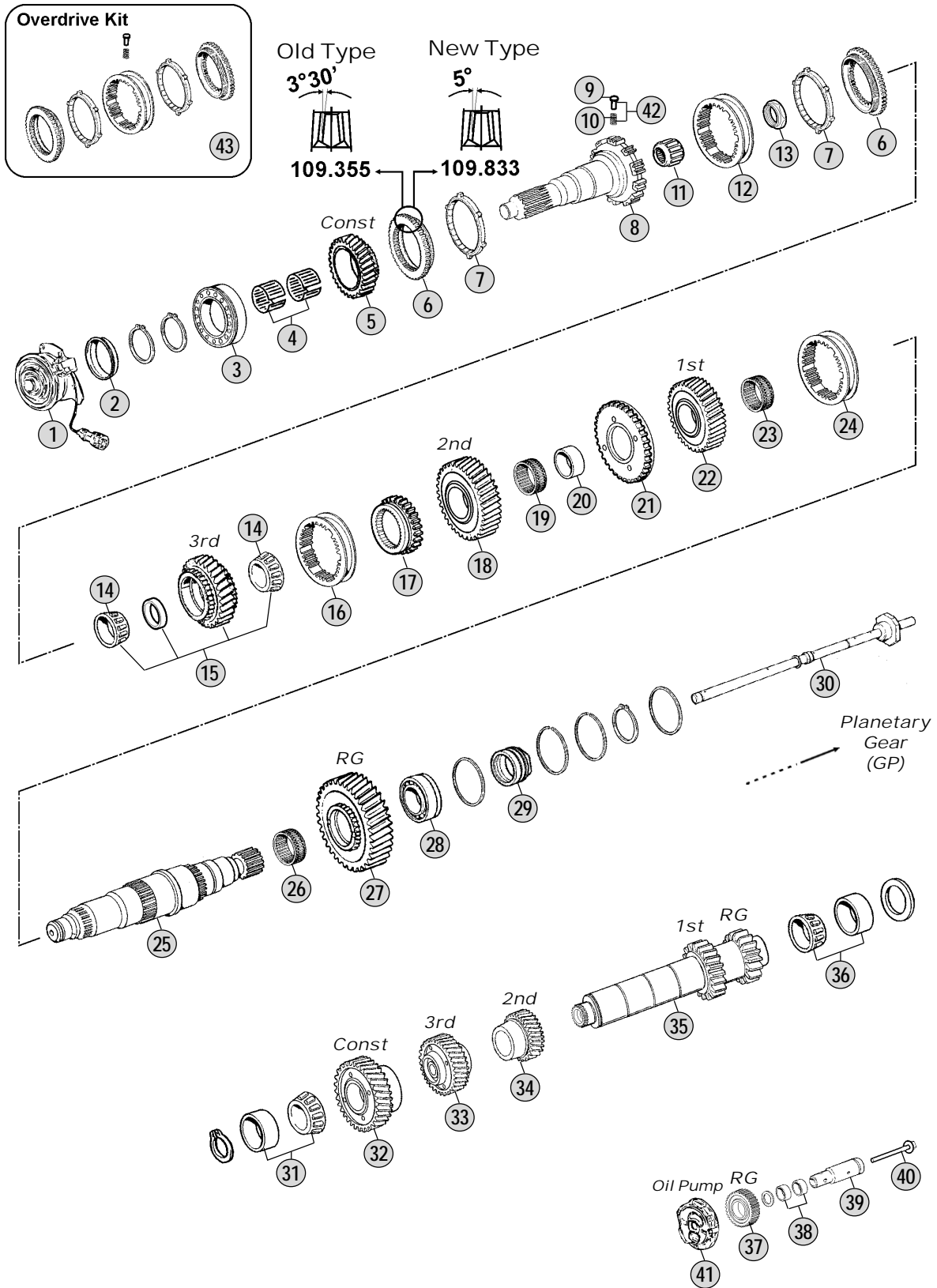


Adattabile a: **VOLVO** AT2412C/2812C - AT(O)2512C/3112C  
 Suitable To:



All original equipment manufacturers' numbers, symbols and description used in this catalogue are for reference only, and it is not implied that any part listed is the product of these manufactures. Tutti i nostri particolari non sono originali ma con essi intercambiabili. I riferimenti originali, le figure, i modelli sono esposti a semplice titolo indicativo. La nostra produzione riporta il nostro marchio.

Models

AT2412C - AT2512C - ATO2512C FH12 - FH13  
 AT2812C - ATO3112C FH16

Fig.	CEI no.	Rif. VOLVO	Description	Q.ty	Note	AT2412C	AT2512C	ATO2512C	AT2812C	ATO3112C
1	132.080	21465235	Cylinder	1		●	●	●		
1	132.081	21465237	Cylinder	1					●	●
2	139.914	20483426	Seal Ring	1		●	●	●	●	●
3	130.793	3192193	Bearing	1		●		●		
3	130.923	21626057	Bearing	1			●		●	●
4	137.230	1654088	Needle Bearing 92x100x26,6	1		●	●	●	●	●
5	145.780	20854441	Constant Gear 31 T	1		●				
5	145.782	20776783	Constant Gear 31 T	1			●		●	
5	146.724	20776790	Constant Gear I	1				●		●
6	109.355	1673541	Synchronizer Cone	2	(A)	●	●	●	●	●
6	109.833	20760515	Synchronizer Cone	2	(B)	●	●	●	●	●
7	119.186	1521438	Synchronizer Ring	2		●	●	●	●	●
8	102.448	20771702	Input Shaft 42 T	1		●		●		
8	102.447	20771700	Input Shaft	1			●			
8	102.536	20771698	Input Shaft	1					●	●
9	160.246	20766774	Pin	4		●	●	●	●	●
10	156.189	20845477	Spring	4		●	●	●	●	●
11	130.594	1656116	Roller Bearing 40x38	1		●	●	●	●	●
12	154.311	1673540	Sliding Sleeve	1	(A)	●	●	●	●	●
12	154.463	20760512	Sliding Sleeve	1	(B)	●	●	●	●	●
13	187.680	1521449	Nut	1		●	●	●	●	●
14	137.792	1521596	Bearing cone 65x36 mm	2	Oem	●	●	●	●	●
14	537.792	1521596	Bearing cone 65x36 mm	2	A.Market	●	●	●	●	●
15	244.009	20771311	Gear 3rd Speed 35 T	1		●	●	●	●	●
16	154.428	20532224	Sliding Sleeve	1		●	●	●	●	●
17	157.998	20532220	Synchronizer Hub	1		●	●	●	●	●
18	244.008	20540062	Gear 2nd Speed 41 T	1		●		●		
18	244.006	20532212	Gear 2nd Speed 41 T	1			●		●	●
19	137.196	1652575	Needle Cage 90x98x45,50	1		●	●	●	●	●
20	117.350	1652578	Bush	1		●	●	●	●	●
21	189.669	20542400	Sensor 12V	1	12V	●	●	●	●	●
21	189.706	21034006	Wheel Sensor 24V	1	24V	●	●	●	●	●
22	244.010	20906486	Gear 1st Speed 46 T	1		●	●	●	●	●
23	137.247	1521452	Needle Cage 95x103x59,5	1		●	●	●	●	●
24	154.428	20532224	Sliding Sleeve	1		●	●	●	●	●
25	103.228	20739229	Main shaft 23/23/28/37 T	1		●		●		
25	103.227	20532222	Main shaft 23/23/28/37 T	1			●		●	●
26	137.196	1652575	Needle Cage 90x98x45,50	1		●	●	●	●	●
27	147.254	20532217	Reverse Gear 34 T	1		●	●	●	●	●
28	130.923	21626057	Bearing	1		●	●	●	●	●
29	269.615	21339270	Spacer Ring	1		●	●	●	●	●
30	189.668	21016548	Oil Tube	1		●	●	●	●	●
31	130.567	1652099	Bearing Cone	1		●		●		
31	130.565	1652563	Bearing Cone 110x60x39,50	1			●		●	●
32	146.564	20854437	Constant Gear 44 T	1		●	●		●	

## Notes

- (A) To be coupled together  
(B) To be coupled together

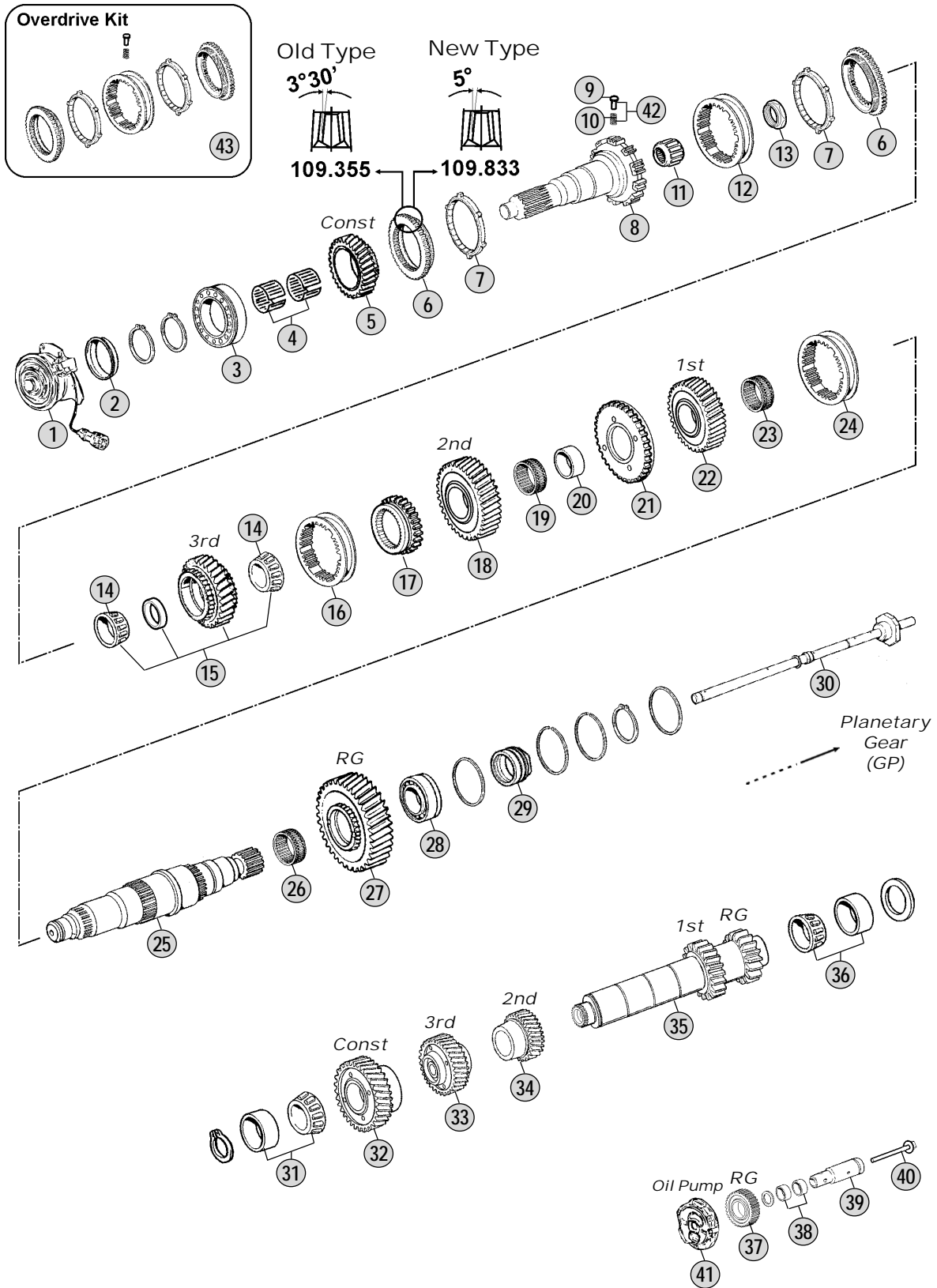
## Date

04 / 2012

## Table

110/A

Adattabile a: **VOLVO** AT2412C/2812C - AT(O)2512C/3112C  
Suitable To:



All original equipment manufacturers' numbers, symbols and description used in this catalogue are for reference only, and it is not implied that any part listed is the product of these manufactures. Tutti i nostri particolari non sono originali ma con essi intercambiabili. I riferimenti originali, le figure, i modelli sono esposti a semplice titolo indicativo. La nostra produzione riporta il nostro marchio.

Models

AT2412C - AT2512C - ATO2512C    FH12 - FH13  
AT2812C - ATO3112C                FH16



All original equipment manufacturers numbers, symbols, pictures, models and description used in this catalogue are for reference only, and it is not implied that any part listed is the product of these manufactures.  
Tutti i nostri particolari non sono originali ma con essi intercambiabili. I riferimenti originali, le figure, i modelli sono esposti a semplice titolo indicativo. La nostra produzione riporta il nostro marchio.

Fig.	CEI no.	Rif. VOLVO	Description	Q.ty	Note	AT2412C	AT2512C	ATO2512C	AT2812C	ATO3112C
32	146.725	20483432	Constant Gear II	1				●		●
33	146.676	20366990	Gear 3rd Speed 39 T	1		●		●		●
33	146.679	20483434	Gear 3rd Speed 39 T	1			●		●	●
34	146.681	20544783	Gear 2nd Speed 28 T	1		●			●	●
34	146.680	20544781	Gear 2nd Speed 28 T	1			●	●	●	●
35	105.232	20544787	Countershaft 12/19/24 T	1		●		●		●
35	105.231	20544785	Countershaft 12/19/32 T	1			●		●	●
36	130.677	20901349	Bearing Cone	1		●	●	●	●	●
37	147.291	20483570	Reverse Gear	1		●	●	●	●	●
38	117.469	20483574	Bush	2		●	●	●	●	●
39	107.252	20785053	Reverse Pin	1		●	●	●	●	●
40	287.093	973097	Screw	1		●	●	●	●	●
41	280.798	20567034	Oil Pump	1		●	●	●	●	●
42	298.048	20845497	Pins/Springs kit	1		●	●	●	●	●
43	298.844	CEI 298844	Synchro Kit	1	(B) New Type	●	●	●	●	●

## Notes

- (A) To be coupled together  
(B) To be coupled together

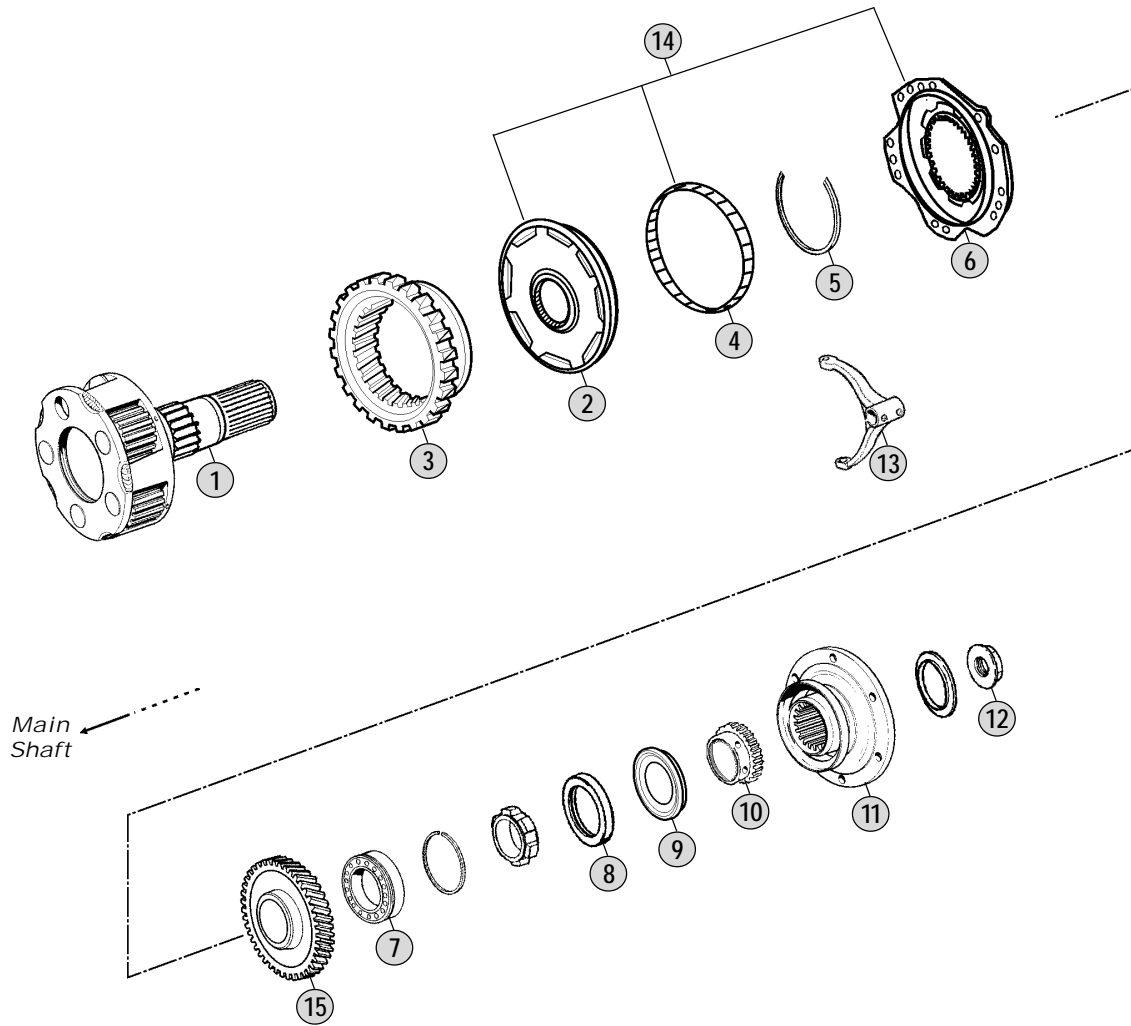
Date

04 / 2012

Table

110/A

Adattabile a : **VOLVO** AT2412C/2812C - AT(O)2512C/3112C  
Suitable To :



All original equipment manufacturers' numbers, symbols, pictures, models and description used in this catalogue are for reference only, and it is not implied that any part listed is the product of these manufactures. Tutti i nostri particolari non sono originali ma con essi intercambiabili. I riferimenti originali, le figure, i modelli sono esposti a semplice titolo indicativo. La nostra produzione riporta il nostro marchio.

Models

AT2412C - AT2512C - ATO2512C	FH12 - FH13
AT2812C - ATO3112C	FH16



Fig.	CEI no.	Rif. VOLVO	Description	Q.ty	Note	AT2412C	AT2512C	ATO2512C	AT2812C	ATO3112C
1	190.485	20590147	Planetary Carrier	1	(1) Old Type w/out Retarder	●		●		
1	190.486	20590148	Planetary Carrier	1	(1) Old Type w/out Retarder		●		●	●
1	190.478	21021416	Planetary Carrier	1	New Type w/out Retarder	●	●	●	●	●
1	190.488	20733118	Planetary Carrier	1	(1) Old Type with Retarder	●		●		
1	190.487	20733119	Planetary Carrier	1	(1) Old Type with Retarder		●		●	●
1	190.478	21021416	Planetary Carrier	1	New type with Retarder	●	●	●	●	●
2	109.764	21480996	Synchronizer Cone	1	w/out Retarder	●	●	●	●	●
2	109.840	21480998	Synchronizer Cone	1	with Retarder	●	●	●	●	●
3	123.293	21110728	Crown Gear 77/72 T	1	w/out Retarder	●	●	●	●	●
3	123.323	21110726	Crown Gear 77/72 T	1	with Retarder	●	●	●	●	●
4	119.307	21430239	Synchronizer Ring	1		●	●	●	●	●
5	269.611	20737310	Ring	1		●	●	●	●	●
6	109.835	21108695	Synchronizer Cone	1		●	●	●	●	●
7	130.566	1652604	Bearing 70x140x26	1	Old Type w/out Retarder	●	●	●	●	●
7	130.931	21001091	Bearing 70x140x26	1	Old Type with Retarder	●	●	●	●	●
7	130.932	20785448	Bearing	1	New Type w/out Retarder	●	●	●	●	●
7	130.933	21005761	Bearing	1	New Type with Retarder	●	●	●	●	●
8	139.560	1652776	Oil Seal 90x145x10	1	Old Type	●	●	●	●	●
8	139.915	20791305	Oil Seal	1	New Type	●	●	●	●	●
9	139.561	1652622	Oil Seal 90x111x6/8	1	Old Type	●	●	●	●	●
9	139.916	20791222	Oil Seal	1	New Type	●	●	●	●	●
10	189.707	1521751	Wheel Sensor 24V	1	Old Type w/out Retarder	●	●	●	●	●
10	189.713	3191944	Wheel Sensor	1	Old Type with Retarder	●	●	●	●	●
10	189.708	20784855	Wheel Sensor	1	New Type w/out Retarder	●	●	●	●	●
10	189.709	20774242	Wheel Sensor	1	New type with Retarder	●	●	●	●	●
11	197.229	8172620	Output Flange	1	Old Type	●	●	●	●	●
11	197.230	20773853	Output Flange	1	New Type	●	●	●	●	●
12	187.613	8171338	Grooved Nut	1		●	●	●	●	●
13	141.234	20579443	Fork	1		●	●	●	●	●
14	298.245	21571607	Synchro Kit	1	w/out Retarder	●	●	●	●	●
14	298.292	21571608	Synchro Kit	1	with Retarder	●	●	●	●	●
15	244.166	20585994	Gear Retarder	1	Old Type with Retarder	●	●	●	●	●
15	244.167	21010667	Gear Retarder	1	New Type with Retarder	●	●	●	●	●

All original equipment manufacturers' numbers, symbols, pictures, models and description used in this catalogue are for reference only, and it is not implied that any part listed is the product of these manufacturers. Tutti i nostri particolari non sono originali ma con essi intercambiabili. I riferimenti originali, le figure, i modelli sono esposti a semplice titolo indicativo. La nostra produzione riporta il nostro marchio.

#### Notes

(1) Old Planetary Carrier is replaced by:  
1 pc. 21021416 (Fig.1) + 1 pc. 20785448 (Fig.7) + 1 pc. 20791305 (Fig.8) + 1 pc. 20791222 (Fig.9) + 1 pc. 20784855 or 20774242 (Fig.10) + 1 pc. 20773853 (Fig.11)

#### Date

04 / 2012

#### Table

110<sub>B</sub>