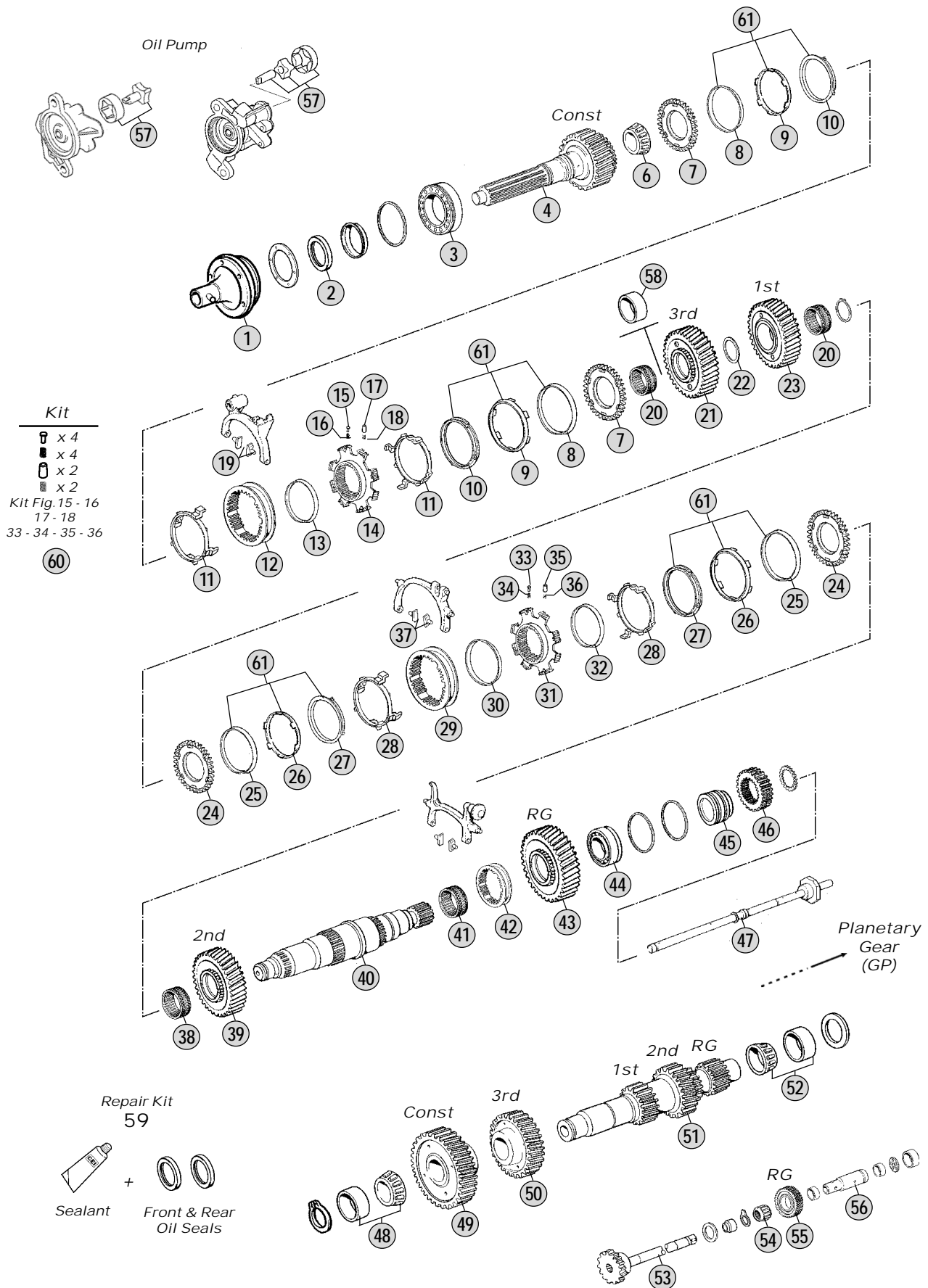


Adattabile a: **VOLVO**
 Suitable To: **VOLVO**

Modelli Cambio/ Gearbox Models
VT1708B



All original equipment manufacturers' numbers, symbols, pictures, models and description used in this catalogue are for reference only, and it is not implied that any part listed is the product of these manufactures. Tutti i nostri particolari non sono originali ma con essi intercambiabili. I riferimenti originali, le figure, i modelli sono esposti a semplice titolo indicativo. La nostra produzione riporta il nostro marchio.

Models

VT 1708B FM9 - FH12 - FM12

Fig.	CEI no.	Rif. VOLVO	Description	Q.ty	Note				
1	135.136	1656121	Front Cover	1		●			
2	139.391	267268	Oil Seal 65x90x10 B1SL	1		●			
3	130.570	18459	Bearing 85x150x30,5	1		●			
4	102.435	20366313	Input Shaft	1		●			
6	130.568	1656104	Bearing 45x35	1		●			
7	109.356	1521878	Synchronizer Cone	2		●			
8	119.187	3192951	Synchronizer Ring Inner	2		●			
9	119.189	1069254	Synchronizer Ring Intermediate	2		●			
10	119.188	1069255	Synchronizer Ring Outer	2		●			
11	169.811	1521890	Plate Pusher	2		●			
12	154.309	20588775	Sliding Sleeve	1		●			
13	169.814	1521886	Ring	1		●			
14	155.248	20366314	Synchronizer Hub	1		●			
15	160.207	8171413	Slide	4		●			
16	156.183	1069474	Spring	4		●			
17	160.206	1521870	Pin	2		●			
18	156.181	8172433	Spring	2		●			
19	141.045	382565	Sliding Block	2		●			
20	137.197	1655563	Needle Cage	2		●			
21	145.976	8171942	Gear 3rd Speed 36 T	1		●			
22	167.114	1652844	Washer	1		●			
23	145.701	1069316	Gear 1st Speed 44 T	1		●			
24	109.380	1521879	Synchronizer Cone	2		●			
25	119.187	3192951	Synchronizer Ring Inner	2		●			
26	119.189	1069254	Synchronizer Ring Intermediate	2		●			
27	119.188	1069255	Synchronizer Ring Outer	2		●			
28	169.811	1521890	Plate Pusher	2		●			
29	154.309	20588775	Sliding Sleeve	1		●			
30	169.813	8171735	Ring	1	(A)	●			
30	169.817	20588777	Ring	1	(B)	●			
31	155.250	20366328	Synchronizer Hub	1	(A)	●			
31	155.249	20589917	Synchronizer Hub	1	(B)	●			
32	169.812	1069888	Ring	1		●			
33	160.207	8171413	Slide	4		●			
34	156.183	1069474	Spring	4		●			
35	160.206	1521870	Pin	2		●			
36	156.181	8172433	Spring	2		●			
37	141.045	382565	Sliding Block	2		●			
38	137.196	1652575	Needle Cage 90x98x45,50	1		●			
39	145.977	20366323	Gear 2nd Speed 39 T	1		●			
40	103.152	20366733	Main Shaft 34/42/28/28 T	1		●			
41	137.195	1652261	Needle Cage 90x98x40	1		●			
42	154.198	20366826	Sliding Sleeve	1		●			
43	147.191	1672243	Reverse Gear 34 T	1		●			
44	130.569	1652123	Bearing 70x150x30,5	1		●			

Notes

(A) Use items marked (A) together
 (B) Use items marked (B) together

Date

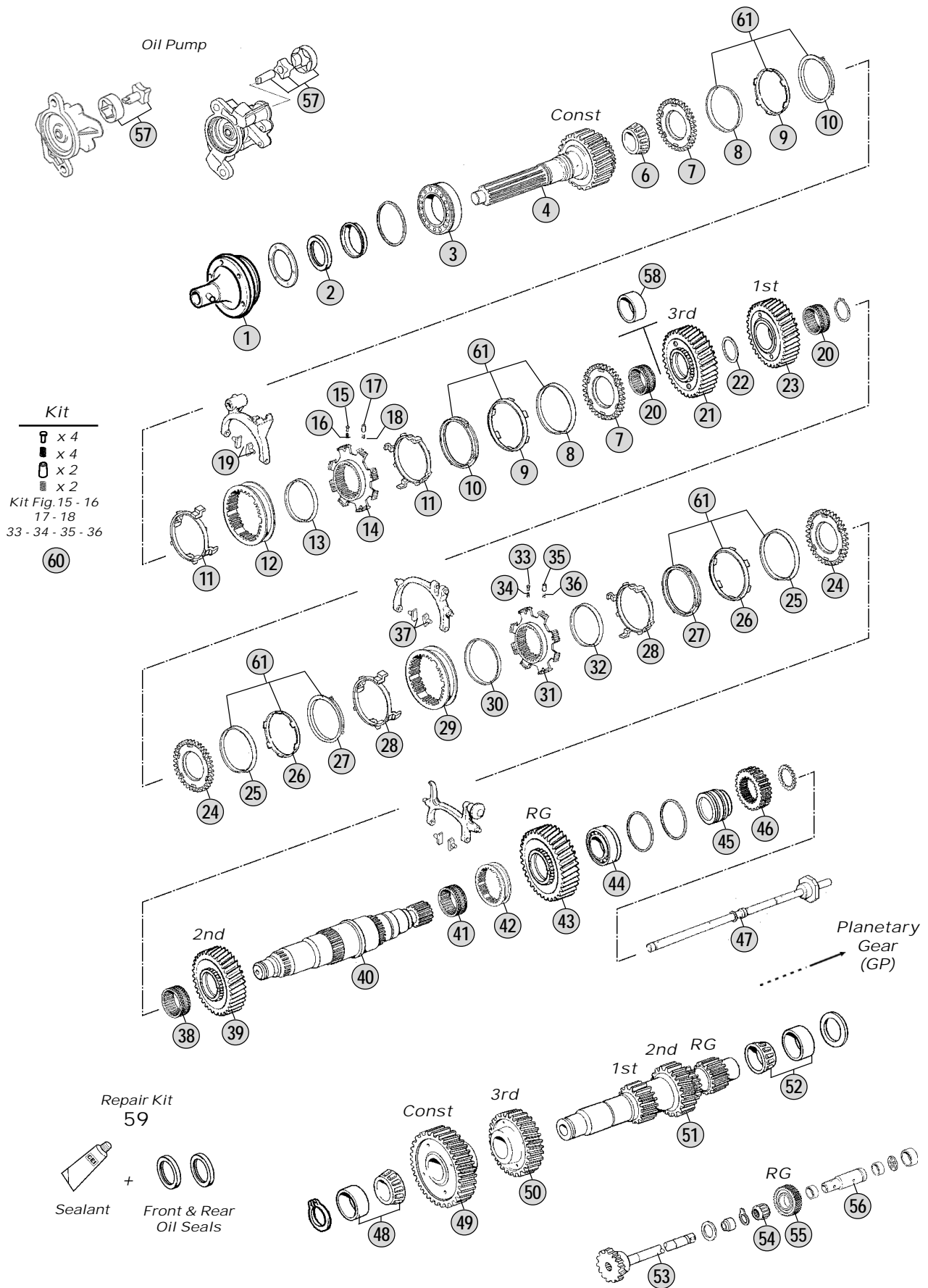
04 / 2012

Table

130A

Adattabile a: **VOLVO**
 Suitable To: **VOLVO**

Modelli Cambio/ Gearbox Models
VT1708B



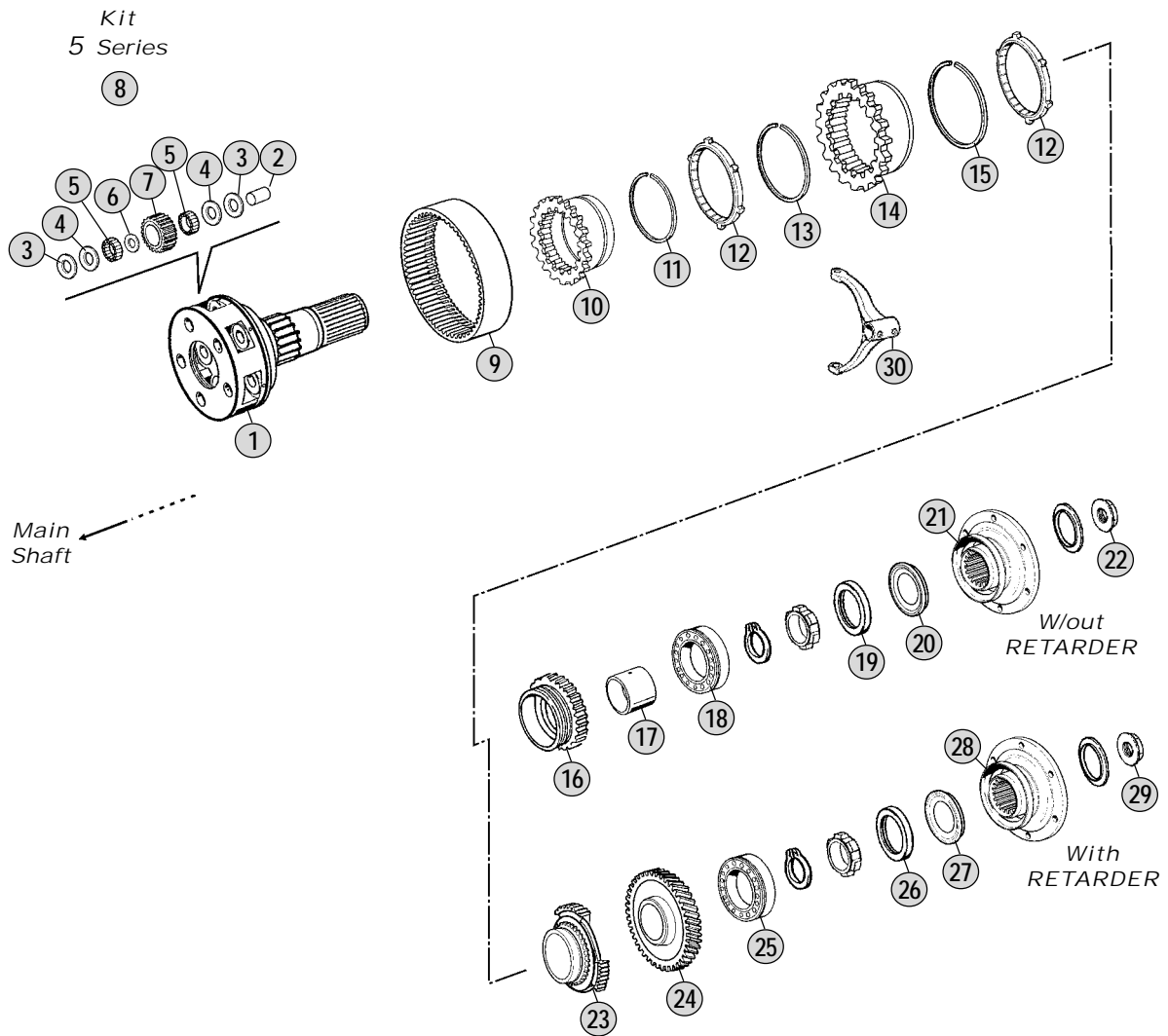
All original equipment manufacturers' numbers, symbols, models and description used in this catalogue are for reference only, and it is not implied that any part listed is the product of these manufactures.
 Tutti i nostri particolari non sono originali ma con essi intercambiabili. I riferimenti originali, le figure, i modelli sono esposti a semplice titolo indicativo. La nostra produzione riporta il nostro marchio.

Models

VT 1708B FM9 - FH12 - FM12



Adattabile a : **VOLVO**
Suitable To :



All original equipment manufacturers' numbers, symbols, pictures, models and description used in this catalogue are for reference only, and it is not implied that any part listed is the product of these manufactures. Tutti i nostri particolari non sono originali ma con essi intercambiabili. I riferimenti originali, le figure, i modelli sono esposti a semplice titolo indicativo. La nostra produzione riporta il nostro marchio.

Models

VT 1708B FM9 - FH12 - FM12

VT 1708B

Fig.	CEI no.	Rif. VOLVO	Description	Q.ty	Note				
1	190.344	1673844	Planetary Carrier	1	Complete-W/out Retarder	●			
1	190.363	1673842	Planetary Carrier	1	Complete-With Retarder	●			
2	107.169	1654054	Planetary Pin	5		●			
3	169.780	8171167	Washer 33,5x61x1 (Bronze)	10		●			
4	169.779	8171165	Washer 33,5x61x1 (Steel)	10		●			
5	171.051	1656113	Needle 6x18,80	200		●			
6	169.781	267375	Spacer 36x44x2	5		●			
7	157.216	1656208	Planet Pinion 19 T	5		●			
8	198.834	276115	Pins/Sides Kit	1		●			
9	123.233	1656209	Crown Gear 66 T	1		●			
10	157.609	1668452	Hub	1		●			
11	111.213	943760	Lock Ring	1		●			
12	119.159	1668456	Synchronizer Ring	2		●			
13	111.211	1668459	Lock Ring	1		●			
14	150.146	1068946	Carrier Hub GP	1		●			
15	111.212	8171420	Lock Ring	1		●			
16	109.185	1668450	Synchronizer Cone	1	W/out Retarder	●			
17	117.376	1669997	Bush	1	W/out Retarder	●			
18	130.566	1652604	Bearing 70x140x26	1	W/out Retarder	●			
19	139.560	1652776	Oil Seal 90x145x10	1	W/out Retarder	●			
20	139.561	1652622	Oil Seal 90x111x6/8	1	W/out Retarder	●			
21	197.126	8172618	Output Flange	1	W/out Retarder	●			
22	187.613	8171338	Grooved Nut	1	W/out Retarder	●			
23	109.381	1672262	Synchronizer Cone	1	With Retarder	●			
24	145.789	1521257	Retarder Gear 63 T	1	With Retarder	●			
25	130.566	1652604	Bearing 70x140x26	1	With Retarder	●			
26	139.560	1652776	Oil Seal 90x145x10	1	With Retarder	●			
27	139.561	1652622	Oil Seal 90x111x6/8	1	With Retarder	●			
28	197.127	8172622	Output Flange	1	With Retarder	●			
29	187.613	8171338	Grooved Nut	1	With Retarder	●			
30	141.167	1652919	Fork	1		●			

Notes

Date

04 / 2012

Table

130_B