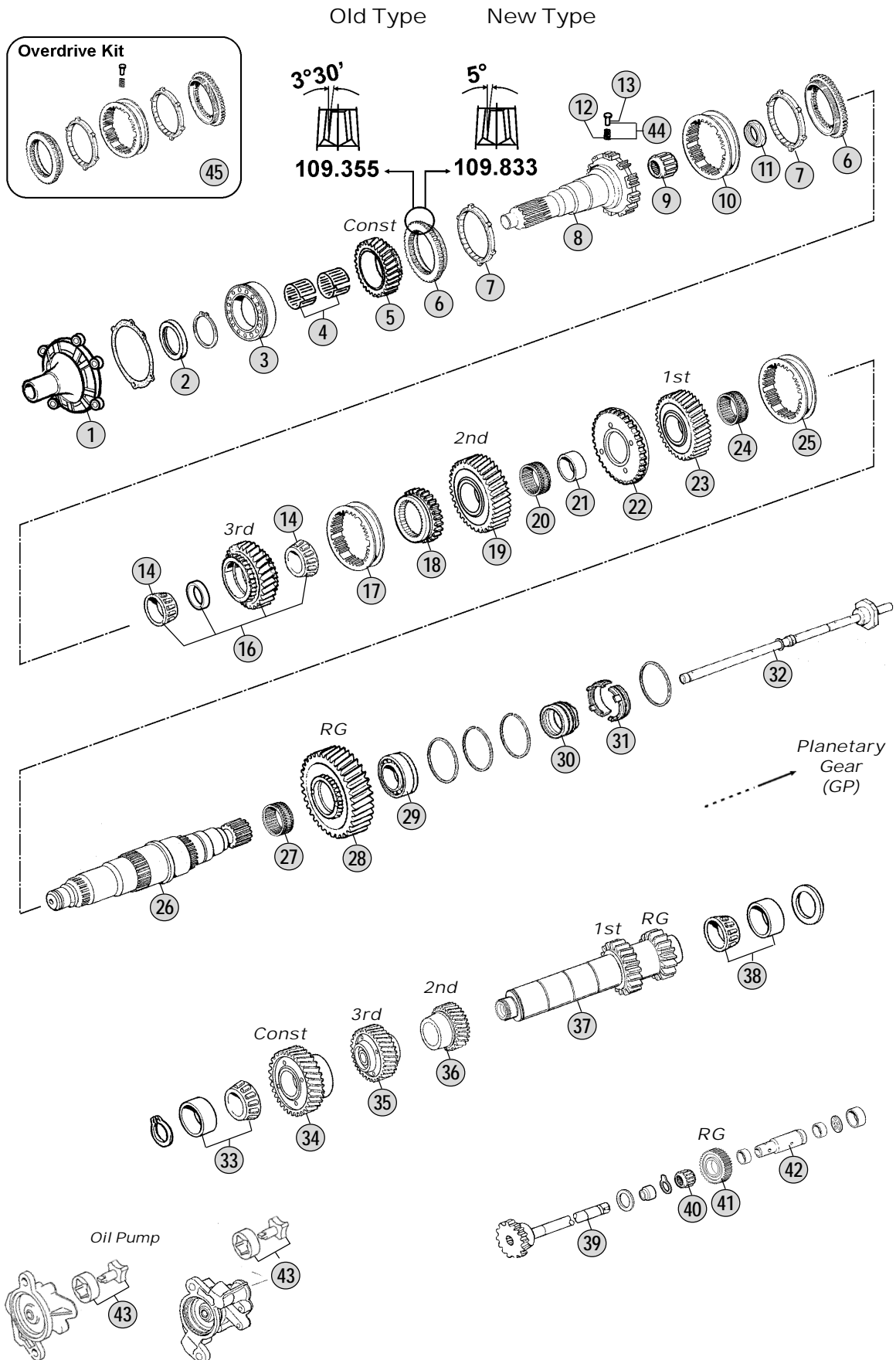


Adattabile a: **VOLVO**
Suitable To:

Modelli Cambio/ Gearbox Models
VT 2412B



All original equipment manufacturers' numbers, symbols, models and description used in this catalogue are for reference only, and it is not implied that any part listed is the product of these manufactures. Tutti i nostri particolari non sono originali ma con essi intercambiabili. I riferimenti originali, le figure, i modelli sono esposti a semplice titolo indicativo. La nostra produzione riporta il nostro marchio.

Models

VT 2412B FM9 - FH12 - FM12

VT 2412B

Fig.	CEI no.	Rif. VOLVO	Description	Q.ty	Note				
1	135.178	20366711	Front Cover	1		●			
2	139.750	20476025	Oil Seal 64,9x90x10	1		●			
3	130.793	3192193	Bearing	1		●			
4	137.230	1654088	Needle Bearing 92x100x26,6	1		●			
5	145.782	20776783	Constant Gear 31 T	1		●			
6	109.355	1673541	Synchronizer Cone	2	(A)	●			
6	109.833	20760515	Synchronizer Cone	2	(B)	●			
7	119.186	1521438	Synchronizer Ring	2		●			
8	102.439	20366123	Input Shaft	1		●			
9	130.594	1656116	Roller Bearing 40x38	1		●			
10	154.311	1673540	Sliding Sleeve	1	(A)	●			
10	154.463	20760512	Sliding Sleeve	1	(B)	●			
11	187.680	1521449	Nut	1		●			
12	156.189	20845477	Spring	4		●			
13	160.246	20766774	Pin	4		●			
14	137.792	1521596	Bearing cone 65x36 mm	2	Oem	●			
14	537.792	1521596	Bearing cone 65x36 mm	2	A.Market	●			
16	145.980	8172752	Gear 3rd Speed 35 T	1		●			
17	154.420	3152798	Sliding Sleeve	1		●			
18	155.251	20483351	Hub	1		●			
19	145.981	20499806	Gear 2nd Speed 41 T	1		●			
20	137.196	1652575	Needle Cage 90x98x45,50	1		●			
21	117.350	1652578	Bush	1		●			
22	189.669	20542400	Sensor 12V	1		●			
23	145.982	20483445	Gear 1st Speed 46 T	1		●			
24	137.247	1521452	Needle Cage 95x103x59,5	1		●			
25	154.420	3152798	Sliding Sleeve	1		●			
26	103.192	20537204	Main Shaft 23 T	1		●			
27	137.196	1652575	Needle Cage 90x98x45,50	1		●			
28	147.216	3152722	Reverse Gear 34 T	1		●			
29	130.793	3192193	Bearing	1		●			
30	269.181	20366608	Spacer	1		●			
31	139.917	85105925	Dust Cover	1		●			
31	139.918	20508962	Oil Distributor	1	(1)	●			
31	139.919	20508964	Oil Distributor	1	(2)	●			
32	189.667	20366610	Oil Tube	1		●			
33	130.567	1652099	Bearing Cone	1		●			
34	146.564	20854437	Constant Gear 44 T	1		●			
35	146.676	20366990	Gear 3rd Speed 39 T	1		●			
36	145.983	1069839	Gear 2nd Speed 28 T	1		●			
37	105.226	20366588	Countershaft Z 12/19/24	1		●			
38	130.565	1652563	Bearing Cone 110x60x39,50	1		●			
39	107.223	20366611	Reverse Shaft 15 T	1		●			
40	137.229	1652581	Needle Cage 42x50x60	1		●			
41	147.195	1521423	Reverse Gear 20 T	1		●			

Notes

- (1) For Australian version (Left hand)
 (2) For Australian version (Right hand)
 (A) To be coupled together
 (B) To be coupled together

Date

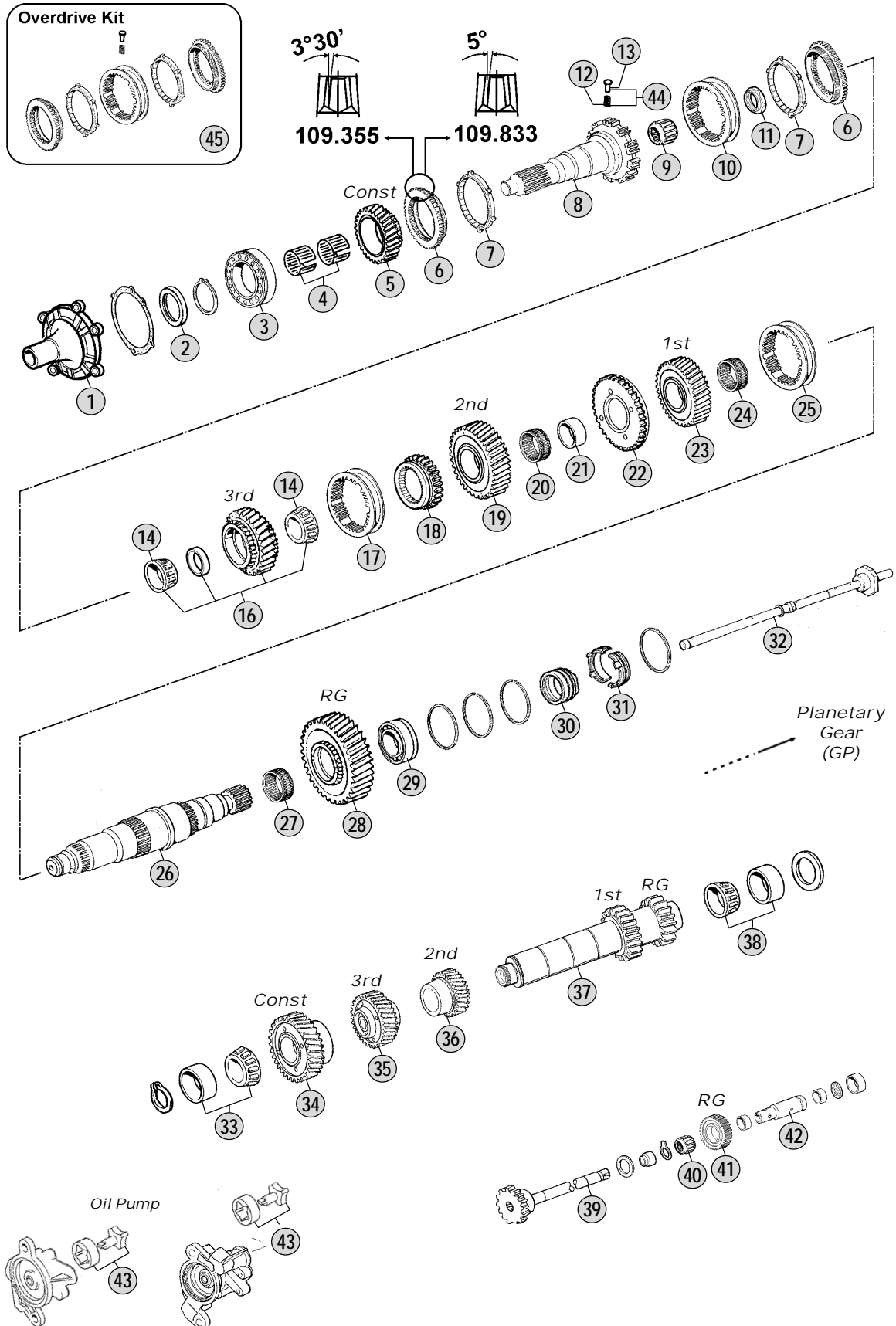
04 / 2012

Table

150A

Adattabile a: **VOLVO**
Suitable To:

Modelli Cambio/ Gearbox Models
VT 2412B



All original equipment manufacturers' numbers, symbols, models and description used in this catalogue are for reference only, and it is not implied that any part listed is the product of these manufactures. Tutti i nostri particolari non sono originali ma con essi intercambiabili. I riferimenti originali, le figure, i modelli sono esposti a semplice titolo indicativo. La nostra produzione riporta il nostro marchio.

Models

VT 2412B FM9 - FH12 - FM12

VT 2412B

All original equipment manufacturers numbers, symbols, pictures, models and description used in this catalogue are for reference only, and it is not implied that any part listed is the product of these manufacturers. Tutti i nostri particolari non sono originali ma con essi intercambiabili. I riferimenti originali, le figure, i modelli sono esposti a semplice titolo indicativo. La nostra produzione riporta il nostro marchio.

Fig.	CEI no.	Rif. VOLVO	Description	Q.ty	Note					
42	107.182	20366756	Reverse Pin	1		●				
43	198.888	1521787	Oil Pump Gear Kit	1		●				
44	298.048	20845497	Pins/Springs kit	1		●				
45	298.844	CEI 298844	Synchro Kit	1	(B) New Type	●				



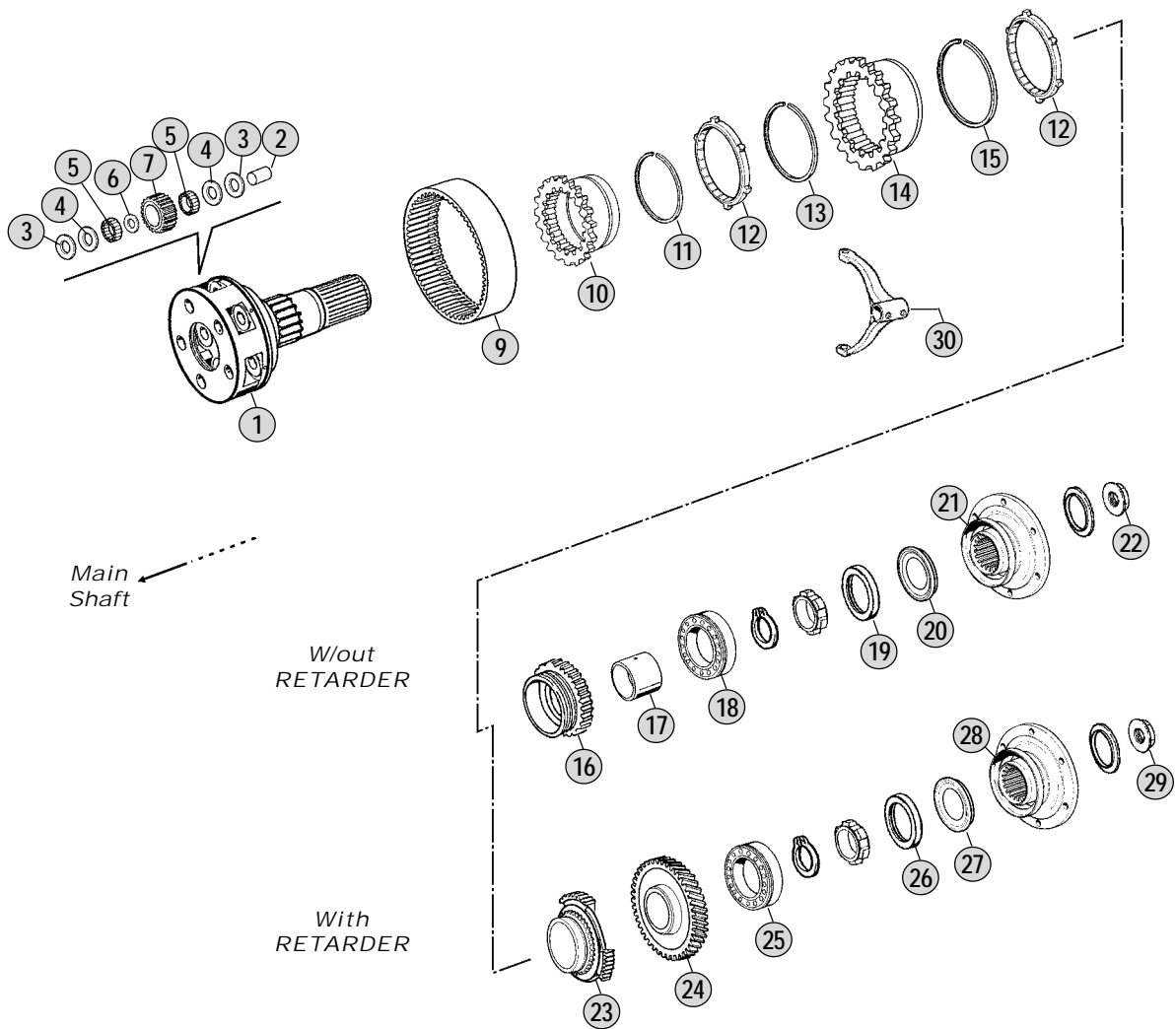
Notes
 (1) For Australian version (Left hand)
 (2) For Australian version (Right hand)
 (A) To be coupled together
 (B) To be coupled together

Date
 04 / 2012

Table
 150A

Adattabile a : **VOLVO**
Suitable To :

Modelli Cambio/ Gearbox Models
VT 2412B



All original equipment manufacturers' numbers, symbols, pictures, models and description used in this catalogue are for reference only, and it is not implied that any part listed is the product of these manufactures. Tutti i nostri particolari non sono originali ma con essi intercambiabili. I riferimenti originali, le figure, i modelli sono esposti a semplice titolo indicativo. La nostra produzione riporta il nostro marchio.

Models

VT 2412B FM9 - FH12 - FM12



VT 2412B

Fig.	CEI no.	Rif. VOLVO	Description	Q.ty	Note				
1	190.419	8172214	Planetary Carrier	1	Complete-W/out Retarder	●			
1	190.420	8172216	Planetary Carrier	1	Complete-With Retarder	●			
2	107.169	1654054	Planetary Pin	5		●			
3	169.780	8171167	Washer 33,5x61x1 (Bronze)	10		●			
4	169.779	8171165	Washer 33,5x61x1 (Steel)	10		●			
5	171.051	1656113	Needle 6x18,80	200		●			
6	169.781	267375	Spacer 36x44x2	5		●			
7	157.992	20366960	Planet Pinion	5		●			
9	123.280	1069957	Crown Gear	1		●			
10	157.609	1668452	Hub	1		●			
11	111.213	943760	Lock Ring	1		●			
12	119.159	1668456	Synchronizer Ring	2		●			
13	111.211	1668459	Lock Ring	1		●			
14	150.191	3192541	Carrier Hub	1		●			
15	111.212	8171420	Lock Ring	1		●			
16	109.185	1668450	Synchronizer Cone	1	W/out Retarder	●			
17	117.376	1669997	Bush	1	W/out Retarder	●			
18	130.566	1652604	Bearing 70x140x26	1	W/out Retarder	●			
19	139.560	1652776	Oil Seal 90x145x10	1	W/out Retarder	●			
20	139.561	1652622	Oil Seal 90x111x6/8	1	W/out Retarder	●			
21	197.126	8172618	Output Flange	1	W/out Retarder	●			
22	187.613	8171338	Grooved Nut	1	W/out Retarder	●			
23	109.381	1672262	Synchronizer Cone	1	With Retarder	●			
24	145.789	1521257	Retarder Gear 63 T	1	With Retarder	●			
25	130.566	1652604	Bearing 70x140x26	1	With Retarder	●			
26	139.560	1652776	Oil Seal 90x145x10	1	With Retarder	●			
27	139.561	1652622	Oil Seal 90x111x6/8	1	With Retarder	●			
28	197.127	8172622	Output Flange	1	With Retarder	●			
29	187.613	8171338	Grooved Nut	1	With Retarder	●			
30	141.167	1652919	Fork	1		●			

Notes

Date

04 / 2012

Table

150_B

All original equipment manufacturers' numbers, symbols, pictures, models and description used in this catalogue are for reference only, and it is not implied that any part listed is the product of these manufacturers.
 Tutti i nostri particolari non sono originali ma con essi intercambiabili. I riferimenti originali, le figure, i modelli sono esposti a semplice titolo indicativo. La nostra produzione riporta il nostro marchio.