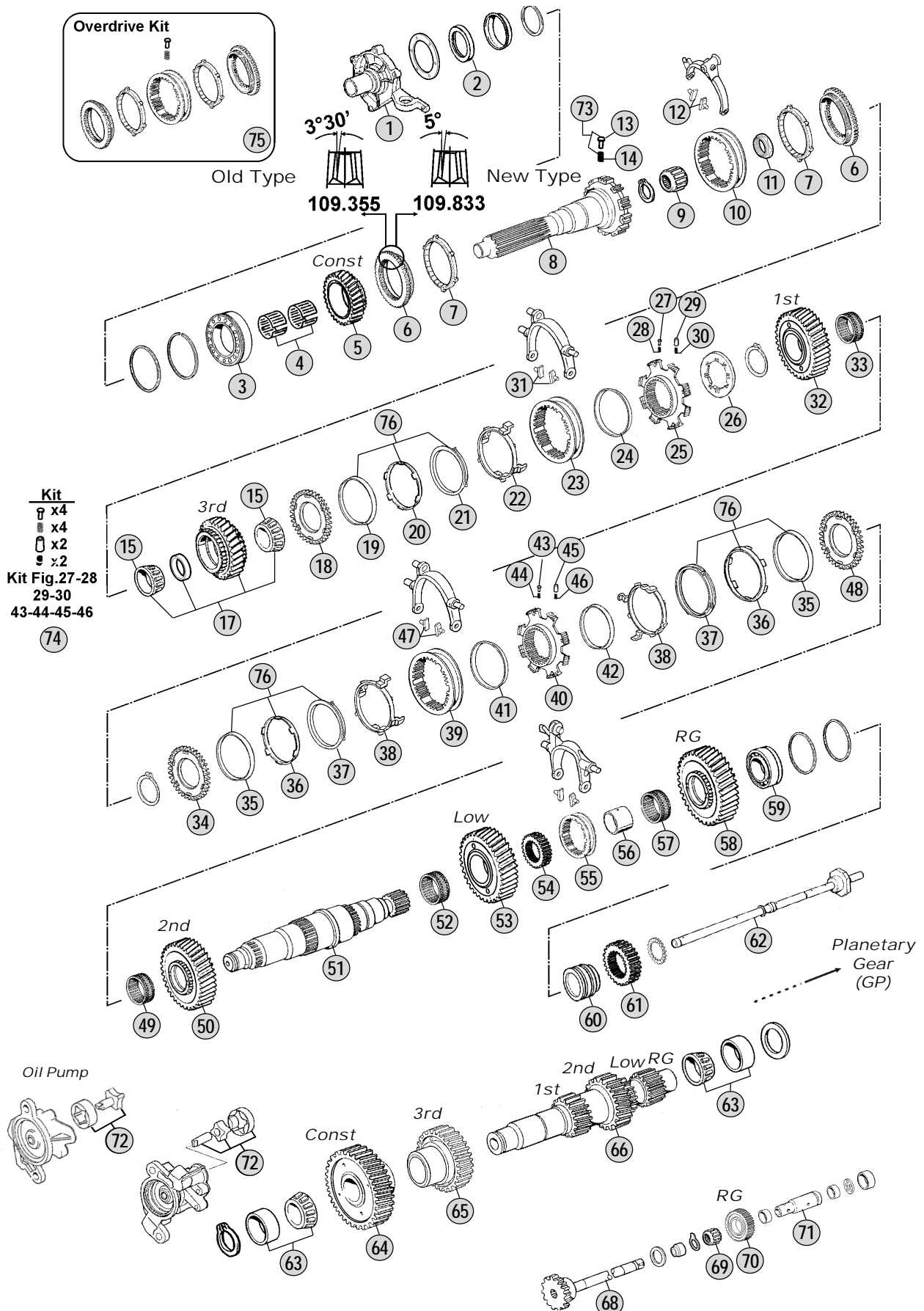


Adattabile a: **VOLVO** VT2014B-VT(O)2214B-VT2514B(OD)
Suitable To:



All original equipment manufacturers numbers, symbols, pictures, models and description used in this catalogue are for reference only, and it is not implied that any part listed is the product of these manufactures. Tutti i nostri particolari non sono originali ma con essi intercambiabili. I riferimenti originali, le figure, i modelli sono esposti a semplice titolo indicativo. La nostra produzione riporta il nostro marchio.

Models

- VT 2014 FM7 - FH12 - FM12 - FH16 - NH12
- VT(O) 2214B FM9 - FH12 - FM12
- VT 2514(OD) FM7 - FH12 - FM12 - FH16 - NH12



| Fig. | CEI no. | Rif. VOLVO | Description | Q.ty | Note | VT2014B | VT2214B | VTO2214B | VT2514B | VT2514B(OD) |
|------|---------|------------|--------------------------------|------|----------------------|---------|---------|----------|---------|-------------|
| 1 | 135.178 | 20366711 | Front Cover | 1 | | ● | ● | ● | ● | ● |
| 2 | 139.750 | 20476025 | Oil Seal 64,9x90x10 | 1 | | ● | ● | ● | ● | ● |
| 3 | 130.590 | 1656129 | Bearing 70x150x40 | 1 | Oem | ● | ● | ● | ● | ● |
| 3 | 530.590 | 1656129 | Bearing 70x150x40 | 1 | A.Market | ● | ● | ● | ● | ● |
| 4 | 137.230 | 1654088 | Needle Bearing 92x100x26,6 | 1 | | ● | ● | ● | ● | ● |
| 5 | 145.780 | 20854441 | Constant Gear 31 T | 1 | | ● | ● | | | |
| 5 | 145.781 | 20776785 | Constant Gear 34 T | 1 | | | | ● | | ● |
| 5 | 145.782 | 20776783 | Constant Gear 31 T | 1 | | | | | ● | |
| 6 | 109.355 | 1673541 | Synchronizer Cone | 2 | (A) | ● | ● | ● | ● | ● |
| 6 | 109.833 | 20760515 | Synchronizer Cone | 2 | (B) | ● | ● | ● | ● | ● |
| 7 | 119.186 | 1521438 | Synchronizer Ring | 2 | | ● | ● | ● | ● | ● |
| 8 | 102.342 | 20781951 | Input Shaft 54 T | 1 | 10 Splines | ● | | | ● | ● |
| 8 | 102.343 | 20904803 | Input Shaft 54 T | 1 | 24 Splines | | ● | ● | | |
| 9 | 130.594 | 1656116 | Roller Bearing 40x38 | 1 | | ● | ● | ● | ● | ● |
| 10 | 154.311 | 1673540 | Sliding Sleeve | 1 | (A) | ● | ● | ● | ● | ● |
| 10 | 154.463 | 20760512 | Sliding Sleeve | 1 | (B) | ● | ● | ● | ● | ● |
| 11 | 187.680 | 1521449 | Nut | 1 | | ● | ● | ● | ● | ● |
| 12 | 141.045 | 382565 | Sliding Block | 2 | | ● | ● | ● | ● | ● |
| 13 | 160.246 | 20766774 | Pin | 4 | | ● | ● | ● | ● | ● |
| 14 | 156.189 | 20845477 | Spring | 4 | | ● | ● | ● | ● | ● |
| 15 | 137.792 | 1521596 | Bearing cone 65x36 mm | 2 | Oem | ● | ● | ● | ● | ● |
| 15 | 537.792 | 1521596 | Bearing cone 65x36 mm | 2 | A.Market | ● | ● | ● | ● | ● |
| 17 | 146.561 | 8172640 | Gear 3rd Speed 29 T | 1 | | ● | ● | ● | ● | ● |
| 18 | 109.356 | 1521878 | Synchronizer Cone | 1 | | ● | ● | ● | ● | ● |
| 19 | 119.187 | 3192951 | Synchronizer Ring Inner | 1 | | ● | ● | ● | ● | ● |
| 20 | 119.189 | 1069254 | Synchronizer Ring Intermediate | 1 | | ● | ● | ● | ● | ● |
| 21 | 119.188 | 1069255 | Synchronizer Ring Outer | 1 | | ● | ● | ● | ● | ● |
| 22 | 169.811 | 1521890 | Plate Pusher | 1 | | ● | ● | ● | ● | ● |
| 22 | 169.816 | 3192111 | Plate pusher | 1 | For Automatic Models | ● | ● | ● | ● | ● |
| 23 | 154.310 | 20478729 | Sliding Sleeve | 1 | | ● | ● | ● | ● | ● |
| 24 | 169.814 | 1521886 | Ring | 1 | | ● | ● | ● | ● | ● |
| 25 | 157.645 | 1521979 | Synchronizer Hub | 1 | | ● | ● | ● | ● | ● |
| 26 | 169.815 | 8172218 | Lock Plate | 1 | | ● | ● | ● | ● | ● |
| 27 | 160.207 | 8171413 | Slide | 4 | | ● | ● | ● | ● | ● |
| 28 | 156.183 | 1069474 | Spring | 4 | | ● | ● | ● | ● | ● |
| 29 | 160.206 | 1521870 | Pin | 2 | | ● | ● | ● | ● | ● |
| 30 | 156.181 | 8172433 | Spring | 2 | | ● | ● | ● | ● | ● |
| 31 | 141.045 | 382565 | Sliding Block | 2 | | ● | ● | ● | ● | ● |
| 32 | 145.784 | 1521413 | Gear 1st Speed 46 T | 1 | | ● | ● | ● | ● | ● |
| 33 | 137.246 | 1521453 | Needle Cage 85x93x62,5 | 1 | | ● | ● | ● | ● | ● |
| 34 | 109.356 | 1521878 | Synchronizer Cone | 1 | | ● | ● | ● | ● | ● |
| 35 | 119.187 | 3192951 | Synchronizer Ring Inner | 2 | | ● | ● | ● | ● | ● |
| 36 | 119.189 | 1069254 | Synchronizer Ring Intermediate | 2 | | ● | ● | ● | ● | ● |
| 37 | 119.188 | 1069255 | Synchronizer Ring Outer | 2 | | ● | ● | ● | ● | ● |
| 38 | 169.811 | 1521890 | Plate Pusher | 2 | | ● | ● | ● | ● | ● |

Notes

- (A) To be coupled together
 (B) To be coupled together
 (C) To be coupled together
 (D) To be coupled together

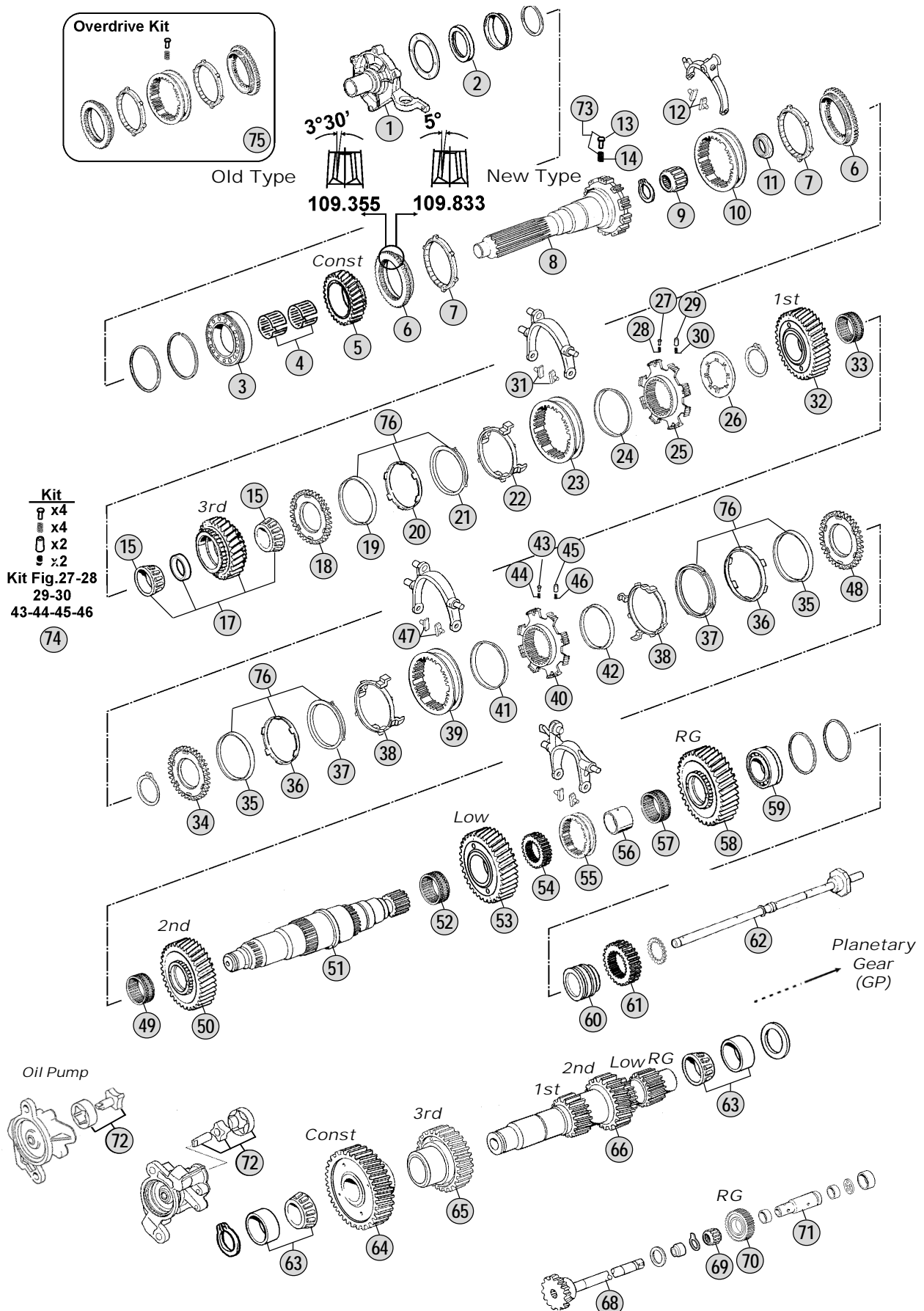
Date

04 / 2012

Table

160A

Adattabile a: **VOLVO** VT2014B-VT(O)2214B-VT2514B(OD)
 Suitable To:



All original equipment manufacturers numbers, symbols, pictures, models and description used in this catalogue are for reference only, and it is not implied that any part listed is the product of these manufactures. Tutti i nostri particolari non sono originali ma con essi intercambiabili. I riferimenti originali, le figure, i modelli sono esposti a semplice titolo indicativo. La nostra produzione riporta il nostro marchio.

Models

- VT 2014 FM7 - FH12 - FM12 - FH16 - NH12
- VT(O) 2214B FM9 - FH12 - FM12
- VT 2514(OD) FM7 - FH12 - FM12 - FH16 - NH12

| Fig. | CEI no. | Rif. VOLVO | Description | Q.ty | Note | VT2014B | VT2214B | VTO2214B | VT2514B | VT2514B(OD) |
|------|---------|------------|----------------------------|------|----------------------------|---------|---------|----------|---------|-------------|
| 38 | 169.816 | 3192111 | Plate pusher | 2 | For Automatic Models | ● | ● | ● | ● | ● |
| 39 | 154.309 | 20588775 | Sliding Sleeve | 1 | | ● | ● | ● | ● | ● |
| 40 | 157.644 | 20858492 | Synchronizer Hub | 1 | | ● | ● | ● | ● | ● |
| 41 | 169.813 | 8171735 | Ring | 1 | | ● | ● | ● | ● | ● |
| 41 | 169.817 | 20588777 | Ring | 1 | | ● | ● | ● | ● | ● |
| 42 | 169.818 | 1521827 | Ring | 1 | | ● | ● | ● | ● | ● |
| 42 | 169.812 | 1069888 | Ring | 1 | | ● | ● | ● | ● | ● |
| 43 | 160.207 | 8171413 | Slide | 4 | | ● | ● | ● | ● | ● |
| 44 | 156.183 | 1069474 | Spring | 4 | | ● | ● | ● | ● | ● |
| 45 | 160.206 | 1521870 | Pin | 2 | | ● | ● | ● | ● | ● |
| 46 | 156.181 | 8172433 | Spring | 2 | | ● | ● | ● | ● | ● |
| 47 | 141.045 | 382565 | Sliding Block | 2 | | ● | ● | ● | ● | ● |
| 48 | 109.380 | 1521879 | Synchronizer Cone | 1 | | ● | ● | ● | ● | ● |
| 49 | 137.247 | 1521452 | Needle Cage 95x103x59,5 | 1 | | ● | ● | ● | ● | ● |
| 50 | 145.785 | 1521917 | Gear 2nd Speed 39 T | 1 | | ● | ● | ● | | |
| 50 | 145.786 | 1521414 | Gear 2nd Speed 39 T | 1 | (C) | | | | ● | ● |
| 50 | 145.987 | 20539766 | Gear 2nd Speed 39 T | 1 | (D) Reinforced Type | | | | ● | ● |
| 51 | 103.182 | 1521406 | Main Shaft | 1 | | ● | ● | ● | ● | ● |
| 52 | 137.196 | 1652575 | Needle Cage 90x98x45,50 | 1 | | ● | ● | ● | ● | ● |
| 53 | 145.787 | 1521909 | Gear Low 38 T | 1 | | ● | ● | ● | | |
| 53 | 145.788 | 1521907 | Gear Low 37 T | 1 | (C) | | | | ● | ● |
| 53 | 145.988 | 20539768 | Gear Low Speed 37 T | 1 | (D) Reinforced Type | | | | ● | ● |
| 54 | 157.682 | 1521939 | Hub | 1 | Old Type w/Sleeve 3192251 | ● | ● | ● | ● | ● |
| 54 | 157.683 | 20366735 | Hub | 1 | New Type w/Sleeve 20366826 | ● | ● | ● | ● | ● |
| 55 | 154.350 | 3192251 | Sliding Sleeve | 1 | Old Type With Hub 1521939 | ● | ● | ● | ● | ● |
| 55 | 154.198 | 20366826 | Sliding Sleeve | 1 | New Type With Hub 20366735 | ● | ● | ● | ● | ● |
| 56 | 117.350 | 1652578 | Bush | 1 | | ● | ● | ● | ● | ● |
| 57 | 137.196 | 1652575 | Needle Cage 90x98x45,50 | 1 | | ● | ● | ● | ● | ● |
| 58 | 147.216 | 3152722 | Reverse Gear 34 T | 1 | | ● | ● | ● | ● | ● |
| 59 | 130.590 | 1656129 | Bearing 70x150x40 | 1 | | ● | ● | ● | ● | ● |
| 60 | 117.348 | 1656232 | Spacer | 1 | | ● | ● | ● | ● | ● |
| 61 | 157.610 | 1656226 | Sun Gear 24 T | 1 | | ● | ● | ● | | |
| 61 | 157.684 | 1521910 | Sun Gear 24 T | 1 | | | | | ● | ● |
| 62 | 188.186 | 1656264 | Oil Tube | 1 | | ● | ● | ● | ● | ● |
| 63 | 130.565 | 1652563 | Bearing Cone 110x60x39,50 | 2 | | ● | ● | ● | ● | ● |
| 64 | 146.562 | 1521913 | Constant Gear 44 T | 1 | | ● | ● | | | |
| 64 | 146.563 | 3152730 | Constant Gear 31 T | 1 | | | | ● | | ● |
| 64 | 146.564 | 20854437 | Constant Gear 44 T | 1 | | | | | ● | |
| 65 | 146.565 | 20854435 | Gear 3rd Speed 33 T | 1 | | ● | ● | ● | | |
| 65 | 146.566 | 1521421 | Gear 3rd Speed 33 T | 1 | | | | | ● | ● |
| 66 | 105.177 | 1521930 | Countershaft 12/12/29/22 T | 1 | | ● | ● | ● | | |
| 66 | 105.178 | 20883244 | Countershaft 12/12/29/22 T | 1 | (C) | | | | ● | ● |
| 66 | 105.227 | 20539764 | Countershaft 12/12/29/22 T | 1 | (D) Reinforced Type | | | | ● | ● |
| 68 | 107.195 | 3192293 | Oil Pump Shaft | 1 | | ● | ● | ● | ● | ● |
| 69 | 137.229 | 1652581 | Needle Cage 42x50x60 | 1 | | ● | ● | ● | ● | ● |

Notes

- (A) To be coupled together
 (B) To be coupled together
 (C) To be coupled together
 (D) To be coupled together

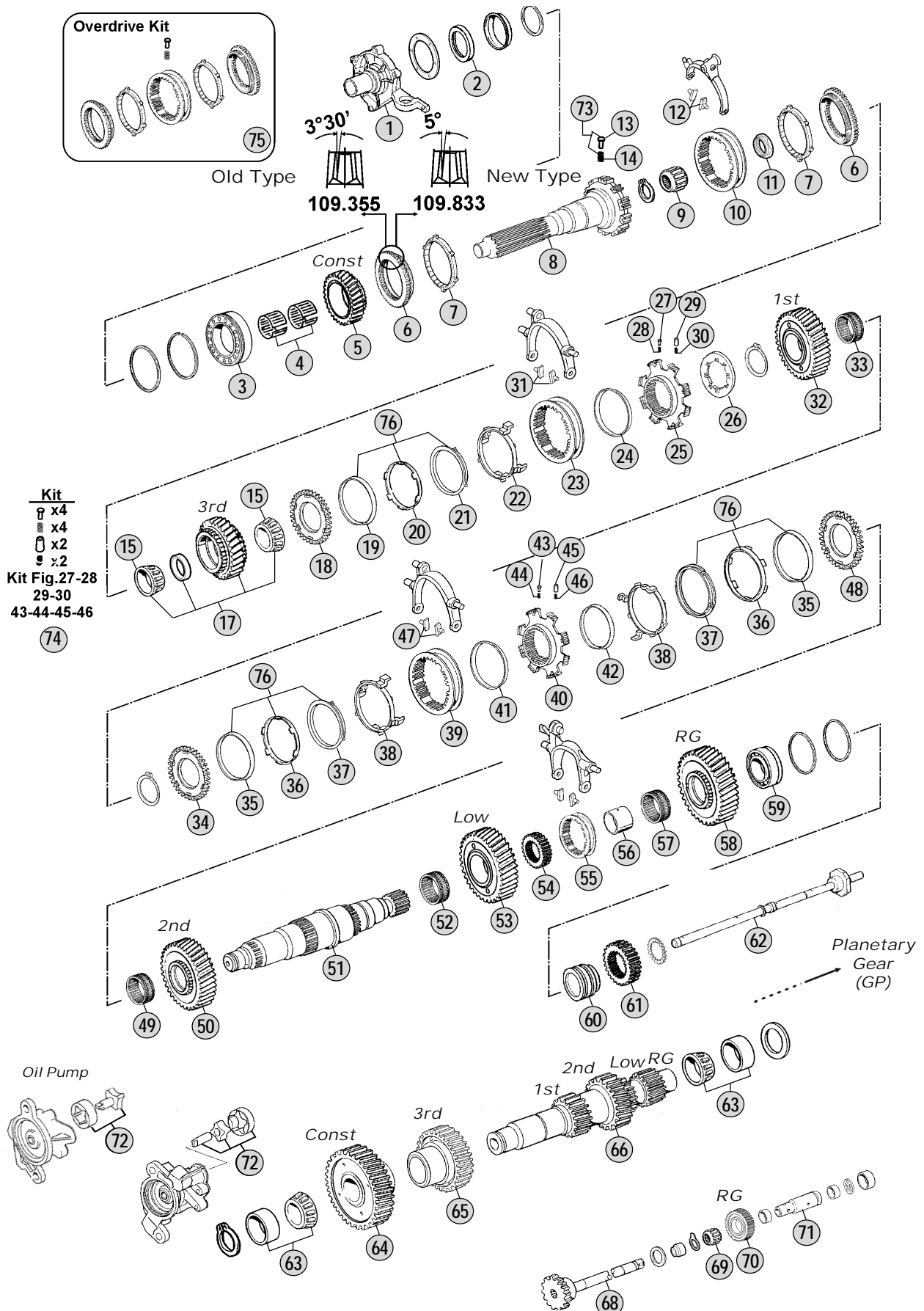
Date

04 / 2012

Table

160A

Adattabile a: **VOLVO** VT2014B-VT(O)2214B-VT2514B(OD)
Suitable To:



All original equipment manufacturers' numbers, symbols, pictures, models and description used in this catalogue are for reference only, and it is not implied that any part listed is the product of these manufactures. Tutti i nostri particolari non sono originali ma con essi intercambiabili. I riferimenti originali, le figure, i modelli sono esposti a semplice titolo indicativo. La nostra produzione riporta il nostro marchio.

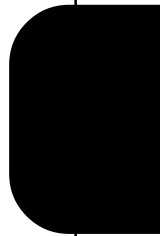
Models

- VT 2014 FM7 - FH12 - FM12 - FH16 - NH12
- VT(O) 2214B FM9 - FH12 - FM12
- VT 2514(OD) FM7 - FH12 - FM12 - FH16 - NH12



| Fig. | CEI no. | Rif. VOLVO | Description | Q.ty | Note | VT2014B | VT2214B | VTO2214B | VT2514B | VT2514B(OD) |
|------|---------|------------|---------------------------|------|--------------|---------|---------|----------|---------|-------------|
| 70 | 147.195 | 1521423 | Reverse Gear 20 T | 1 | | • | • | • | • | • |
| 71 | 107.182 | 20366756 | Reverse Pin | 1 | | • | • | • | • | • |
| 72 | 198.888 | 1521787 | Oil Pump Gear Kit | 1 | | • | • | • | • | • |
| 73 | 298.048 | 20845497 | Pins/Springs kit | 1 | | • | • | • | • | • |
| 74 | 298.138 | 20847116 | Pins/Springs Kit | 1 | | • | • | • | • | • |
| 75 | 298.844 | CEI 298844 | Synchro Kit | 1 | (B) New Type | • | • | • | • | • |
| 76 | 298.846 | CEI 298846 | Synchro Kit 3rd/4th Speed | 1 | | • | • | • | • | • |
| | | | | | | | | | | |
| | | | | | | | | | | |
| | | | | | | | | | | |
| | | | | | | | | | | |
| | | | | | | | | | | |
| | | | | | | | | | | |
| | | | | | | | | | | |
| | | | | | | | | | | |
| | | | | | | | | | | |
| | | | | | | | | | | |
| | | | | | | | | | | |
| | | | | | | | | | | |
| | | | | | | | | | | |
| | | | | | | | | | | |
| | | | | | | | | | | |
| | | | | | | | | | | |
| | | | | | | | | | | |
| | | | | | | | | | | |
| | | | | | | | | | | |
| | | | | | | | | | | |
| | | | | | | | | | | |
| | | | | | | | | | | |
| | | | | | | | | | | |
| | | | | | | | | | | |
| | | | | | | | | | | |
| | | | | | | | | | | |
| | | | | | | | | | | |
| | | | | | | | | | | |
| | | | | | | | | | | |
| | | | | | | | | | | |
| | | | | | | | | | | |
| | | | | | | | | | | |
| | | | | | | | | | | |
| | | | | | | | | | | |
| | | | | | | | | | | |

All original equipment manufacturer's numbers, symbols, pictures, models and description used in this catalogue are for reference only, and it is not implied that any part listed is the product of these manufactures.
 Tutti i nostri particolari non sono originali ma con essi intercambiabili. I riferimenti originali, le figure, i modelli sono esposti a semplice titolo indicativo. La nostra produzione riporta il nostro marchio.



Notes

- (A) To be coupled together
- (B) To be coupled together
- (C) To be coupled together
- (D) To be coupled together

Date

04 / 2012

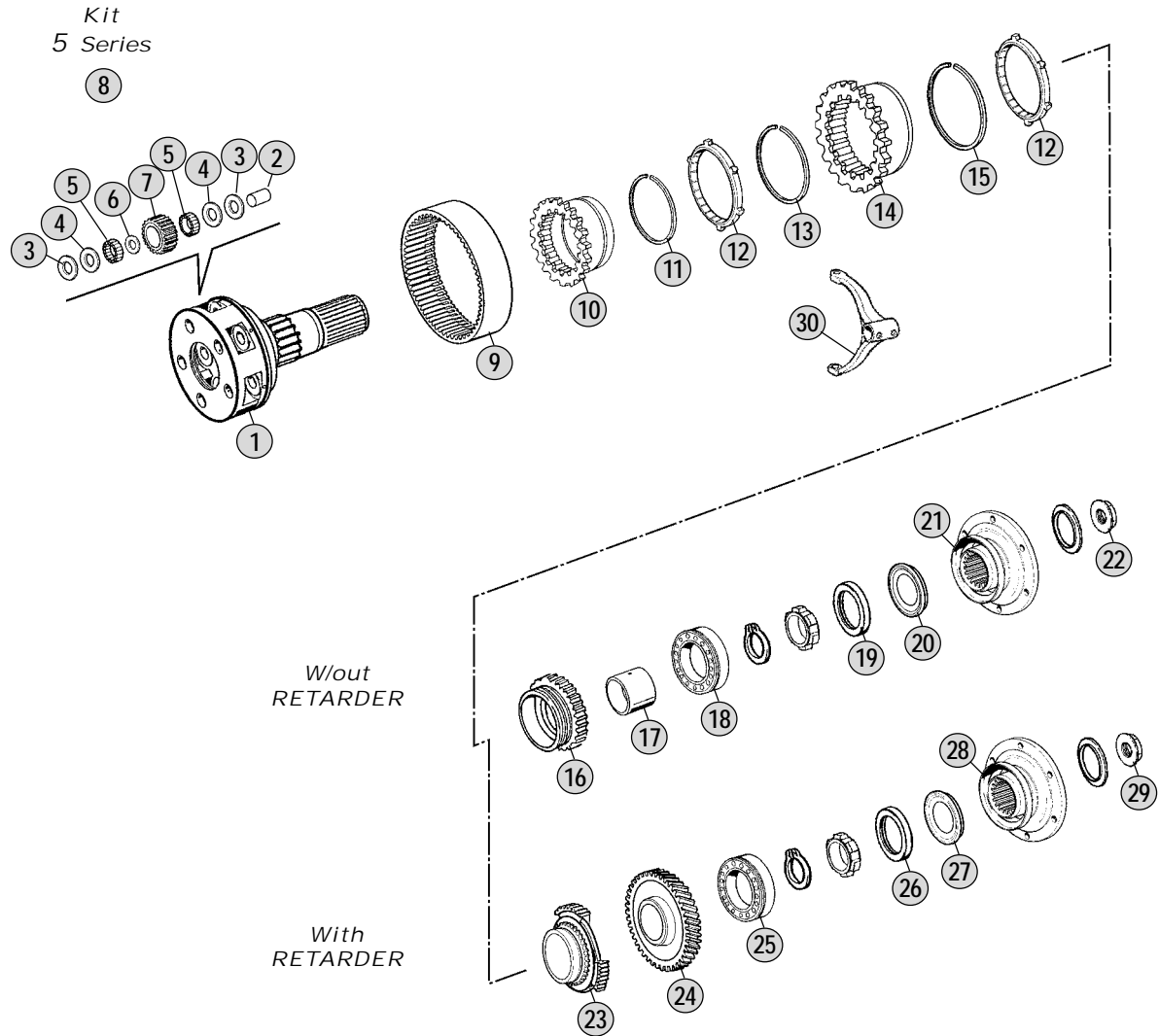
Table

160/A



Adattabile a : **VOLVO**
 Suitable To :

VT2014B-VT(O)2214B-VT2514(OD)



All original equipment manufacturers' numbers, symbols, models and description used in this catalogue are for reference only, and it is not implied that any part listed is the product of these manufactures.
 Tutti i nostri particolari non sono originali ma con essi intercambiabili. I riferimenti originali, le figure, i modelli sono esposti a semplice titolo indicativo. La nostra produzione riporta il nostro marchio.

Models

VT 2014 FM7 - FH12 - FM12 - FH16 - NH12

VT(O) 2214B FM9 - FH12 - FM12

VT 2514(OD) FM7 - FH12 - FM12 - FH16 - NH12

| Fig. | CEI no. | Rif. VOLVO | Description | Q.ty | Note | VT2014 | VT2214B | VTO2214B | VT2514 | VT2514(OD) |
|------|---------|------------|---------------------------|------|-------------------------|--------|---------|----------|--------|------------|
| 1 | 190.344 | 1673844 | Planetary Carrier | 1 | Complete-W/out Retarder | ● | ● | ● | | |
| 1 | 190.362 | 1521407 | Planetary Carrier | 1 | Complete-W/out Retarder | | | | ● | ● |
| 1 | 190.363 | 1673842 | Planetary Carrier | 1 | Complete-With Retarder | ● | ● | ● | | |
| 1 | 190.364 | 1672203 | Planetary Carrier | 1 | Complete-With Retarder | | | | ● | ● |
| 2 | 107.169 | 1654054 | Planetary Pin | 5 | | ● | ● | ● | ● | ● |
| 3 | 169.780 | 8171167 | Washer 33,5x61x1 (Bronze) | 10 | | ● | ● | ● | ● | ● |
| 4 | 169.779 | 8171165 | Washer 33,5x61x1 (Steel) | 10 | | ● | ● | ● | ● | ● |
| 5 | 171.051 | 1656113 | Needle 6x18,80 | 200 | | ● | ● | ● | ● | ● |
| 6 | 169.781 | 267375 | Spacer 36x44x2 | 5 | | ● | ● | ● | ● | ● |
| 7 | 157.216 | 1656208 | Planet Pinion 19 T | 5 | | ● | ● | | | |
| 7 | 157.685 | 1521911 | Planet Pinion 19 T | 5 | | | | | ● | ● |
| 8 | 198.834 | 276115 | Pins/Sides Kit | 1 | | ● | ● | ● | | |
| 8 | 298.290 | 85107014 | Repair Kit | 1 | | | | | ● | ● |
| 9 | 123.233 | 1656209 | Crown Gear 66 T | 1 | | ● | ● | ● | ● | ● |
| 10 | 157.609 | 1668452 | Hub | 1 | | ● | ● | ● | ● | ● |
| 11 | 111.213 | 943760 | Lock Ring | 1 | | ● | ● | ● | ● | ● |
| 12 | 119.159 | 1668456 | Synchronizer Ring | 2 | | ● | ● | ● | ● | ● |
| 13 | 111.211 | 1668459 | Lock Ring | 1 | | ● | ● | ● | ● | ● |
| 14 | 150.146 | 1068946 | Carrier Hub GP | 1 | | ● | ● | ● | ● | ● |
| 15 | 111.212 | 8171420 | Lock Ring | 1 | | ● | ● | ● | ● | ● |
| 16 | 109.185 | 1668450 | Synchronizer Cone | 1 | W/out Retarder | ● | ● | ● | ● | ● |
| 17 | 117.376 | 1669997 | Bush | 1 | W/out Retarder | ● | ● | ● | ● | ● |
| 18 | 130.566 | 1652604 | Bearing 70x140x26 | 1 | W/out Retarder | ● | ● | ● | ● | ● |
| 19 | 139.560 | 1652776 | Oil Seal 90x145x10 | 1 | W/out Retarder | ● | ● | ● | ● | ● |
| 20 | 139.561 | 1652622 | Oil Seal 90x111x6/8 | 1 | W/out Retarder | ● | ● | ● | ● | ● |
| 21 | 197.126 | 8172618 | Output Flange | 1 | W/out Retarder | ● | ● | ● | ● | ● |
| 22 | 187.613 | 8171338 | Grooved Nut | 1 | W/out Retarder | ● | ● | ● | ● | ● |
| 23 | 109.381 | 1672262 | Synchronizer Cone | 1 | With Retarder | ● | ● | ● | ● | ● |
| 24 | 145.789 | 1521257 | Retarder Gear 63 T | 1 | With Retarder | ● | ● | ● | ● | ● |
| 25 | 130.566 | 1652604 | Bearing 70x140x26 | 1 | With Retarder | ● | ● | ● | ● | ● |
| 26 | 139.560 | 1652776 | Oil Seal 90x145x10 | 1 | With Retarder | ● | ● | ● | ● | ● |
| 27 | 139.561 | 1652622 | Oil Seal 90x111x6/8 | 1 | With Retarder | ● | ● | ● | ● | ● |
| 28 | 197.127 | 8172622 | Output Flange | 1 | With Retarder | ● | ● | ● | ● | ● |
| 29 | 187.613 | 8171338 | Grooved Nut | 1 | With Retarder | ● | ● | ● | ● | ● |
| 30 | 141.167 | 1652919 | Fork | 1 | | ● | ● | ● | ● | ● |

Notes

Date

04 / 2012

Table

160_B