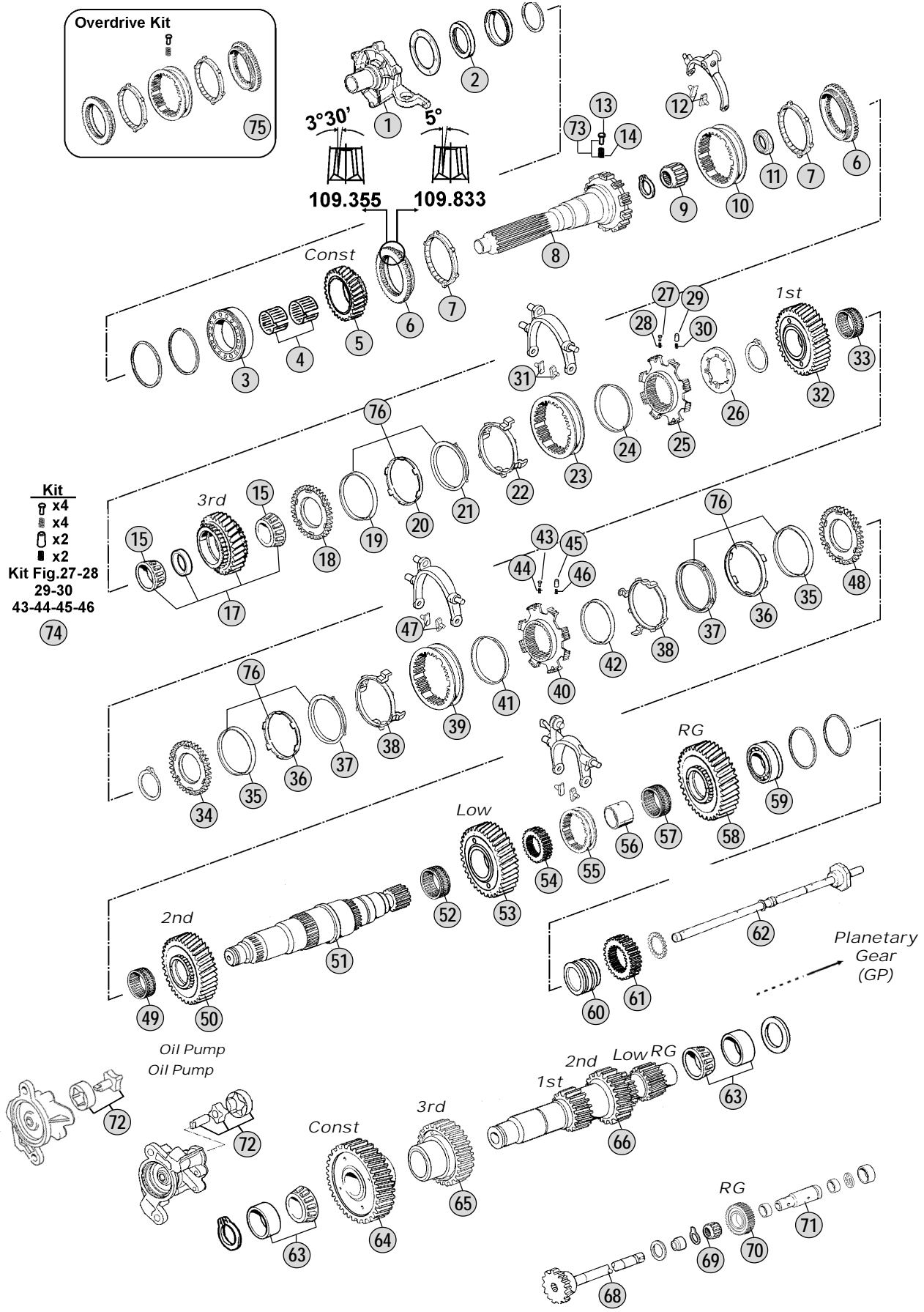


Adattabile a : **VOLVO**
Suitable To :

Modelli Cambio/ Gearbox Models
VT(O)2814B



All original equipment manufacturers' numbers, symbols, and description used in this catalogue are for reference only, and it is not implied that any part listed is the product of these manufactures. Tutti i nostri particolari non sono originali ma con essi intercambiabili. I riferimenti originali, le figure, i modelli sono esposti a semplice titolo indicativo. La nostra produzione riporta il nostro marchio.

Models

VT(O)2814B FM9 - FH12 - FH13 - FM12 - FH16 - NH12



Fig.	CEI no.	Rif. VOLVO	Description	Q.ty	Note	VT2814B	VTO2814B			
1	135.178	20366711	Front Cover	1		●	●			
2	139.750	20476025	Oil Seal 64,9x90x10	1		●	●			
3	130.590	1656129	Bearing 70x150x40	1	Oem	●	●			
3	530.590	1656129	Bearing 70x150x40	1	A.Market	●	●			
4	137.230	1654088	Needle Bearing 92x100x26,6	1		●	●			
5	145.782	20776783	Constant Gear 31 T	1		●				
5	145.985	20366955	Constant Gear 38 T	1			●			
6	109.355	1673541	Synchronizer Cone	2	(A)	●	●			
6	109.833	20760515	Synchronizer Cone	2	(B)	●	●			
7	119.186	1521438	Synchronizer Ring	2		●	●			
8	102.343	20904803	Input Shaft 54 T	1	24 Splines	●	●			
9	130.594	1656116	Roller Bearing 40x38	1		●	●			
10	154.311	1673540	Sliding Sleeve	1	(A)	●	●			
10	154.463	20760512	Sliding Sleeve	1	(B)	●	●			
11	187.680	1521449	Nut	1		●	●			
12	141.045	382565	Sliding Block	2		●	●			
13	160.246	20766774	Pin	4		●	●			
14	156.189	20845477	Spring	4		●	●			
15	137.792	1521596	Bearing cone 65x36 mm	2	Oem	●	●			
15	537.792	1521596	Bearing cone 65x36 mm	2	A.Market	●	●			
17	146.561	8172640	Gear 3rd Speed 29 T	1		●				
17	145.986	20537776	Gear 3rd Speed	1			●			
18	109.356	1521878	Synchronizer Cone	1		●	●			
19	119.187	3192951	Synchronizer Ring Inner	1		●	●			
20	119.189	1069254	Synchronizer Ring Intermediate	1		●	●			
21	119.188	1069255	Synchronizer Ring Outer	1		●	●			
22	169.811	1521890	Plate Pusher	1		●	●			
22	169.816	3192111	Plate pusher	1	For Automatic Models	●	●			
23	154.310	20478729	Sliding Sleeve	1		●	●			
24	169.814	1521886	Ring	1		●	●			
25	157.645	1521979	Synchronizer Hub	1		●	●			
26	169.815	8172218	Lock Plate	1		●	●			
27	160.207	8171413	Slide	4		●	●			
28	156.183	1069474	Spring	4		●	●			
29	160.206	1521870	Pin	2		●	●			
30	156.181	8172433	Spring	2		●	●			
31	141.045	382565	Sliding Block	2		●	●			
32	145.784	1521413	Gear 1st Speed 46 T	1		●	●			
33	137.246	1521453	Needle Cage 85x93x62,5	1		●	●			
34	109.356	1521878	Synchronizer Cone	1		●	●			
35	119.187	3192951	Synchronizer Ring Inner	2		●	●			
36	119.189	1069254	Synchronizer Ring Intermediate	2		●	●			
37	119.188	1069255	Synchronizer Ring Outer	2		●	●			
38	169.811	1521890	Plate Pusher	2		●	●			
38	169.816	3192111	Plate pusher	2	For Automatic Models	●	●			

Notes

- (A) To be coupled together
(B) To be coupled together

Date

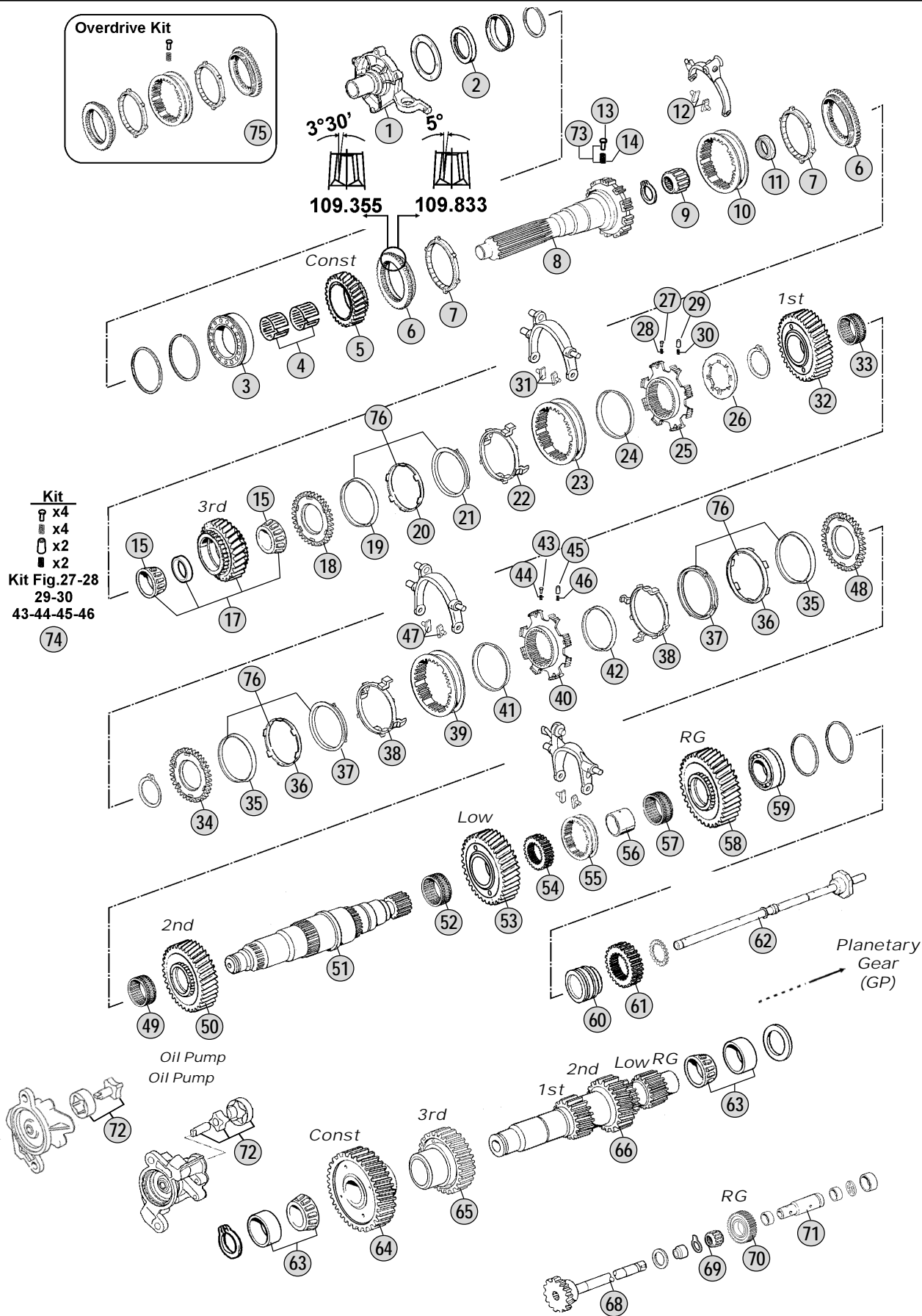
04 / 2012

Table

170/A

Adattabile a : **VOLVO**
 Suitable To :

Modelli Cambio/ Gearbox Models
VT(O)2814B



All original equipment manufacturers' numbers, symbols, and description used in this catalogue are for reference only, and it is not implied that any part listed is the product of these manufactures.
 Tutti i nostri particolari non sono originali ma con essi intercambiabili. I riferimenti originali, le figure, i modelli sono esposti a semplice titolo indicativo. La nostra produzione riporta il nostro marchio.

Models

VT(O)2814B FM9 - FH12 - FH13 - FM12 - FH16 - NH12



Fig.	CEI no.	Rif. VOLVO	Description	Q.ty	Note	VT2814B	VTO2814B			
39	154.309	20588775	Sliding Sleeve	1		●	●			
40	157.644	20858492	Synchronizer Hub	1		●	●			
41	169.813	8171735	Ring	1		●	●			
41	169.817	20588777	Ring	1		●	●			
42	169.818	1521827	Ring	1	Use Together with 20588777	●	●			
42	169.812	1069888	Ring	1	Use Together with 8171735	●	●			
43	160.207	8171413	Slide	4		●	●			
44	156.183	1069474	Spring	4		●	●			
45	160.206	1521870	Pin	2		●	●			
46	156.181	8172433	Spring	2		●	●			
47	141.045	382565	Sliding Block	2		●	●			
48	109.380	1521879	Synchronizer Cone	1		●	●			
49	137.247	1521452	Needle Cage 95x103x59,5	1		●	●			
50	145.987	20539766	Gear 2nd Speed 39 T	1		●	●			
51	103.182	1521406	Main Shaft	1		●	●			
52	137.196	1652575	Needle Cage 90x98x45,50	1		●	●			
53	145.988	20539768	Gear Low Speed 37 T	1		●	●			
54	157.683	20366735	Hub	1		●	●			
55	154.198	20366826	Sliding Sleeve	1		●	●			
56	117.350	1652578	Bush	1		●	●			
57	137.196	1652575	Needle Cage 90x98x45,50	1		●	●			
58	147.216	3152722	Reverse Gear 34 T	1		●	●			
59	130.590	1656129	Bearing 70x150x40	1		●	●			
60	117.348	1656232	Spacer	1		●	●			
61	157.684	1521910	Sun Gear 24 T	1		●	●			
62	188.186	1656264	Oil Tube	1		●	●			
63	130.565	1652563	Bearing Cone 110x60x39,50	2		●	●			
64	146.564	20854437	Constant Gear 44 T	1		●				
64	145.989	20366956	Constant Gear 34 T	1			●			
65	146.566	1521421	Gear 3rd Speed 33 T	1		●				
65	146.677	20366957	Gear 3rd Speed 37 T	1			●			
66	105.227	20539764	Countershaft 12/12/29/22 T	1		●	●			
68	107.195	3192293	Oil Pump Shaft	1		●	●			
69	137.229	1652581	Needle Cage 42x50x60	1		●	●			
70	147.195	1521423	Reverse Gear 20 T	1		●	●			
71	107.182	20366756	Reverse Pin	1		●	●			
72	198.888	1521787	Oil Pump Gear Kit	1		●	●			
73	298.048	20845497	Pins/Springs kit	1		●	●			
74	298.138	20847116	Pins/Springs Kit	1		●	●			
75	298.844	CEI 298844	Synchro Kit	1	(B) New Type	●	●			
76	298.846	CEI 298846	Synchro Kit 3rd/4th Speed	1		●	●			

Notes

- (A) To be coupled together
(B) To be coupled together

Date

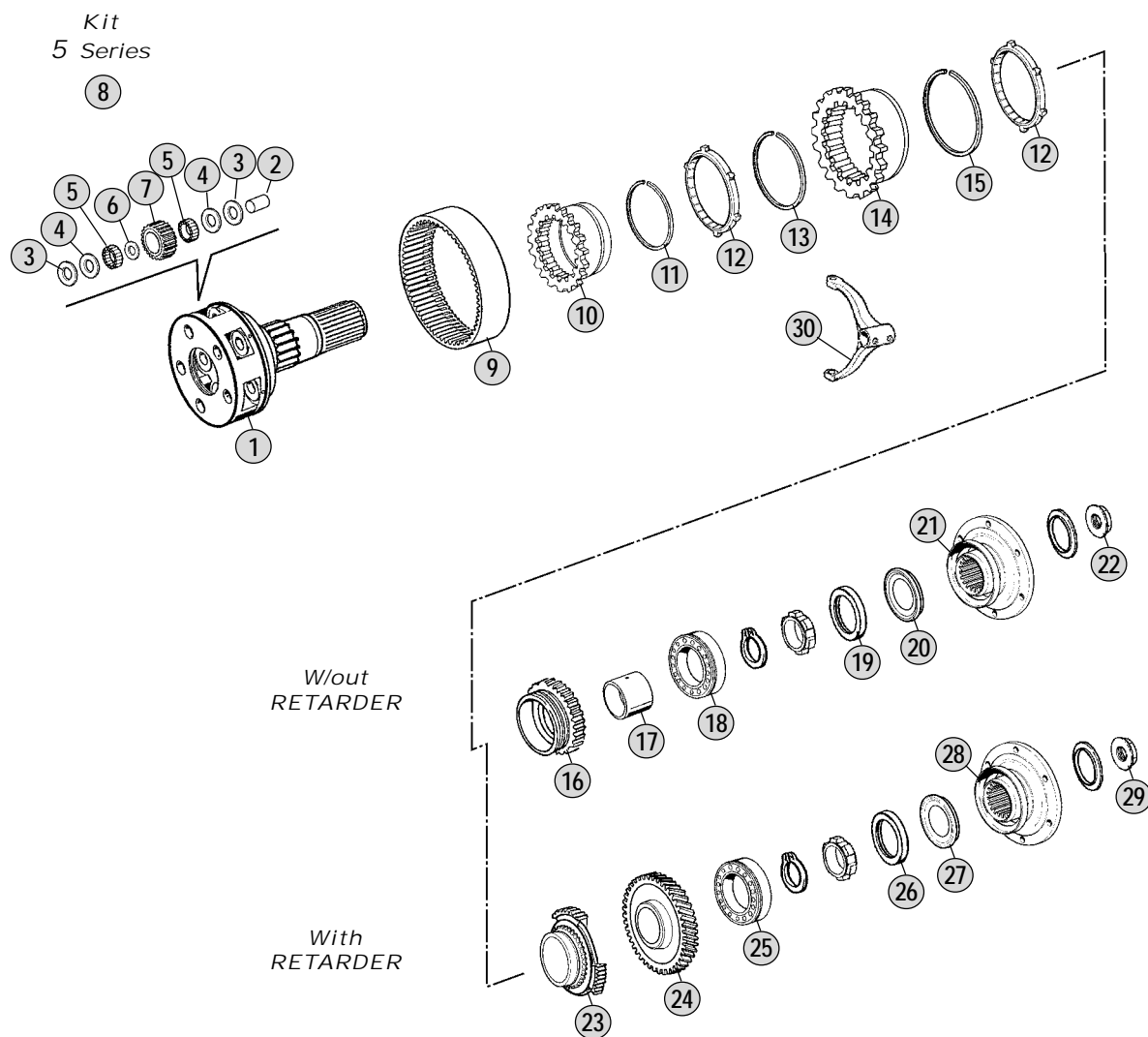
04 / 2012

Table

170/A

Adattabile a : **VOLVO**
 Suitable To :

Modelli Cambio/ Gearbox Models
VT(O)2814B



All original equipment manufacturers' numbers, symbols, pictures, models and description used in this catalogue are for reference only, and it is not implied that any part listed is the product of these manufactures.
 Tutti i nostri particolari non sono originali ma con essi intercambiabili. I riferimenti originali, le figure, i modelli sono esposti a semplice titolo indicativo. La nostra produzione riporta il nostro marchio.

Models

VT(O)2814B FM9 - FH12 - FH13 - FM12 - FH16 - NH12



Fig.	CEI no.	Rif. VOLVO	Description	Q.ty	Note	VT2814B	VTO2814B			
1	190.362	1521407	Planetary Carrier	1	Complete w/out Retarder	●	●			
1	190.364	1672203	Planetary Carrier	1	Complete With Retarder	●	●			
2	107.169	1654054	Planetary Pin	5		●	●			
3	169.780	8171167	Washer 33,5x61x1 (Bronze)	10		●	●			
4	169.779	8171165	Washer 33,5x61x1 (Steel)	10		●	●			
5	171.051	1656113	Needle 6x18,80	200		●	●			
6	169.781	267375	Spacer 36x44x2	5		●	●			
7	157.216	1656208	Planet Pinion 19 T	1		●	●			
8	298.290	85107014	Repair Kit	1		●	●			
9	123.233	1656209	Crown Gear 66 T	1		●	●			
10	157.609	1668452	Hub	1		●	●			
11	111.213	943760	Lock Ring	1		●	●			
12	119.159	1668456	Synchronizer Ring	2		●	●			
13	111.211	1668459	Lock Ring	1		●	●			
14	150.146	1068946	Carrier Hub GP	1		●	●			
15	111.212	8171420	Lock Ring	1		●	●			
16	109.185	1668450	Synchronizer Cone	1	W/out Retarder	●	●			
17	117.376	1669997	Bush	1	W/out Retarder	●	●			
18	130.566	1652604	Bearing 70x140x26	1	W/out Retarder	●	●			
19	139.560	1652776	Oil Seal 90x145x10	1	W/out Retarder	●	●			
20	139.561	1652622	Oil Seal 90x111x6/8	1	W/out Retarder	●	●			
21	197.126	8172618	Output Flange	1	W/out Retarder	●	●			
22	187.613	8171338	Grooved Nut	1	W/out Retarder	●	●			
23	109.381	1672262	Synchronizer Cone	1	With Retarder	●	●			
24	145.789	1521257	Retarder Gear 63 T	1	With Retarder	●	●			
25	130.566	1652604	Bearing 70x140x26	1	With Retarder	●	●			
26	139.560	1652776	Oil Seal 90x145x10	1	With Retarder	●	●			
27	139.561	1652622	Oil Seal 90x111x6/8	1	With Retarder	●	●			
28	197.127	8172622	Output Flange	1	With Retarder	●	●			
29	187.613	8171338	Grooved Nut	1	With Retarder	●	●			
30	141.167	1652919	Fork	1		●	●			

Notes

Date

04 / 2012

Table

170_B

All original equipment manufacturers' numbers, symbols, pictures, models and description used in this catalogue are for reference only, and it is not implied that any part listed is the product of these manufacturers.
 Tutti i nostri particolari non sono originali ma con essi intercambiabili. I riferimenti originali, le figure, i modelli sono esposti a semplice titolo indicativo. La nostra produzione riporta il nostro marchio.