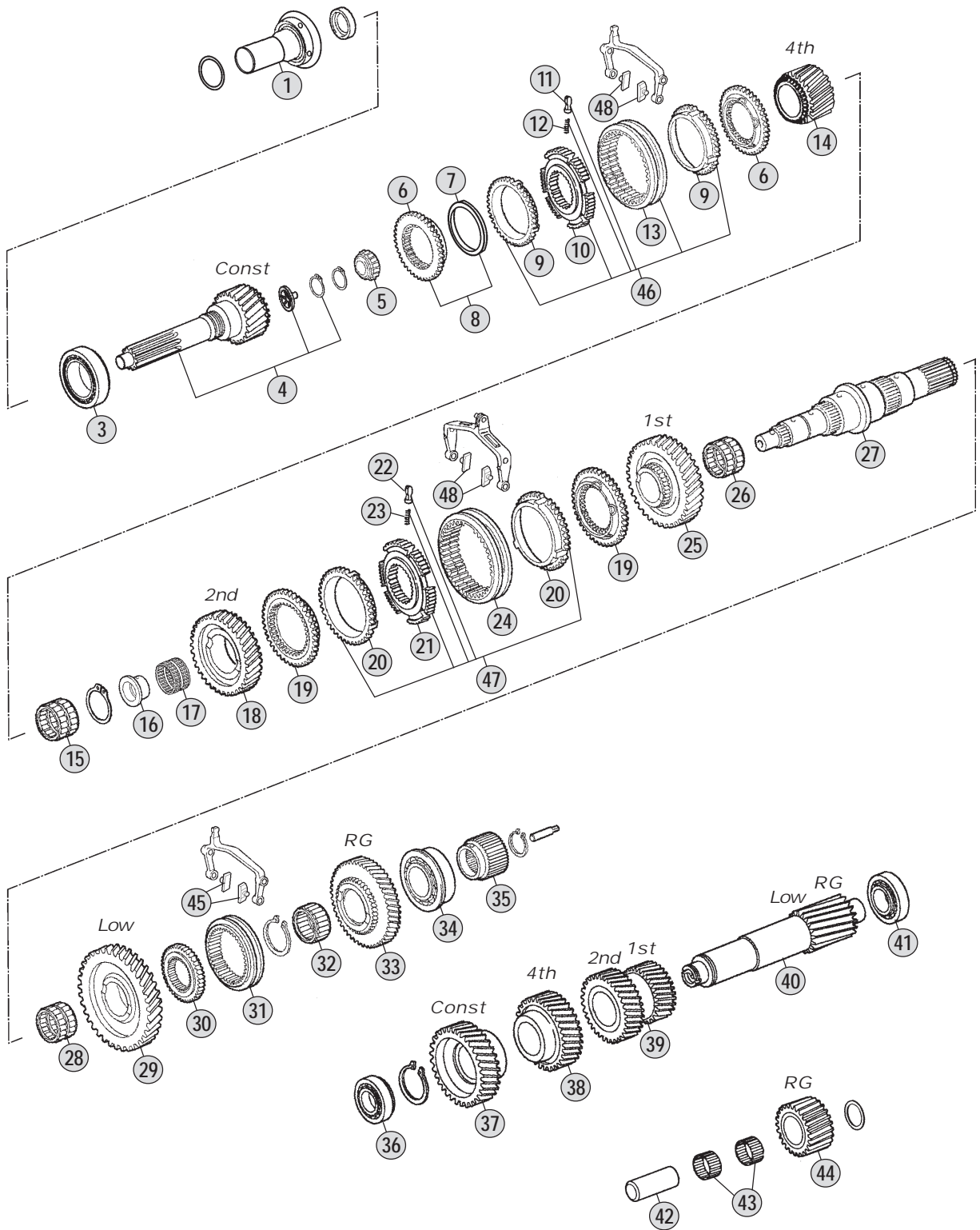


Adattabile a : **VOLVO**
Suitable To :

Modelli Cambio/ Gearbox Models
9S1100 (ZTO1109)



All original equipment manufacturers' numbers, symbols, pictures, models and description used in this catalogue are for reference only, and it is not implied that any part listed is the product of these manufactures. Tutti i nostri particolari non sono originali ma con essi intercambiabili. I riferimenti originali, le figure, i modelli sono esposti a semplice titolo indicativo. La nostra produzione riporta il nostro marchio.

Models

9S1100 : 9,48 - 0,75



Fig.	CEI no.	O.E.M. Reference		Description	Q.ty	Note	9S1100					
		ZF no.	VOLVO no.									
1	128.262	CEI 128262	20910589	Front Cover	1		●					
3	130.941	0750 117 799	20910587	Bearing	1		●					
4	190.490	1324 202 004	20853411	Input Shaft	1		●					
5	137.150	0750 117 232	3096877	Roller Bearing 42x81x40,30	1	Oem	●					
5	537.150	0750 117 232	3096877	Roller Bearing 42x81x40,30	1	A.Market	●					
6	109.801	1324 304 011	20853498	Synchronizer Cone	2		●					
7	115.029	0501 314 108	20853554	Oil Seal Ring 79x105,1x5,3	1		●					
8	298.187	1324 204 009	20853547	Synchro Kit Ring/Cone	1		●					
9	119.220	1311 304 255	3121711	Synchronizer Ring	2		●					
10	157.741	1324 304 006	20853538	Synchronizer Hub	1		●					
11	160.189	1297 304 436	20853449	Pressure Piece	3		●					
12	156.140	0732 040 409	20853453	Spring De. 6,5x23,50	3		●					
13	154.363	1304 304 664	20853540	Sliding Sleeve	1		●					
14	244.007	1324 304 003	20853493	Gear 4th Speed 27 T	1		●					
15	137.373	0735 321 563	21136501	Needle Cage	2		●					
16	117.377	1304 304 050	20853458	Bush	1		●					
17	137.074	0750 115 227	21136497	Needle Bearing 75x83x40	1		●					
18	244.173	1324 304 015	20853488	Gear 2nd Speed 30 T	1		●					
19	109.798	1324 304 013	20853436	Synchronizer Cone	2		●					
20	119.142	1268 304 594	20910593	Synchronizer Ring	2		●					
21	157.696	1304 304 591	20853443	Synchronizer Hub	1		●					
22	160.189	1297 304 436	20853449	Pressure Piece	3		●					
23	156.140	0732 040 409	20853453	Spring De. 6,5x23,50	3		●					
24	154.200	1304 304 597	20853445	Sliding Sleeve	1		●					
25	244.174	1324 304 001	20853429	Ingranaggio 1a Vel.	1		●					
26	137.142	0735 320 816	21136505	Needle Cage 75x83x23	2		●					
27	103.275	1324 304 005	20853295	Main Shaft	1		●					
28	137.257	0735 320 500	21136503	Needle Cage 75x83x35	1		●					
29	145.833	1304 304 543	20967962	Gear Low Speed 37 T	1		●					
30	157.698	1304 304 443	20853305	Synchronizer Hub	1		●					
31	154.362	1304 304 444	20853307	Sliding Sleeve	1		●					
32	137.147	0750 115 225	21136499	Needle Cage 60x68x39	1		●					
33	147.236	1304 304 553	20853318	Reverse Gear	1		●					
34	130.942	0750 117 844	20853424	Bearing	1		●					
35	157.768	1324 304 012	20853319	Sun Gear	1		●					
36	130.943	0750 117 881	21134098	Bearing	1		●					
37	146.749	1324 303 004	20853276	Constant Gear 33 T	1		●					
38	146.750	1324 303 003	20853275	Gear 1st Speed 37 T	1		●					
39	143.151	1324 303 002	21134102	Double Gear 1st/2nd Speed	1		●					
40	105.280	1324 303 001	20853418	Countershaft 14 T	1		●					
41	130.234	1246 203 007	20853421	Bearing 50,8x95,2x27,7	1		●					
42	107.156	1304 305 030	20852936	Reverse Shaft	1		●					
43	137.143	0735 358 192	21150382	Needle Cage 40x60x26	2		●					
44	147.296	1304 305 045	21491078	Reverse Gear	1		●					
45	141.168	1316 306 015	20853595	Sliding Block	2		●					

Notes

Date

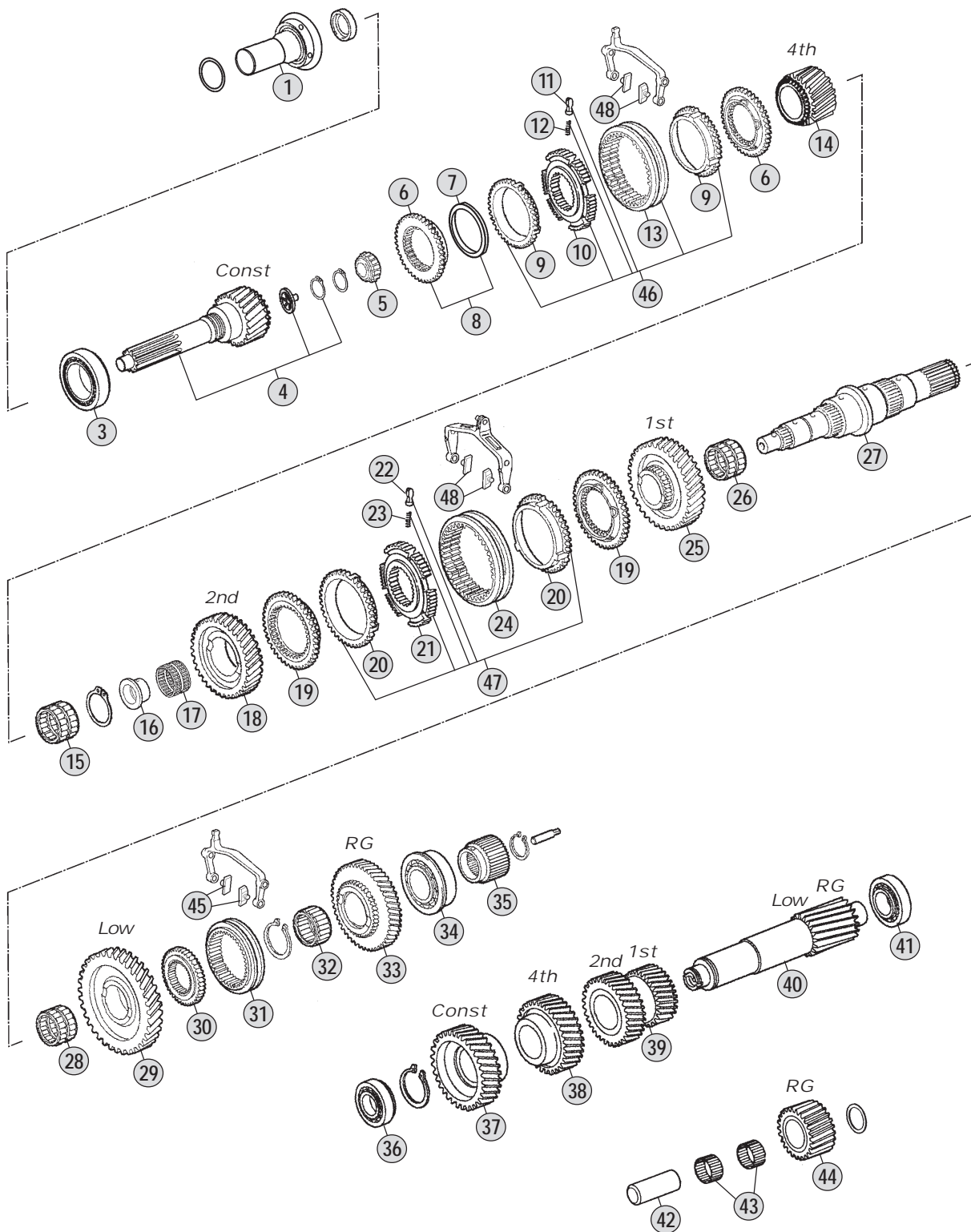
04 / 2012

Table

220/A

Adattabile a : **VOLVO**
 Suitable To :

Modelli Cambio/ Gearbox Models
9S1100 (ZTO1109)



All original equipment manufacturers' numbers, symbols, pictures, models and description used in this catalogue are for reference only, and it is not implied that any part listed is the product of these manufactures.
 Tutti i nostri particolari non sono originali ma con essi intercambiabili. I riferimenti originali, le figure, i modelli sono esposti a semplice titolo indicativo. La nostra produzione riporta il nostro marchio.

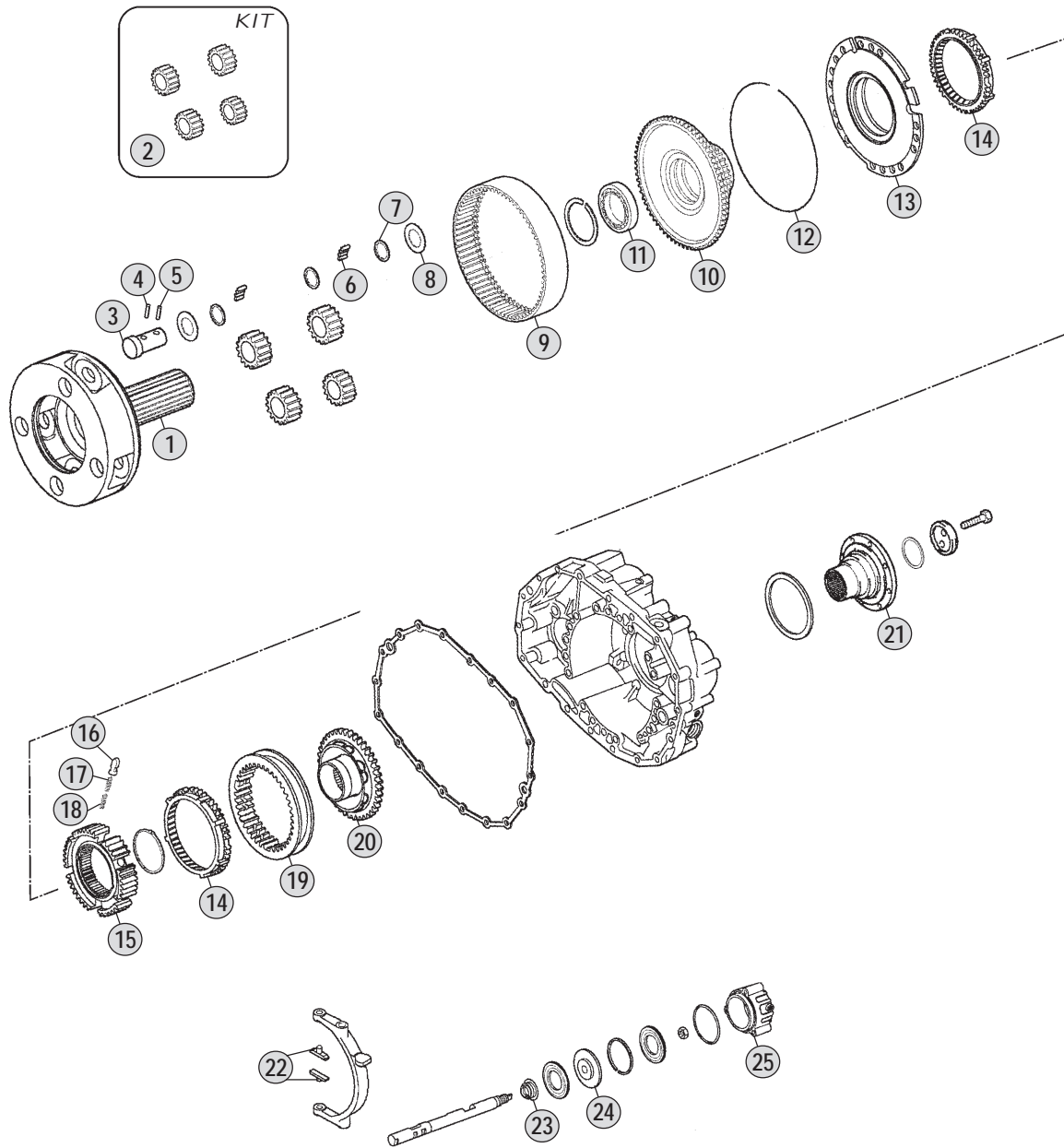
Models

9S1100 : 9,48 - 0,75



Adattabile a : **VOLVO**
Suitable To :

Modelli Cambio/ Gearbox Models
9S1100 (ZTO1109)



All original equipment manufacturers' numbers, symbols, pictures, models and description used in this catalogue are for reference only, and it is not implied that any part listed is the product of these manufactures. Tutti i nostri particolari non sono originali ma con essi intercambiabili. I riferimenti originali, le figure, i modelli sono esposti a semplice titolo indicativo. La nostra produzione riporta il nostro marchio.

Models

9S1100 : 9,48 - 0,75



Fig.	O.E.M. Reference		Description	Q.ty	Note	9S1100														
	CEI no.	ZF no.									VOLVO no.									
1	190.489	1324 232 004	20998120	Planetary Carrier	1	(1)	Empty	●												
2	298.810	1324 232 002		Planetary Gear set	1			●												
3	107.253	1324 332 012		Planetary pin	4			●												
4	160.240	0631 329 049	1339716	Lock Pin 5x22	4			●												
5	160.241	0631 329 175		Lock Pin 3x22	4			●												
6	171.044	0735 470 115		Roller 5x15,30	160			●												
7	169.397	0730 103 102		Spacer Ring Th. 1,50	12			●												
8	169.396	0501 304 692		Thrust Washer Th. 1,50	8			●												
9	123.325	1324 332 002	21462813	Crown Gear	1			●												
10	150.254	1324 332 007	20966903	Carrier Hub 114 T	1			●												
11	130.930	0735 330 904	20967924	Bearing	1			●												
12	111.175	0730 505 053	20853033	Locking Wire 2,50	1			●												
13	198.796	1304 233 006	20853016	Synchronizer Cone	1			●												
14	119.172	1296 333 045	1527458	Synchronizer Ring	2			●												
15	157.182	1313 333 001	20853013	Synchronizer Hub	1			●												
16	160.116	1240 304 278	6635324	Pressure Piece	9			●												
17	156.037	0732 040 385	6635322	Outer Spring De. 6x34	9			●												
18	156.036	0732 040 386	6635323	Inner Spring De. 3x34	9			●												
19	154.201	1304 333 011	20852995	Sliding Sleeve	1			●												
20	109.832	1324 233 001	21139360	Synchronizer Cone	1			●												
21	197.238	1304 238 004	21139362	Output Flange	1			●												
22	141.061	1272 334 003	6857243	Bronze Slide	1			●												
23	139.921	0750 112 047	3123295	Oil Seal	1			●												
24	189.711	1315 334 041	20852943	Piston	1			●												
25	132.083	1304 334 079	20852929	Cylinder	1			●												

Notes

(1) The Volvo reference 20998120 includes the Planetary Carrier with Repair Kit

Date

04 / 2012

Table

220/B