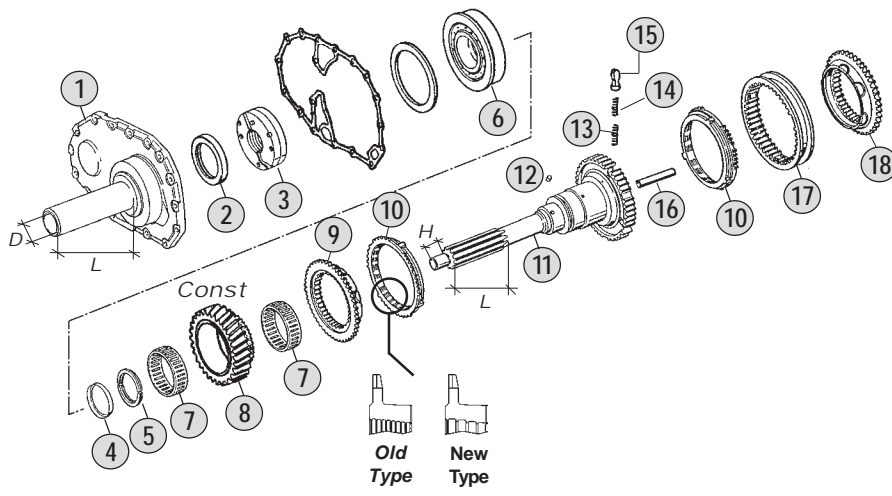


Adattabile a : **VOLVO**
 Suitable To :

Modelli Cambio/ Gearbox Models
16S130 - 16S160

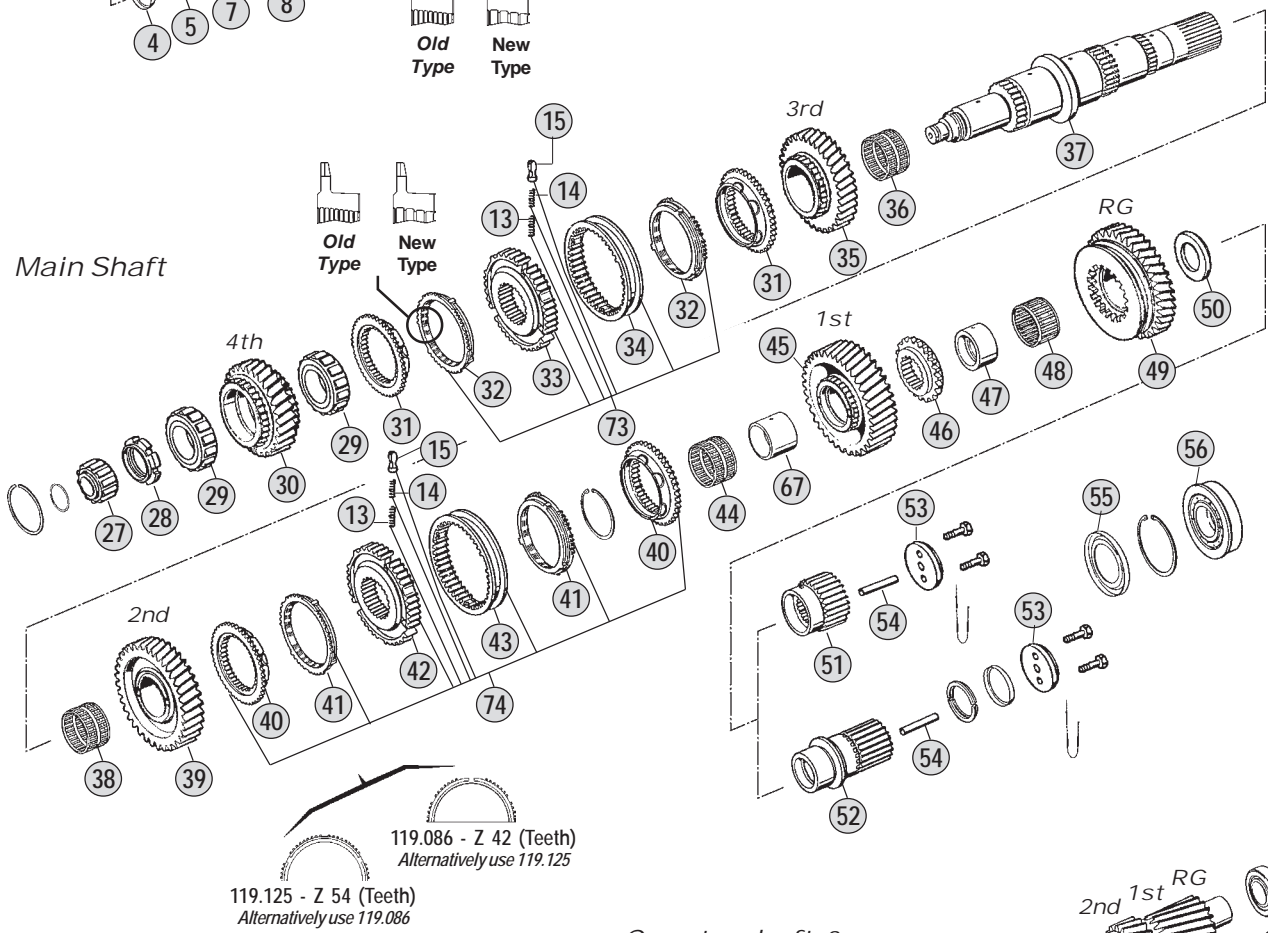
Input Shaft



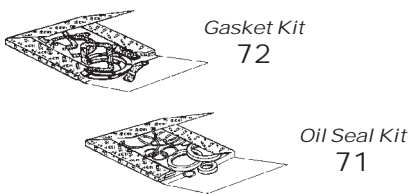
Springs & Slides Kits

x 3	x 6	x 9
x 3	x 6	x 9
x 3	x 6	x 9
Kit 68	Kit 69	Kit 70

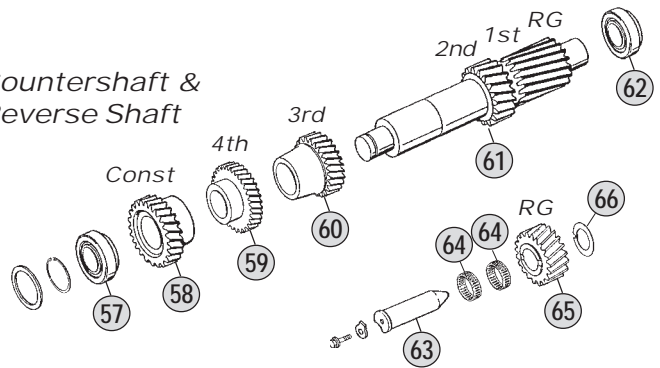
Main Shaft



Kits



Countershaft & Reverse Shaft



Models

16S130	A:10,14-0,72	B: 11,46 - 0,85	C: 13,68 - 1,00	D: 14,29 - 0,82	E:--
16S160	A:--	B: 11,46 - 0,85	C: 13,68 - 1,00	D: 14,29 - 0,82	E:17,06-1,00



All original equipment manufacturers' numbers, symbols, pictures, models and description used in this catalogue are for reference only, and it is not implied that any part listed is the product of these manufacturers. Tutti i nostri particolari non sono originali ma con essi intercambiabili. I riferimenti originali, le figure, i modelli sono esposti a semplice titolo indicativo. La nostra produzione riporta il nostro marchio.

Fig.	CEI no.	O.E.M. Reference		Description	Q.ty	Note								
		ZF no.	VOLVO no.				16S130	16S160						
1	128.261	1297 302 082	1526687	Front Cover	1	L=190-D=66	●	●						
2	139.754	0734 310 386	1526688	Oil Seal 55x75x8	1		●	●						
3	280.348	1295 202 041	1526685	Oil Pump	1		●	●						
4	169.754	0730 061 816	1526683	Lock Ring	1		●	●						
4	169.755	0730 062 579		Lock Ring S.4,20 mm	1		●	●						
5	269.621	0730 103 244	1526673	Split Ring T.4,30 mm	1	(2)	●	●						
5	269.622	0730 103 935	1526682	Split Ring T.3,80 mm	1	(2)	●	●						
5	269.623	0730 105 156		Split Ring T.4,00 mm	1	(3)	●	●						
5	269.624	0730 105 154		Split Ring T.3,80 mm	1	(3)	●	●						
6	130.305	0750 118 131	1526672	Bearing 80x150x27,50	1		●	●						
7	137.082	0735 320 786	1526694	Needle Cage 88x96x24,50	2		●							
7	137.153	0735 320 896	1662581	Needle Cage 88x96x29	2			●						
8	145.276	1295 302 071	1526693	Constant Gear 28 T	1	AC	●							
8	145.489	1295 302 070		Constant Gear 30 T	1	B	●							
8	145.541	1295 302 122		Constant Gear 29 T	1	D	●							
8	145.466	1297 302 177		Constant Gear 30 T	1	B		●						
8	145.406	1297 302 176	1662513	Constant Gear 28 T	1	C		●						
8	145.405	1297 302 250		Constant Gear 29 T	1	D		●						
8	145.407	1297 302 241		Constant Gear 26 T	1	E		●						
9	109.072	1295 304 278	1527438	Synchronizer Cone	1		●	●						
10	119.084	1295 304 004	1526697	Synchronizer Ring	2	Old Type	●	●						
10	119.175	1304 304 686		Synchronizer Ring	2	New Type	●	●						
11	102.251	1295 202 008	1527331	Input Shaft 57 T	1		●							
11	102.540	1297 202 054	1662583	Input Shaft 57 T	1			●						
11	102.541	1297 202 003		Input Shaft	1			●						
12	171.084	0635 470 012	1526684	Needle D.7x7	1		●	●						
13	156.037	0732 040 385	6635322	Outer Spring De.6x34	3		●	●						
14	156.036	0732 040 386	6635323	Inner Spring De.3x34	3		●	●						
15	160.116	1240 304 278	6635324	Pressure Piece	3		●	●						
16	188.211	0730 062 323		Oil Plug	1		●	●						
17	154.097	1295 304 002	1526696	Sliding Sleeve	1		●	●						
18	109.072	1295 304 278	1527438	Synchronizer Cone	1		●	●						
27	137.081	0750 118 010	1526747	Roller Cage D.30x60x25,50	1		●							
27	137.113	0750 118 038	1662534	Roller Cage 35x68x27,50	1			●						
28	187.412	0737 502 092	1526746	Grooved Nut M60x1,5	1		●	●						
29	137.083	0750 118 005	1526744	Roller Cage 63x97,5x34,80	2		●							
29	137.157	0750 118 220	1662532	Roller Cage D.63x97,5x37,50	2			●						
30	146.212	1295 304 135	1526745	Gear 4th Speed 30 T	1	AC	●							
30	146.356	1295 304 136		Gear 4th Speed 28 T	1	B	●							
30	146.454	1295 304 236		Gear 4th Speed 26 T	1	D	●							
30	146.384	1297 304 267		Gear 4th Speed 28 T	1	B		●						
30	146.318	1297 304 260	1662533	Gear 4th Speed 30 T	1	C		●						
30	146.315	1297 304 318		Gear 4th Speed 26 T	1	D		●						
30	146.294	1297 304 413		Gear 4th Speed 29 T	1	E		●						
31	109.072	1295 304 278	1527438	Synchronizer Cone	2		●	●						

Notes

- (2) To be coupled together with Fig. 4 - 0730 061 816
 (3) To be coupled together with Fig. 4 - 0730 062 579
 (6) Old Type. Old Syncro Ring Ø 175.5 mm (Z 57 or 30)
 Standard Syncro Ring Ø 192 mm (Z 63 or 54)
 Use items marked (6) together

Date

04 / 2012

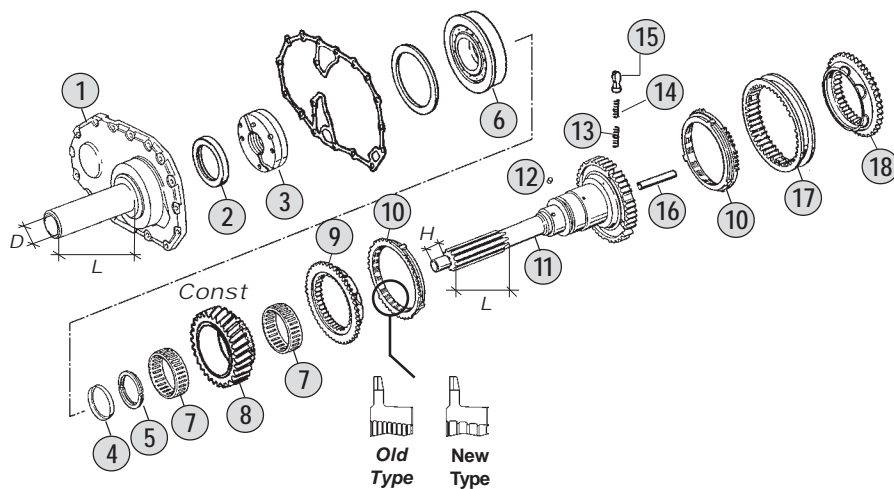
Table

230/A

Adattabile a : **VOLVO**
 Suitable To :

Modelli Cambio/ Gearbox Models
16S130 - 16S160

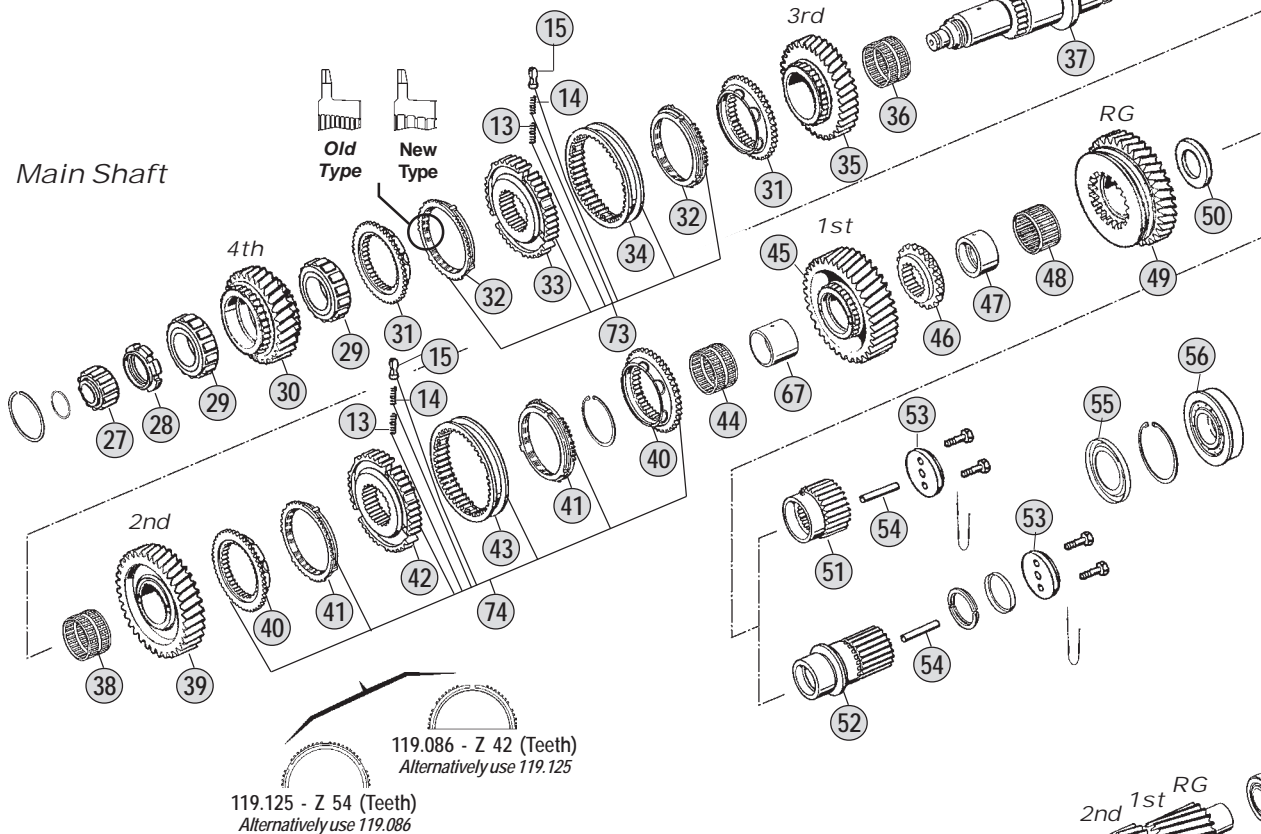
Input Shaft



Springs & Slides Kits

x 3	x 6	x 9
x 3	x 6	x 9
x 3	x 6	x 9
Kit 68	Kit 69	Kit 70

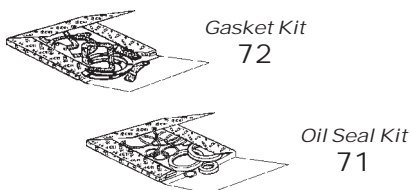
Main Shaft



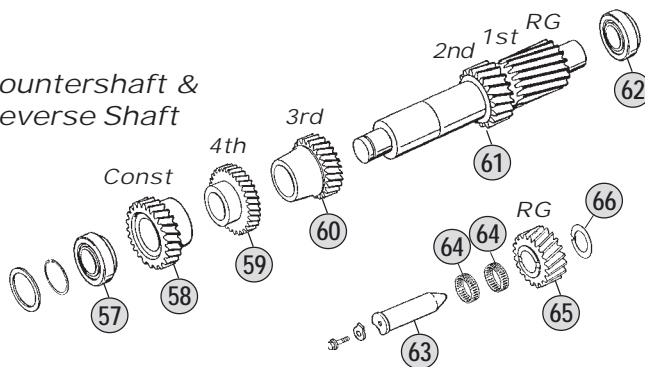
119.086 - Z 42 (Teeth)
 Alternatively use 119.125

119.125 - Z 54 (Teeth)
 Alternatively use 119.086

Kits



Countershaft & Reverse Shaft



Models

16S130	A:10,14-0,72	B: 11,46 - 0,85	C: 13,68 - 1,00	D: 14,29 - 0,82	E:--
16S160	A:--	B: 11,46 - 0,85	C: 13,68 - 1,00	D: 14,29 - 0,82	E:17,06-1,00



All original equipment manufacturers' numbers, symbols, pictures, models and description used in this catalogue are for reference only, and it is not implied that any part listed is the product of these manufacturers. Tutti i nostri particolari non sono originali ma con essi intercambiabili. I riferimenti originali, le figure, i modelli sono esposti a semplice titolo indicativo. La nostra produzione riporta il nostro marchio.

Fig.	CEI no.	O.E.M. Reference		Description	Q.ty	Note							
		ZF no.	VOLVO no.				16S130	16S160					
32	119.084	1295 304 004	1526697	Synchronizer Ring	2	Old Type	●	●					
32	119.175	1304 304 686		Synchronizer Ring	2	New Type	●	●					
33	157.110	1297 304 031	1526733	Synchronizer Hub	1		●	●					
34	154.097	1295 304 002	1526696	Sliding Sleeve	1		●	●					
35	244.163	1295 304 269		Gear 3rd Speed 25 T	1	A	●						
35	145.495	1295 304 127		Gear 3rd Speed 32 T	1	BD	●						
35	145.277	1295 304 128	1526743	Gear 3rd Speed 34 T	1	C	●						
35	145.470	1297 304 266		Gear 3rd Speed 32 T	1	BD		●					
35	145.450	1297 304 261	1662530	Gear 3rd Speed 34 T	1	C		●					
35	145.377	1297 304 414		Gear 3rd Speed 34 T	1	E		●					
36	137.084	0735 320 418	1526731	Needle Cage 82x90x49	1		●						
36	137.112	0735 320 451	1662531	Needle Cage 82x90x60	1			●					
37	103.274	1295 304 273		Main Shaft	1	A	●						
37	103.075	1295 304 245	1527322	Main Shaft	1	BC	●						
37	103.140	1295 304 250		Main Shaft	1	D	●						
37	103.132	1297 304 181	1662519	Main Shaft	1	BC		●					
37	103.098	1297 304 193		Main Shaft	1	DE		●					
38	137.112	0735 320 451	1662531	Needle Cage 82x90x60	1	A	●						
38	137.084	0735 320 418	1526731	Needle Cage 82x90x49	1	BCD	●						
38	137.109	0735 320 452	1662520	Needle Cage 82x90x55	1			●					
39	244.164	1295 304 271		Gear 2nd Speed 34 T	1	A	●						
39	145.501	1295 304 120		Gear 2nd Speed 37 T	1	BD	●						
39	145.278	1295 304 121	1526732	Gear 2nd Speed 38 T	1	C	●						
39	145.500	1297 304 269		Gear 2nd Speed 37 T	1	BD		●					
39	145.375	1297 304 442	1662521	Gear 2nd Speed 38 T	1	CE		●					
40	109.074	1297 304 196	6889868	Synchronizer Cone	2		●	●					
40	109.072	1295 304 278	1527438	Synchronizer Cone	2	(6)	●						
41	119.125	1296 304 135	6889866	Synchronizer Ring	2	Z 54-Alt.use 119.086	●	●					
41	119.086	1246 304 278		Synchronizer Ring	2	Z 42-Alt.use 119.125	●	●					
41	119.084	1295 304 004	1526697	Synchronizer Ring	2	(6)	●						
42	157.111	1297 304 195	6889865	Synchronizer Hub	1		●	●					
42	157.110	1297 304 031	1526733	Synchronizer Hub	1	(6)	●						
43	154.051	1257 304 020	6857262	Sliding Sleeve	1		●	●					
43	154.097	1295 304 002	1526696	Sliding Sleeve	1	(6)	●						
44	137.159	0735 320 548		Needle Cage 70x78x46	1	A	●						
44	137.085	0735 320 496	1526736	Needle Cage 70x78x55	1	BCD	●						
44	137.110	0735 320 487	1662523	Needle Cage 82x90x68	1			●					
45	244.165	1295 304 270		Gear 1st Speed 41 T	1	A	●						
45	145.506	1295 304 203		Gear 1st Speed 44 T	1	BD	●						
45	145.279	1295 304 202	1527332	Gear 1st Speed 47 T	1	C	●						
45	145.507	1297 304 270		Gear 1st Speed 44 T	1	BD		●					
45	145.376	1297 304 441	1662524	Gear 1st Speed 47 T	1	CE		●					
46	109.184	1295 304 024	1526738	Synchronizer Cone	1	A	●						
46	109.075	1295 304 206	1527323	Synchronizer Cone	1	BCD	●						
46	109.178	1297 304 154	1662525	Synchronizer Cone	1			●					

Notes

- (2) To be coupled together with Fig. 4 - 0730 061 816
 (3) To be coupled together with Fig. 4 - 0730 062 579
 (6) Old Type. Old Syncro Ring Ø 175.5 mm (Z 57 or 30)
 Standard Syncro Ring Ø 192 mm (Z 63 or 54)
 Use items marked (6) together

Date

04 / 2012

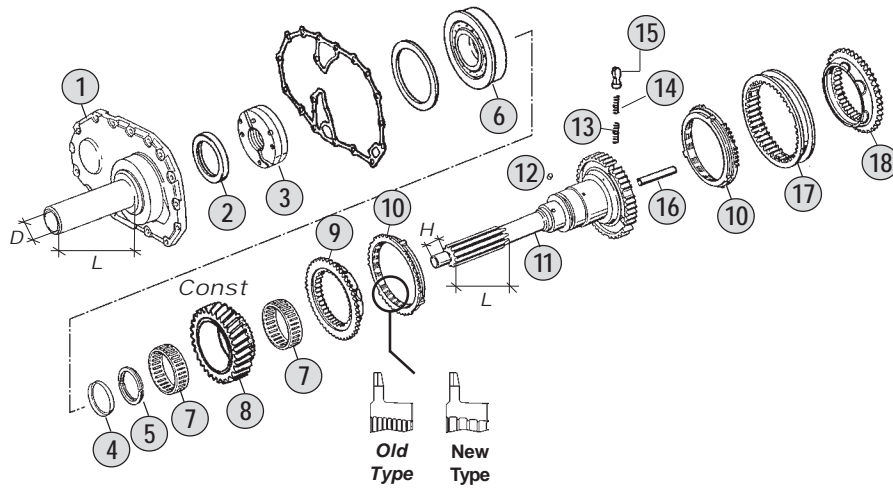
Table

230/A

Adattabile a : **VOLVO**
 Suitable To :

Modelli Cambio/ Gearbox Models
16S130 - 16S160

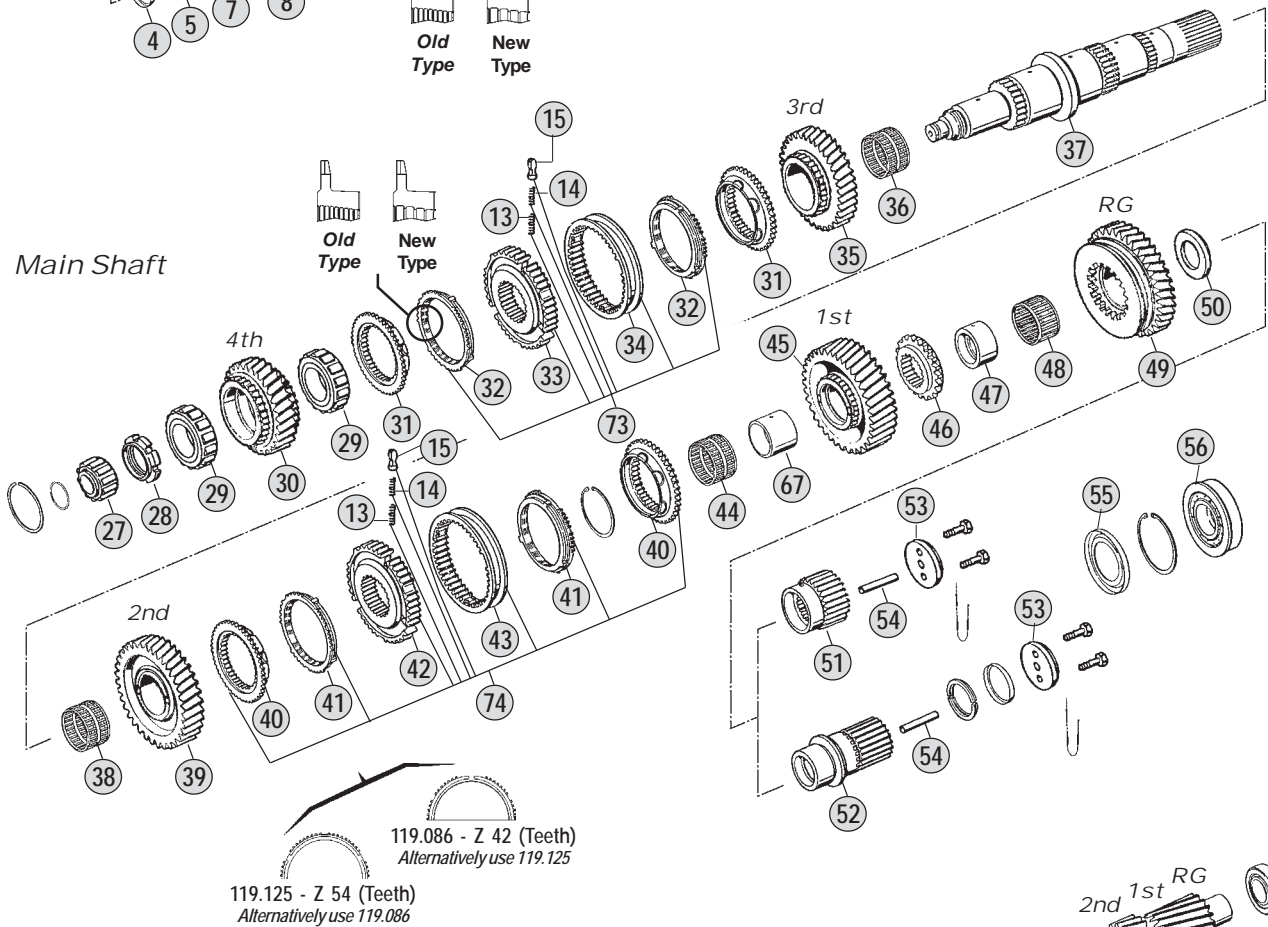
Input Shaft



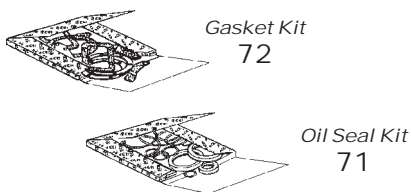
Springs & Slides Kits

x 3	x 6	x 9
x 3	x 6	x 9
x 3	x 6	x 9
Kit 68	Kit 69	Kit 70

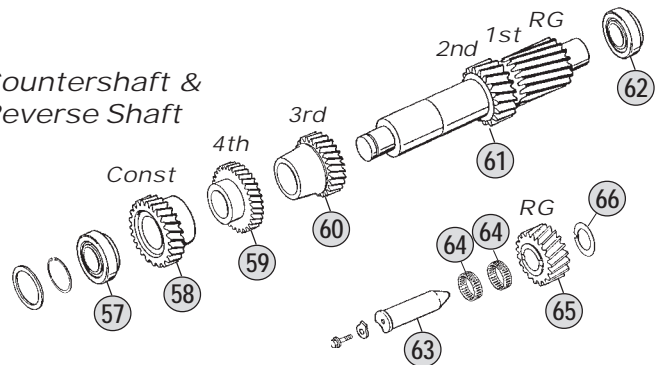
Main Shaft



Kits



Countershaft & Reverse Shaft



Models

16S130	A:10,14-0,72	B: 11,46 - 0,85	C: 13,68 - 1,00	D: 14,29 - 0,82	E:--
16S160	A:--	B: 11,46 - 0,85	C: 13,68 - 1,00	D: 14,29 - 0,82	E:17,06-1,00



All original equipment manufacturers' numbers, symbols, pictures, models and description used in this catalogue are for reference only, and it is not implied that any part listed is the product of these manufacturers. Tutti i nostri particolari non sono originali ma con essi intercambiabili. I riferimenti originali, le figure, i modelli sono esposti a semplice titolo indicativo. La nostra produzione riporta il nostro marchio.

Fig.	CEI no.	O.E.M. Reference		Description	Q.ty	Note							
		ZF no.	VOLVO no.				16S130	16S160					
47	117.203	1295 304 012	1526739	Bush D.60x75x38	1	ABC	●						
47	117.318	1297 304 034	1662526	Bush	1	BC		●					
48	137.086	0750 115 059	1526740	Needle Cage 75x83x40	1		●						
48	137.111	0735 320 486	1662527	Needle Cage 78x86x44	1			●					
49	147.292	1295 304 272		Reverse Gear 39 T	1	A	●						
49	147.138	1295 304 201		Reverse Gear 39 T	1	BD	●						
49	147.093	1295 304 200	1527434	Reverse Gear 38 T	1	C	●						
49	147.109	1297 304 149		Reverse Gear 39 T	1	BD		●					
49	147.140	1297 304 148	1662528	Reverse Gear 38 T	1	CE		●					
50	169.409	1295 304 240	1527324	Thrust Washer	1	ABC	●						
50	169.757	1297 304 381	1662529	Thrust Washer	1	BC		●					
51	157.112	1295 304 248	1527334	Sun Gear 27 T	1	ABC	●						
51	157.177	1297 304 187	1662539	Sun Gear 27 T	1	BC		●					
52	157.207	1295 304 251		Sun Gear 24 T	1	D	●						
52	157.198	1297 304 439		Sun Gear 24 T	1	DE		●					
53	188.076	1272 304 021	1527325	Stop Washer	1		●	●					
54	189.671	0730 061 842	1526762	Oil Tube	1		●	●					
55	139.922	1295 304 129	1526665	Oil Collector	1	ABC	●						
55	139.923	1297 301 004	1662580	Oil Collector	1	D	●						
55	139.923	1297 301 004	1662580	Oil Collector	1			●					
56	130.240	0750 118 153	1526658	Bearing 60x130x31	1	ABC	●						
56	130.934	0750 118 137		Bearing 80x140x26	1	D	●						
56	130.702	0750 118 006	1662502	Bearing 65x140x33	1	BC		●					
56	130.703	0750 118 180		Bearing 80x140x33	1	DE		●					
57	130.242	0750 117 010	1526724	Bearing 50,80x100x35	1		●	●					
58	146.210	1295 303 101	1526729	Constant Gear 34 T	1	AC	●						
58	146.354	1295 303 036		Constant Gear 31 T	1	B	●						
58	146.457	1295 303 060		Constant Gear 32 T	1	D	●						
58	146.383	1297 303 074		Constant Gear 31 T	1	B		●					
58	146.322	1297 303 066	1662517	Constant Gear 34 T	1	C		●					
58	146.319	1297 303 098		Constant Gear 32 T	1	D		●					
58	146.321	1297 303 086		Constant Gear 35 T	1	E		●					
59	146.209	1295 303 027	1526728	Gear 4th Speed 31 T	1	AC	●						
59	146.413	1295 303 028		Gear 4th Speed 34 T	1	B	●						
59	146.461	1295 303 094		Gear 4th Speed 35 T	1	D	●						
59	146.382	1297 303 072		Gear 4th Speed 34 T	1	B		●					
59	146.381	1297 303 065	1662518	Gear 4th Speed 31 T	1	C		●					
59	146.415	1297 303 097		Gear 4th Speed 35 T	1	D		●					
59	146.416	1297 303 123		Gear 4th Speed 32 T	1	E		●					
60	146.751	1295 303 071		Gear 3rd Speed 36 T	1	A	●						
60	146.355	1295 303 025		Gear 3rd Speed 28 T	1	BD	●						
60	146.211	1295 303 026	1526727	Gear 3rd Speed 25 T	1	C	●						
60	146.357	1297 303 073		Gear 3rd Speed 28 T	1	BD		●					
60	146.421	1297 303 067	1662516	Gear 3rd Speed 25 T	1	C		●					
60	146.422	1297 303 132		Gear 3rd Speed 26 T	1	E		●					

Notes

- (2) To be coupled together with Fig. 4 - 0730 061 816
 (3) To be coupled together with Fig. 4 - 0730 062 579
 (6) Old Type. Old Syncro Ring Ø 175.5 mm (Z 57 or 30)
 Standard Syncro Ring Ø 192 mm (Z 63 or 54)
 Use items marked (6) together

Date

04 / 2012

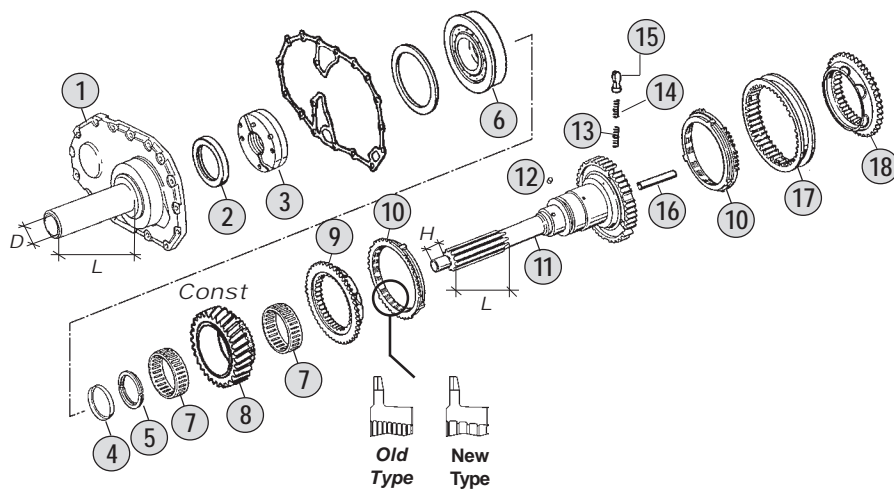
Table

230/A

Adattabile a : **VOLVO**
 Suitable To :

Modelli Cambio/ Gearbox Models
16S130 - 16S160

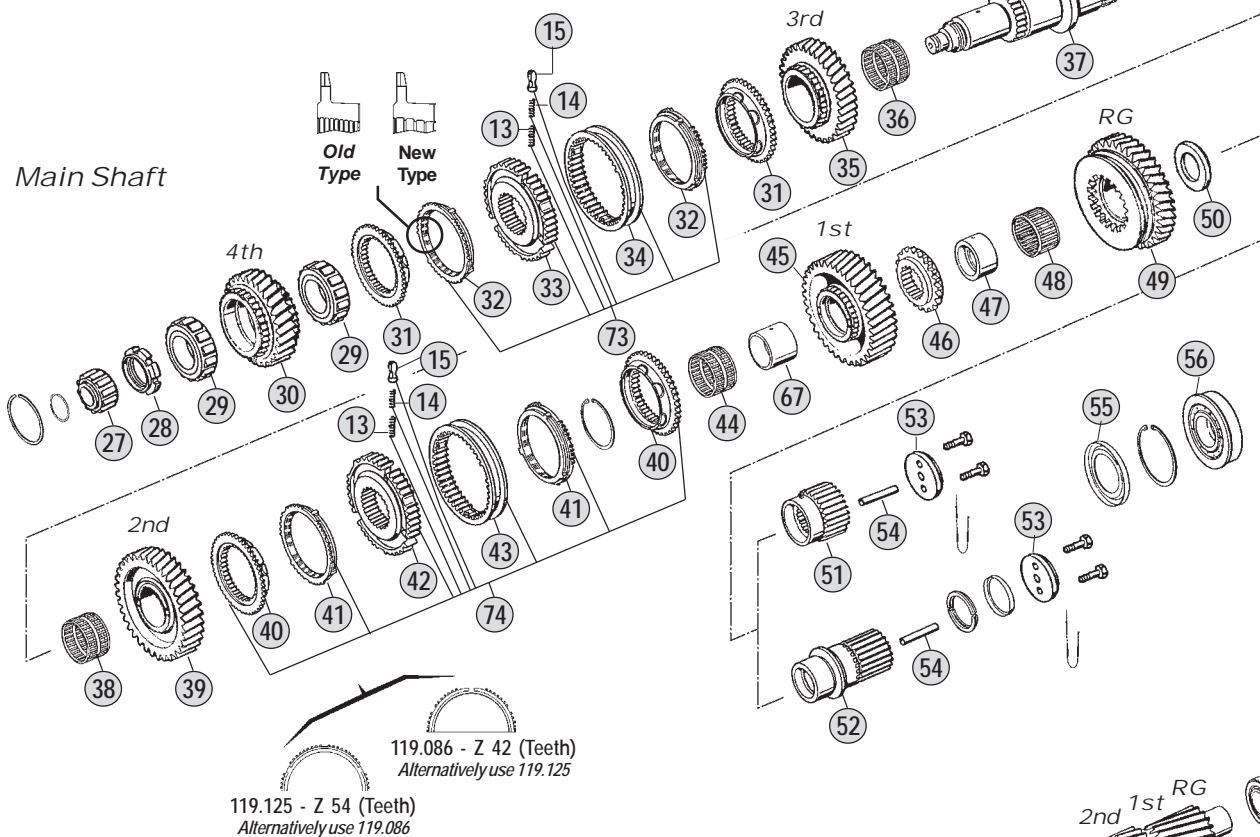
Input Shaft



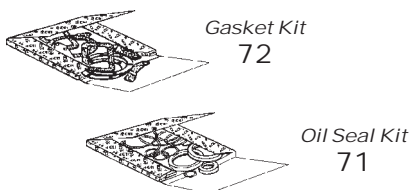
Springs & Slides Kits

x 3	x 6	x 9
x 3	x 6	x 9
x 3	x 6	x 9
Kit 68	Kit 69	Kit 70

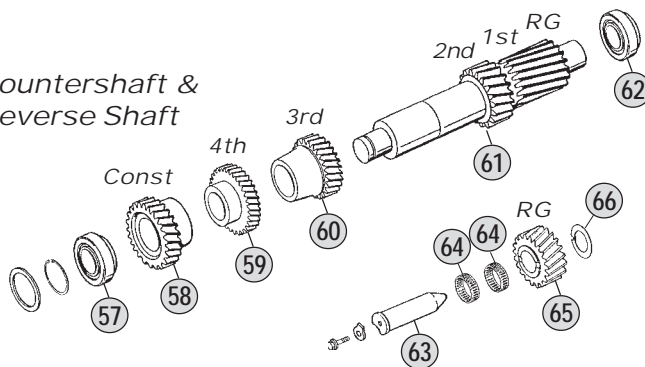
Main Shaft



Kits



Countershaft & Reverse Shaft



Models

16S130	A:10,14-0,72	B: 11,46 - 0,85	C: 13,68 - 1,00	D: 14,29 - 0,82	E:--
16S160	A:--	B: 11,46 - 0,85	C: 13,68 - 1,00	D: 14,29 - 0,82	E:17,06-1,00



All original equipment manufacturers' numbers, symbols, pictures, models and description used in this catalogue are for reference only, and it is not implied that any part listed is the product of these manufactures. Tutti i nostri particolari non sono originali ma con essi intercambiabili. I riferimenti originali, le figure, i modelli sono esposti a semplice titolo indicativo. La nostra produzione riporta il nostro marchio.

Fig.	CEI no.	O.E.M. Reference		Description	Q.ty	Note								
		ZF no.	VOLVO no.				16S130	16S160						
61	105.278	1295 303 072		Countershaft	1	A	●							
61	105.119	1295 303 067		Countershaft 19/23 T	1	BD	●							
61	105.060	1295 303 066	1527344	Countershaft 17/20 T	1	C	●							
61	105.092	1297 303 075		Countershaft 19/23 T	1	BD		●						
61	105.093	1297 303 140	1662514	Countershaft 17/20 T	1	CE		●						
62	130.243	0750 117 008	11062	Bearing 50x110x42	1		●							
62	130.308	0750 117 009	1662515	Bearing 49,2x103,1x43,6	1			●						
63	107.108	1295 305 056	1662509	Reverse Gear Pin	1		●	●						
64	137.007	0750 115 011	1526667	Needle Cage 45x53x21	2		●	●						
65	147.153	1297 305 003		Reverse Gear 21 T	1	A	●							
65	147.133	1295 305 051		Reverse Gear 21 T	1	BD	●							
65	147.094	1295 305 052	1527321	Reverse Gear 24 T	1	C	●							
65	147.133	1295 305 051		Reverse Gear 21 T	1	BD		●						
65	147.094	1295 305 052	1527321	Reverse Gear 24 T	1	CE		●						
66	169.234	0730 150 064	6635283	Thrust Washer	1		●	●						
67	117.246	1297 304 035	1662522	Inner Bush	1			●						
68	198.339	1268 298 938		Spring Slide Set	1		●	●						
69	198.564	CEI 198564		Spring Slide Set	1		●	●						
70	198.842	1295 298 933	CEI 198842	Spring Slide Set	1		●	●						
71	198.428	1295 298 960	CEI 198428	Oil Seal Ring Kit	1		●	●						
72	198.427	1295 298 915	CEI 198427	Gasket Kit	1		●	●						
73	198.807	1297 298 958		Synchron.Kit 3rd-4th Speed	1		●	●						
74	198.809	1297 298 956		Synchron.kit 1st-2nd Speed	1		●	●						

Notes

- (2) To be coupled together with Fig. 4 - 0730 061 816
(3) To be coupled together with Fig. 4 - 0730 062 579
(6) Old Type. Old Syncro Ring Ø 175.5 mm (Z 57 or 30)
Standard Syncro Ring Ø 192 mm (Z 63 or 54)
Use items marked (6) together

Date

04 / 2012

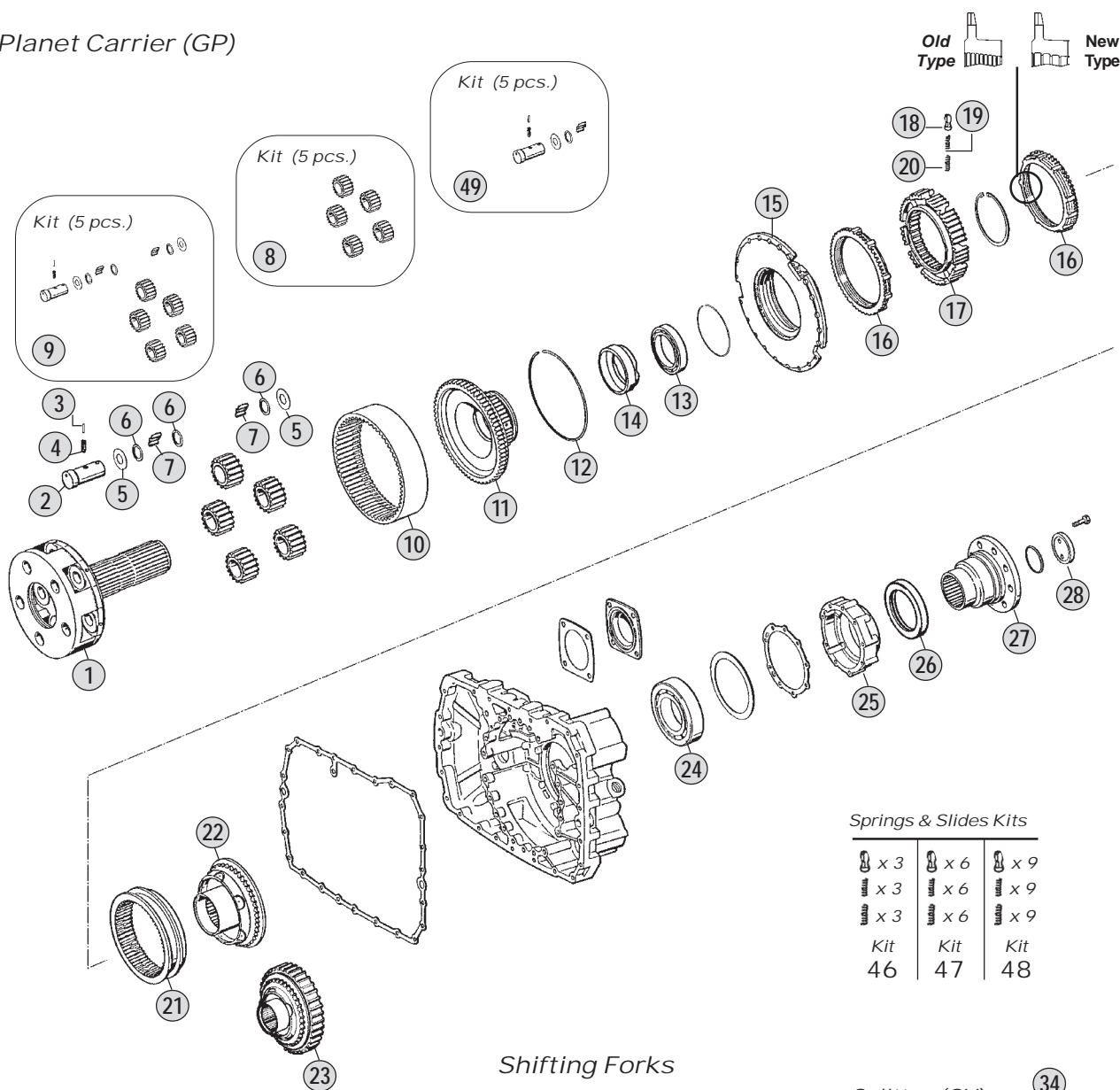
Table

230/A

Adattabile a : **VOLVO**
 Suitable To :

Modelli Cambio/ Gearbox Models
16S130 - 16S160

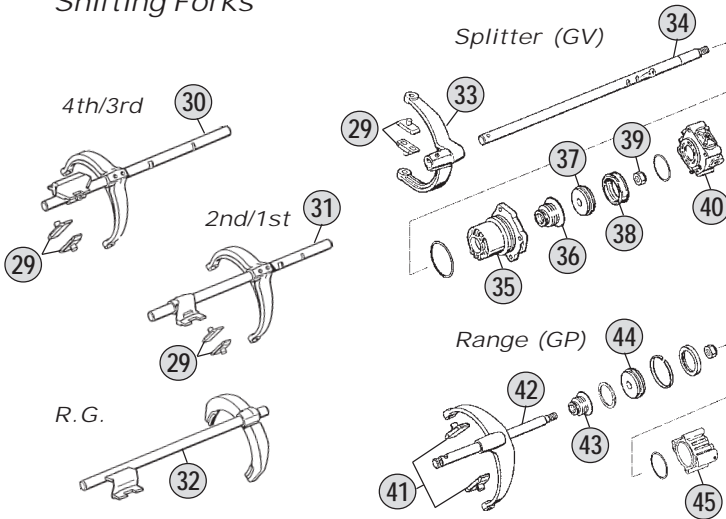
Planet Carrier (GP)



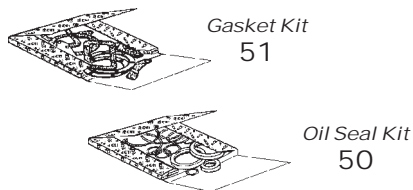
Springs & Slides Kits

x 3	x 6	x 9
x 3	x 6	x 9
x 3	x 6	x 9
Kit 46	Kit 47	Kit 48

Shifting Forks



Kits



Models

16S130	A:10,14-0,72	B: 11,46 - 0,85	C: 13,68 - 1,00	D: 14,29 - 0,82	E:--
16S160	A:--	B: 11,46 - 0,85	C: 13,68 - 1,00	D: 14,29 - 0,82	E:17,06-1,00

Fig.	CEI no.	O.E.M. Reference		Description	Q.ty	Note							
		ZF no.	VOLVO no.				16S130	16S160					
1	190.169	1295 232 044	1699046	Planetary Carrier	1	ABC	●						
1	190.395	1297 232 045		Planetary Carrier	1	D	●						
1	190.396	1297 232 039	1662584	Planetary Carrier	1	BC		●					
1	190.395	1297 232 045		Planetary Carrier	1	DE		●					
2	107.089	1269 332 036	1526836	Planetary Pin	5	ABC	●						
2	107.163	1297 332 109	1662558	Planet Shaft	5	D	●						
2	107.163	1297 332 109	1662558	Planet Shaft	5			●					
3	160.191	0631 329 017	1699048	Lock Pin 3x24	5		●	●					
4	160.192	0631 329 050	1699047	Lock Pin 5x24	5		●	●					
5	169.408	0501 305 887	1526834	Thrust Washer D.29x57,5x1,5	10	ABC	●						
5	169.753	0501 306 212	1662556	Thrust Washer 29x64x1,5	10	D	●						
5	169.753	0501 306 212	1662556	Thrust Washer 29x64x1,5	10			●					
6	169.410	0730 103 846	1526833	Spacer Ring 29x39x1,00	15		●	●					
7	171.016	0735 470 057	1526835	Roller D.6x14,75 (180 pcs)	180	ABC	●						
7	171.045	0750 119 143	1662557	Needle D.10x16,80	120	D	●						
7	171.045	0750 119 143	1662557	Needle D.10x16,80	120			●					
8	198.357	1295 232 027	1527358	Planetary Gear Set (5 pcs)	1	ABC	●						
8	198.810	1297 232 024		Planetary Gear Set (5 pcs)	1	D	●						
8	198.803	1297 232 023	1662555	Planetary Gear Set (5 pcs)	1	BC		●					
8	198.810	1297 232 024		Planetary Gear Set (5 pcs)	1	DE		●					
9	198.562	1296 298 904		Planetary Gear Set	1	ABC	●						
9	198.704	1297 298 912		Planetary Gear Set	1	BC		●					
9	298.807	1297 298 919		Planetary Gear Set	1	DE		●					
10	123.162	1295 332 053	1526844	Crown Gear 83 T	1	ABC	●						
10	123.208	1295 332 086		Crown Gear 86 T	1	D	●						
10	123.217	1297 332 080	1662568	Crown Gear 83 T	1	BC		●					
10	123.208	1295 332 086		Crown Gear 86 T	1	DE		●					
11	150.112	1295 332 021	1526837	Flange Gear 83 T	1	ABC	●						
11	150.137	1297 332 035		Carrier Hub 86 T	1	D	●						
11	150.138	1297 332 017	1662559	Carrier Hub 83 T	1	BC		●					
11	150.137	1297 332 035		Carrier Hub 86 T	1	DE		●					
12	111.129	0730 505 055	1526845	Locking Wire	1	ABC	●						
12	111.198	0730 505 056		Locking Wire	1	D	●						
12	111.129	0730 505 055	1526845	Locking Wire	1	BC		●					
12	111.198	0730 505 056		Locking Wire	1	DE		●					
13	130.244	0750 116 166	1526874	Bearing 75x105x16	1	ABC	●						
13	130.310	0750 116 165	1662561	Bearing 80x110x16	1	D	●						
13	130.310	0750 116 165	1662561	Bearing 80x110x16	1			●					
14	119.255	1297 332 122	1662560	Intermediate Ring	1	D	●						
14	119.255	1297 332 122	1662560	Intermediate Ring	1			●					
15	198.358	1296 233 006	1527360	Synchronizer Cone	1		●	●					
16	119.085	1296 333 022		Synchronizer Ring	2	Old Type	●	●					
16	119.172	1296 333 045	1527458	Synchronizer Ring	2	New Type	●	●					
17	157.113	1296 333 002	1526457	Synchronizer Hub	1		●	●					
18	160.116	1240 304 278	6635324	Pressure Piece	9		●	●					

Notes

Date

04 / 2012

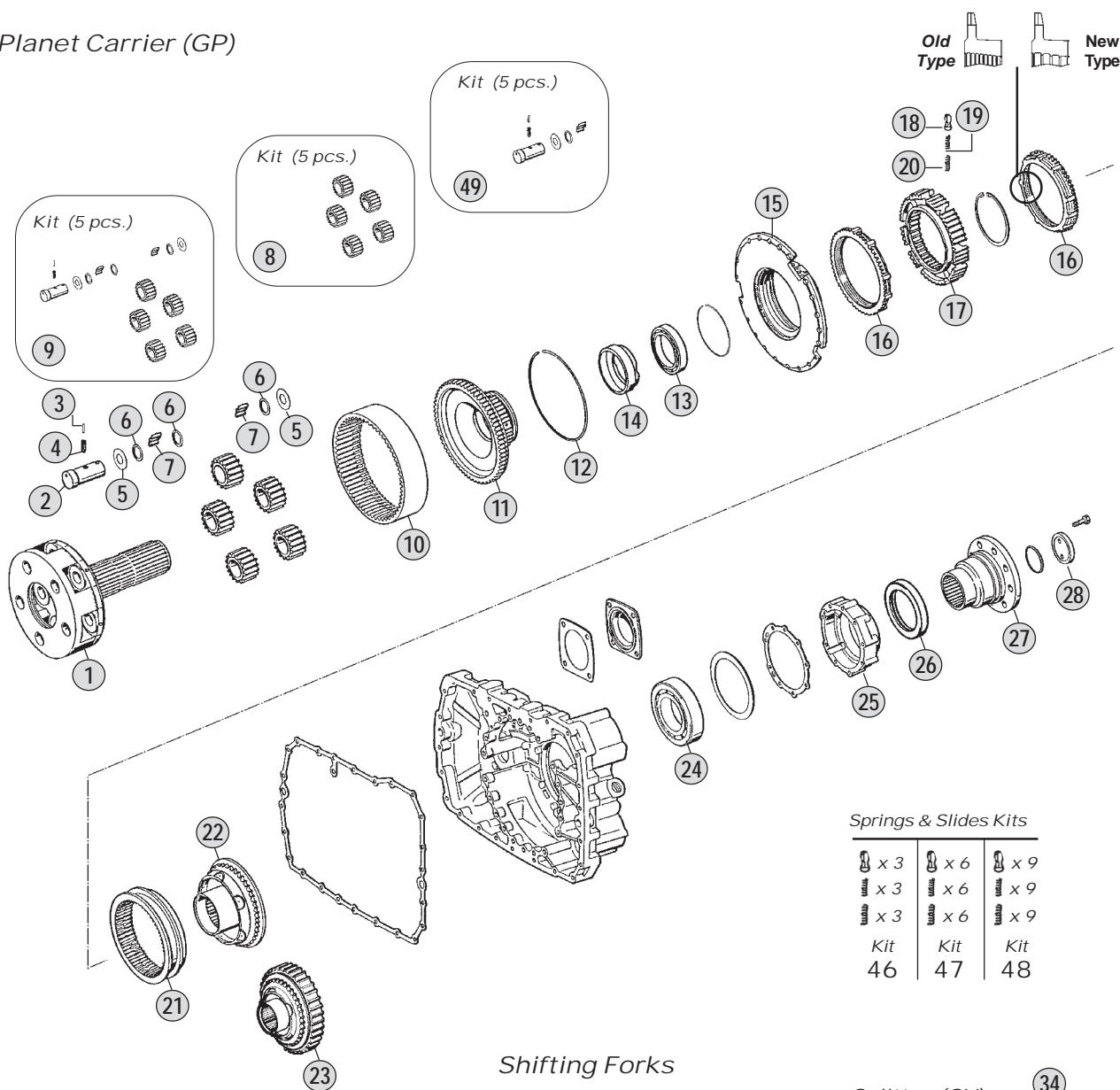
Table

230/B

Adattabile a : **VOLVO**
 Suitable To :

Modelli Cambio/ Gearbox Models
16S130 - 16S160

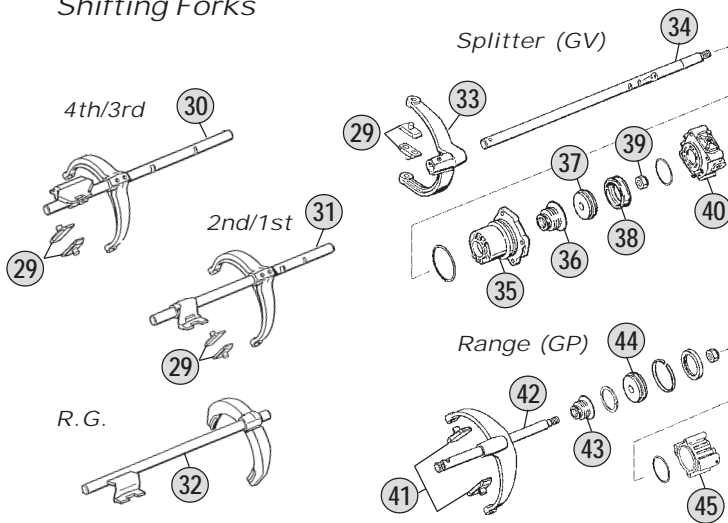
Planet Carrier (GP)



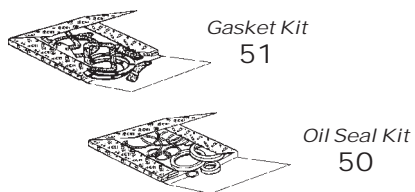
Springs & Slides Kits

x 3	x 6	x 9
x 3	x 6	x 9
x 3	x 6	x 9
Kit 46	Kit 47	Kit 48

Shifting Forks



Kits



Models

16S130	A:10,14-0,72	B: 11,46 - 0,85	C: 13,68 - 1,00	D: 14,29 - 0,82	E:--
16S160	A:--	B: 11,46 - 0,85	C: 13,68 - 1,00	D: 14,29 - 0,82	E:17,06-1,00

Fig.	CEI no.	O.E.M. Reference		Description	Q.ty	Note								
		ZF no.	VOLVO no.				16S130	16S160						
19	156.036	0732 040 386	6635323	Inner Spring De.3x34	9		●	●						
20	156.037	0732 040 385	6635322	Outer Spring De.6x34	9		●	●						
21	154.098	1296 333 023	1527459	Sliding Sleeve	1		●	●						
22	198.359	1295 233 025	6885660	Synchronizer Cone (36 Spl.)	1	ABC	●							
22	198.374	1313 233 001	1662575	Synchronizer Cone (38 Spl.)	1	D	●							
22	198.374	1313 233 001	1662575	Synchronizer Cone (38 Spl.)	1			●						
23	109.845	1297 333 117		Synchronizer Cone	1	With Retarder ABC	●							
23	109.772	1297 333 118		Synchronizer Cone	1	With Retarder D	●							
23	109.772	1297 333 118		Synchronizer Cone	1	With Retarder		●						
24	130.245	0750 116 394	19499	Bearing D.90x160x30	1		●	●						
25	128.260	1296 301 067	1526826	Cover	1		●	●						
25	128.098	1315 301 220	1662553	Cover	1		●	●						
26	139.878	0750 111 341	1526828	Oil Seal 105x130x12	1		●	●						
27	197.235	1295 238 003		Output Flange D.165	1	ABC	●							
27	197.161	1295 338 061		Output Flange D.180	1	ABC	●							
27	197.051	1295 338 014		Output Flange D.180	1	ABC	●							
27	197.168	1295 338 059		Output Flange D.180	1	ABC	●							
27	197.074	1295 338 016		Output Flange D.204	1	ABC	●							
27	197.234	1295 338 028	6885664	Output Flange D.204	1	ABC	●							
27	197.167	1297 338 041		Output Flange D.180	1	D	●							
27	197.162	1297 338 010	1672060	Output Flange D.180	1	D	●							
27	197.167	1297 338 041		Output Flange D.180	1			●						
27	197.163	1297 338 038		Output Flange D.180	1			●						
27	197.162	1297 338 010	1672060	Output Flange D.180	1			●						
28	188.077	1295 332 051	6889862	Stop Washer	1		●	●						
28	188.250	1295 332 064		Stop Washer	1	Only with 1295 238 003	●							
29	141.068	1295 306 132	1662543	Bronze Slide	2		●	●						
30	298.811	1295 206 219		Complete Fork	1		●							
30	298.812	1295 206 212		Complete Fork	1		●							
30	198.362	1295 206 213	1527378	Complete Fork	1		●							
30	298.813	1297 206 103		Complete Fork	1			●						
30	298.814	1297 206 104	1662542	Complete Fork	1			●						
31	298.815	1295 206 223		Complete Fork	1		●							
31	298.816	1295 206 217		Complete Fork	1		●							
31	298.817	1295 206 214	6889867	Complete Fork	1		●							
31	298.818	1295 206 215		Complete Fork	1		●							
31	298.819	1297 206 106		Complete Fork	1			●						
31	298.820	1297 206 105	1662541	Complete Fork	1			●						
32	298.821	1295 206 250		Complete Fork	1		●							
32	298.822	1295 206 249		Complete Fork	1		●							
32	198.360	1295 206 255	1527379	Complete Fork	1		●							
32	298.823	1295 206 254		Complete Fork	1		●							
32	298.824	1297 206 174		Complete Fork	1			●						
32	298.825	1297 206 175		Complete Fork	1			●						
33	141.086	1313 312 002	1662550	Shift Yoke	1		●	●						

Notes

Date

04 / 2012

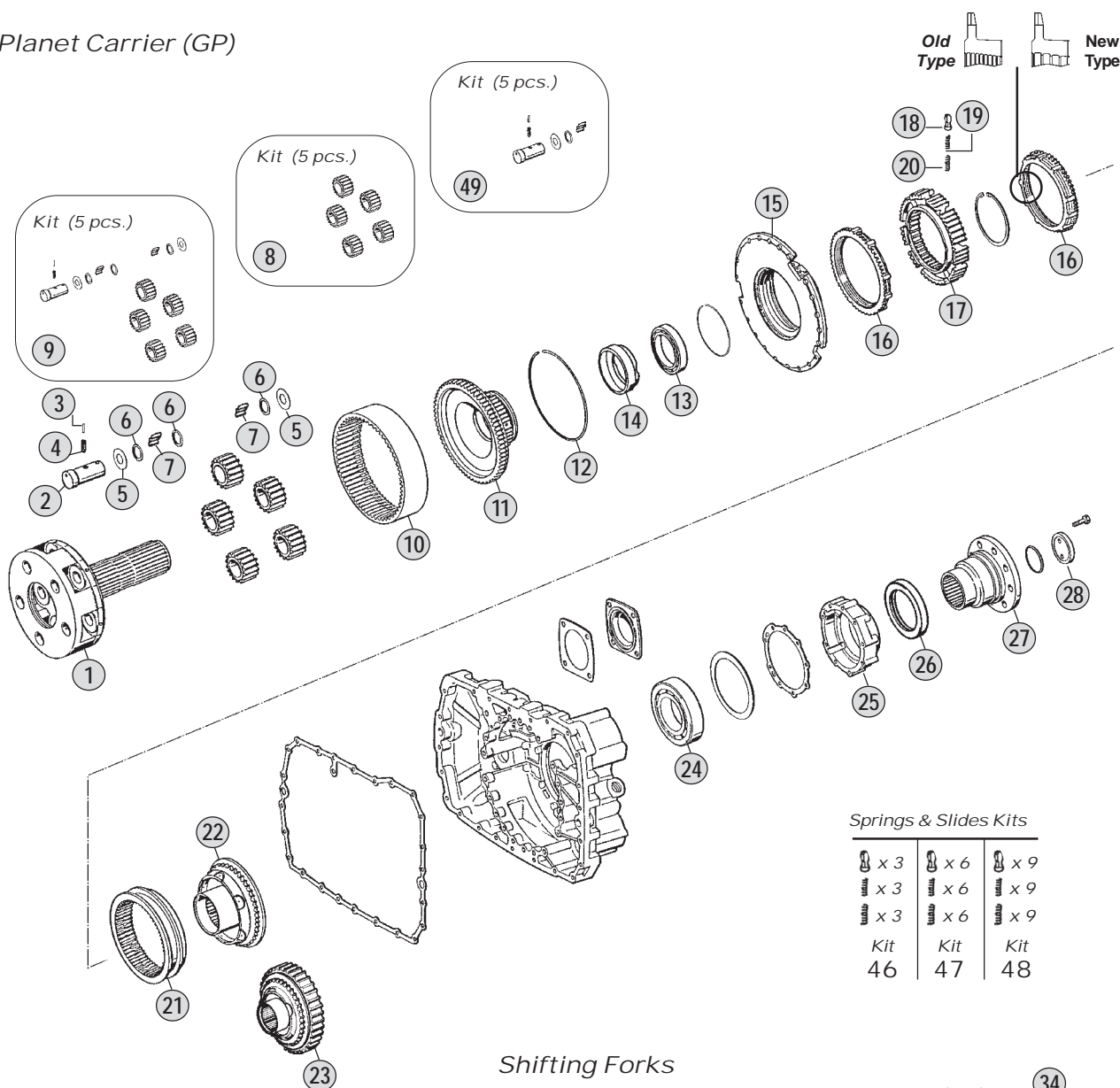
Table

230/B

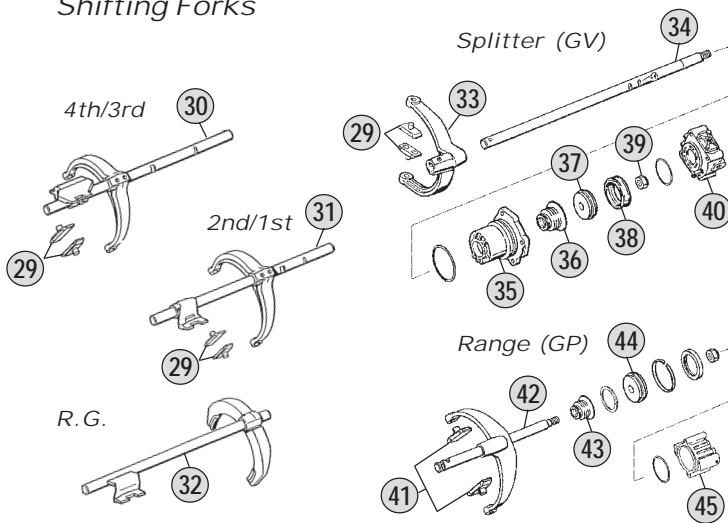
Adattabile a : **VOLVO**
 Suitable To :

Modelli Cambio/ Gearbox Models
16S130 - 16S160

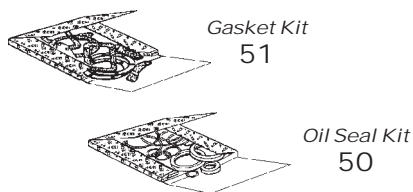
Planet Carrier (GP)



Shifting Forks



Kits



Models

16S130	A:10,14-0,72	B: 11,46 - 0,85	C: 13,68 - 1,00	D: 14,29 - 0,82	E:--
16S160	A:--	B: 11,46 - 0,85	C: 13,68 - 1,00	D: 14,29 - 0,82	E:17,06-1,00

Fig.	CEI no.	O.E.M. Reference		Description	Q.ty	Note								
		ZF no.	VOLVO no.				16S130	16S160						
34	149.172	1295 312 018	1526820	Selector Rod	1		●							
34	149.268	1297 312 008	1662549	Selector Rod	1			●						
35	132.046	1296 312 042	1526816	Cylinder	1		●	●						
36	139.331	0750 112 034	1526817	Cap Collar 25x38x14,2	1		●	●						
37	189.421	1296 312 053	1526818	Piston	1		●	●						
38	139.912	0750 112 089	1527355	Ring 53x63x16,2	1		●	●						
39	287.091	0737 300 037		Nut	1		●	●						
40	132.084	0750 132 032	1662551	Cylinder	1		●	●						
40	132.085	0750 132 033		Cylinder	1		●	●						
40	280.350	1295 212 008		Cylinder	1		●	●						
40	132.086	1295 212 009	1527454	Cylinder	1			●						
41	141.085	1296 334 004	1526864	Bronze Slide	2		●	●						
42	149.171	1312 234 002	1662403	Fork Lever	1		●	●						
43	139.331	0750 112 034	1526817	Cap Collar 25x38x14,2	1		●	●						
44	189.422	1296 334 039	1527462	Piston	1		●	●						
45	132.047	0750 132 027	1527363	Cylinder	1		●	●						
46	198.339	1268 298 938		Spring Slide Set	1		●	●						
47	198.564	CEI 198564		Spring Slide Set	1		●	●						
48	198.842	1295 298 933	CEI 198842	Spring Slide Set	1		●	●						
49	198.447	CEI 198447		Overhaul Planetary Gear Kit	1	ABC	●							
50	198.428	1295 298 960	CEI 198428	Oil Seal Ring Kit	1		●	●						
51	198.427	1295 298 915	CEI 198427	Gasket Kit	1		●	●						

Notes

Date

04 / 2012

Table

230/B